

The *Arabidopsis* vitamin E pathway gene5-1 Mutant Reveals a Critical Role for Phytol Kinase in Seed Tocopherol Biosynthesis

Henry E. Valentin,^{a,1,2} Kim Lincoln,^{b,3} Farhad Moshiri,^a Pamela K. Jensen,^c Qungang Qi,^a Tyamagondlu V. Venkatesh,^c Balasulojini Karunanandaa,^c Susan R. Baszis,^a Susan R. Norris,^{b,4} Beth Savidge,^d Kenneth J. Gruys,^{a,2} and Robert L. Last^{b,5}

^a Monsanto Company, Chesterfield, Missouri 63017

^b Cereon Genomics, Cambridge, Massachusetts 02492

^c Monsanto Company, St. Louis, Missouri 63167

^d Monsanto Company, Calgene Campus, Davis, California 95616

We report the identification and characterization of a low tocopherol *Arabidopsis thaliana* mutant, vitamin E pathway gene5-1 (*vte5-1*), with seed tocopherol levels reduced to 20% of the wild type. Map-based identification of the responsible mutation identified a G→A transition, resulting in the introduction of a stop codon in At5g04490, a previously unannotated gene, which we named *VTE5*. Complementation of the mutation with the wild-type transgene largely restored the wild-type tocopherol phenotype. A knockout mutation of the *Synechocystis* sp PCC 6803 *VTE5* homolog *slr1652* reduced *Synechocystis* tocopherol levels by 50% or more. Bioinformatic analysis of *VTE5* and *slr1652* indicated modest similarity to dolichol kinase. Analysis of extracts from *Arabidopsis* and *Synechocystis* mutants revealed increased accumulation of free phytol. Heterologous expression of these genes in *Escherichia coli* supplemented with free phytol and in vitro assays of recombinant protein produced phytolmonophosphate, suggesting that *VTE5* and *slr1652* encode phytol kinases. The phenotype of the *vte5-1* mutant is consistent with the hypothesis that chlorophyll degradation-derived phytol serves as an important intermediate in seed tocopherol synthesis and forces reevaluation of the role of geranylgeranyl diphosphate reductase in tocopherol biosynthesis.

INTRODUCTION

Tocopherols represent a group of important nutrients for animals and humans and are lipophilic antioxidants synthesized by some photosynthetic bacteria and all green plants (for reviews, see Grusak and DellaPenna, 1999; Sattler et al., 2004b). The biopotency of tocopherols for animals and humans is expressed as vitamin E activity (IUPAC-IUP Joint Commission on Biochemical Nomenclature, 1982; Cunniff, 1990). It is believed that the

beneficial effects of tocopherols are derived from their radical scavenging activity in lipophilic environments, resulting in the stabilization of polyunsaturated fatty acids in membrane lipids and oils. Recent studies using *Arabidopsis thaliana* mutants have provided experimental evidence supporting the protective role of tocopherols against oxidative stress (Kanwischer et al., 2005) as well as beneficial effects on seed longevity and germination as a result of lipid stabilization by tocopherols in plants (Sattler et al., 2004a).

While most biochemical reactions leading to tocopherol biosynthesis were identified more than two decades ago (Soll and Schultz, 1980; Soll et al., 1980, 1983, 1985), genes encoding enzymes for tocopherol biosynthesis were identified relatively recently (Shintani and DellaPenna, 1998; Collakova and DellaPenna, 2001; Porfirova et al., 2002; Savidge et al., 2002; Cheng et al., 2003; Rohmer, 2003; Van Eenennaam et al., 2003). Homogentisic acid and phytyldiphosphate (PDP) serve as precursors for tocopherol biosynthesis (Figure 1). In plants, homogentisic acid is formed from Tyr via Tyr transaminase and *p*-hydroxyphenylpyruvate dioxygenase (Norris et al., 1998). PDP for tocopherol biosynthesis is thought to originate from direct reduction of geranylgeranyldiphosphate (GGDP) by geranylgeranyl diphosphate reductase (GGR) (Keller et al., 1998).

Phytol, which constitutes approximately one-third of the mass of chlorophyll, is generally considered to be the most abundant acyclic isoprenoid compound in the biosphere (Volkman and

¹ To whom correspondence should be addressed. E-mail henry.e.valentin@monsanto.com; fax 530-792-2454.

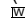
² Current address: Monsanto Company, Calgene Campus, 1920 Fifth Street, Davis, CA 95616.


³ Current address: Millennium Pharmaceuticals, 270 Albany St., Cambridge, MA 02139.

⁴ Current address: Monsanto Company, 700 Chesterfield Parkway West, Chesterfield, MO 63017.

⁵ Current address: Departments of Biochemistry and Molecular Biology and Plant Biology, 301 Biochemistry Building, Michigan State University, East Lansing, MI 48824-1319.

The author responsible for distribution of materials integral to the findings presented in this article in accordance with the policy described in the Instructions for Authors (www.plantcell.org) is: Henry E. Valentin (henry.e.valentin@monsanto.com).

 Online version contains Web-only data.

 Open Access articles can be viewed online without a subscription. Article, publication date, and citation information can be found at www.plantcell.org/cgi/doi/10.1105/tpc.105.037077.

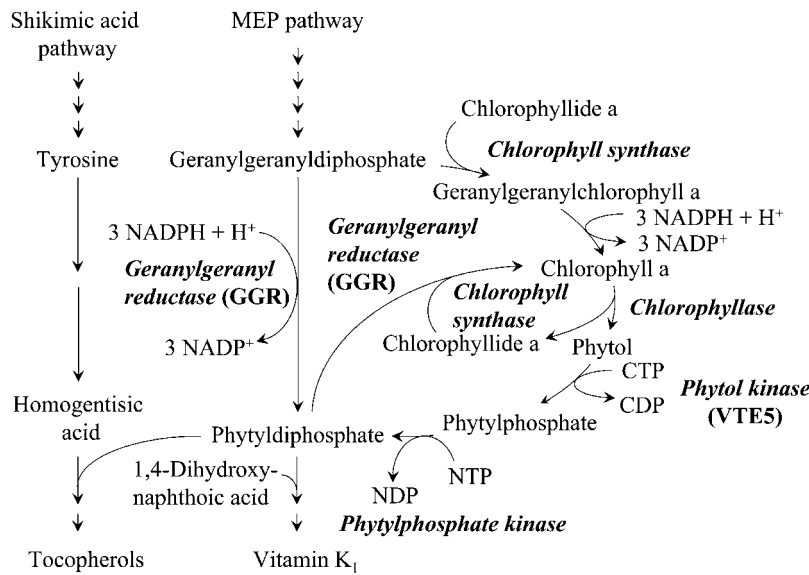


Figure 1. Schematic Drawing of the Tocopherol Biosynthetic Pathway.

The metabolic fate of GGDP is shown in detail. Enzyme designations are shown in italicized bold text. GGDP is proposed either to be directly reduced by GGR to PDP or to serve as substrate for chlorophyll synthase to form geranylgeranyl chlorophyll a. GGR reduces geranylgeranyl chlorophyll a to form chlorophyll a. Hydrolysis of chlorophyll by the action of chlorophyllase releases phytol, which can be reassimilated through two subsequent phosphorylation reactions with phytol kinase (VTE5) catalyzing a CTP-dependent phosphorylation of free phytol. Another enzyme, phytidyldiphosphate kinase, is proposed for the second phosphorylation reaction to obtain PDP. PDP can enter the tocopherol biosynthetic pathway, be utilized for chlorophyll biosynthesis, or enter vitamin K (phylloquinone) biosynthesis. MEP, methylerythritol phosphate pathway.

Maxwell, 1986). Serving as the hydrophobic membrane-anchor of chlorophyll in the photosynthetic membrane, it plays essential roles in the assembly, structure, and function of both plant and microbial photosynthetic reaction centers (Ben-Shem et al., 2003). Phytol is also a constituent of both tocopherols, which collectively comprise vitamin E (Grusak and DellaPenna, 1999; Bramley et al., 2000) and vitamin K (phylloquinone; Shibata et al., 2004) in plants and cyanobacteria.

In photosynthetic organisms, free phytol is generated during chlorophyll catabolism by chlorophyllase (Figure 1). While the subsequent fate of the chlorophyll breakdown product chlorophyllide a and its derived pigments has been well characterized, little is known about the metabolic fate of phytol (for general reviews on chlorophyll catabolism, see Hörtensteiner, 1999; Matile et al., 1999; Kräutler, 2002). Phytol derived from chlorophyll breakdown is reesterified to acetic acid or other fatty acids (Peisker et al., 1989; Patterson et al., 1993), while a portion is also irreversibly destroyed by photodegradation (Rontani et al., 1996). Recycling of catabolized phytol into intermediates of central metabolism has not yet been demonstrated in plants. It has been suggested that chlorophyll-derived phytol may be a precursor for the biosynthesis of tocopherols, based on the temporal patterns of chlorophyll degradation and leaf and seed tocopherol accumulation during leaf senescence (Rise et al., 1989) and seed maturation (Goffman et al., 1999). However, this possibility was suggested as being unlikely by Hörtensteiner (1999) since it would require the activation of phytol by phosphorylation, and no such enzymatic activity had been demonstrated.

An *Arabidopsis* mutant screen for plants with altered seed total tocopherol levels or composition (Van Eenennaam et al., 2003) identified the mutant isolate *low total tocopherol 1 (lt1)*, which accumulates ~20% of the wild-type seed tocopherol levels. In this report, we describe the identification of the gene responsible for this trait, *Arabidopsis* gene locus At5g04490 (<http://arabidopsis.org/servlets/TairObject?id=136046&type=locus>). Data are presented strongly supporting the hypothesis that this gene encodes a chloroplast-targeted membrane-bound enzyme with phytol kinase activity. Homologs of this gene are found in other plants as well as in cyanobacteria, and we demonstrate that *slr1652*, the *Synechocystis* sp PCC 6803 homolog, is essential for normal tocopherol accumulation in vivo and that At5g04490 and *slr1652* proteins have phytol kinase activity. On the basis of these results, we rename the *Arabidopsis* gene *vitamin E pathway gene5 (VTE5)*. These findings identify an enzymatic pathway for the activation and reutilization of phytol from chlorophyll degradation in plant metabolism, including tocopherol biosynthesis.

RESULTS

Isolation and Identification of an *Arabidopsis* Low Tocopherol Mutant

A screen for mutants with altered seed tocopherols (Van Eenennaam et al., 2003) revealed four classes of mutants: those with altered composition (high α - or high δ -tocopherol) and those

with increased or decreased total tocopherol. We focused on low tocopherol (*lt*) lines, reasoning that recessive mutations leading to this phenotype would reveal genes that play a role in regulating flux through the pathway, potentially including novel biosynthetic enzymes and pathways. One such mutant, *lt1*, was chosen for further analysis because it showed an 80% reduction in total seed tocopherols, as shown in Figure 2. There was a 65% reduction in leaf tocopherol in this mutant: 6.0 ± 0.3 ppm ($n = 55$) for the mutant versus 17.4 ± 0.8 ppm ($n = 9$) for the wild type, expressed on a fresh weight basis (\pm SE of the mean). These data demonstrate that the phenotype was not restricted to the seed.

As shown in Figure 3, genetic mapping narrowed this mutation to a 37-kb region of BAC T32M21 on chromosome 5, unlinked to previously published *VTE* loci (Sattler et al., 2004b). DNA sequence analysis revealed a single mutation compared with wild-type Columbia-0 (Col-0) in the previously unannotated gene T32M21_90 (*Arabidopsis* gene locus At5g04490). This G→A transition mutation at base pair 681 relative to the ATG for this protein is predicted to convert a Trp residue (TGG) to an opal stop codon (TGA) and would cause production of a 24.4-kD truncated protein in place of the predicted 33.1-kD full-length protein. Based upon the genetic results and data described below, we propose the allele designation *vte5-1*.

Transgenic Expression of *VTE5* in *Arabidopsis* Wild Type and *vte5-1* Mutant

To test whether the mutation in At5g04490 caused the low total tocopherol phenotype observed in the mutant *lt1*, both mutant and parental Col-0 wild type were transformed with pMON69914, harboring wild-type *VTE5* flanked by the napin promoter and the napin 3'-untranslated region on its 5'- and 3'-ends, respectively (Norris et al., 2004), or with an empty vector control. Seed tocopherol levels in *vte5-1* transformed with the seed-specific *VTE5* expression construct increased more than threefold compared with mutant seed tocopherol levels and reached nearly wild-type seed tocopherol levels in R2 seed populations (Table 1); the small difference from the wild type is likely to be caused by

segregation of homozygous *vte5-1* mutant progeny without the complementing transgene and by variation of *VTE5* expression levels among different events due to the tDNA integration loci. These results confirm that the *vte5-1* mutation caused the low tocopherol phenotype in *lt1*. Transformation of wild-type *Arabidopsis* with a binary vector harboring the seed-specific T32M21_90 expression cassette (pMON69914) resulted in slightly increased seed tocopherol levels in the population of R2 seed (Table 1); however, the level of tocopherol increase was not significant at P-values below 0.05. In R3 seed, only one out of five events (S10154N) chosen from this population had a small (6%) but significant increase in seed tocopherol levels, at the 0.05 level (see Supplemental Table 1 online).

Generation of a *Synechocystis* Mutant

To test the general involvement of *VTE5* orthologs in tocopherol biosynthesis, we evaluated the phenotype of a *Synechocystis* sp PCC 6803 *slr1652* deletion-insertion mutant. The *slr1652* gene is the closest *Synechocystis* homolog of *VTE5*. This mutant was generated through homologous recombination as described in Methods. Cells were grown to OD₇₃₀ 2.0 to 2.5 and tested for total tocopherols. The wild-type culture and two representative mutant cultures (Δ *slr1652-1* and Δ *slr1652-2*) revealed average tocopherol contents of 80.5 ± 0.5 , 42.0 ± 0.9 , and 21.0 ± 0.1 ng per OD unit (OD₇₃₀) for two independent measurements, respectively. This represents a tocopherol reduction of 50 to 75% in the mutants.

Bioinformatic Analysis

Bioinformatic analysis of the deduced *VTE5* amino acid sequence was undertaken to seek hypotheses regarding possible roles for this gene in tocopherol metabolism and revealed homology to the PFAM domain of cytidylyltransferases (CTP_transf_1, PFAM accession number PF01148). The members of this family are integral membrane proteins and include the archetype phosphatidate cytidylyltransferase (EC 2.7.7.41) as well as *SEC59* from yeast, which is a dolichol kinase (EC 2.7.1.108). A likely membrane localization of the putative *VTE5* protein product was

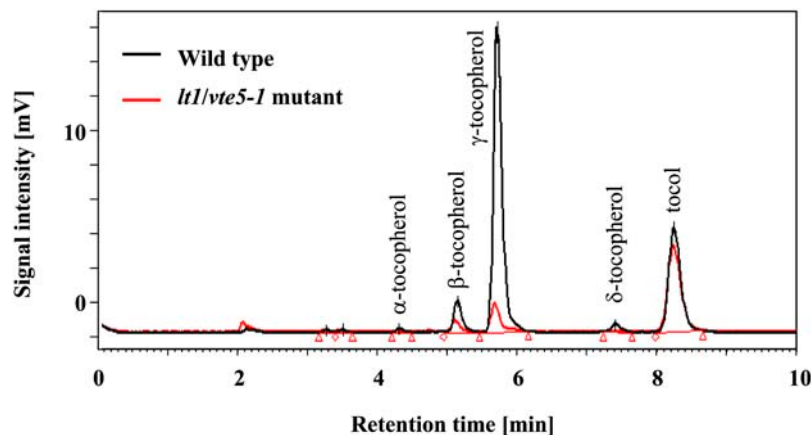


Figure 2. HPLC Analysis of Tocopherol Content in Seed Extracts from Wild-Type *Arabidopsis* and the *Arabidopsis lt1* Mutant.

Wild-type trace is shown in black and *lt1* in red. Tocol was used as an internal standard.

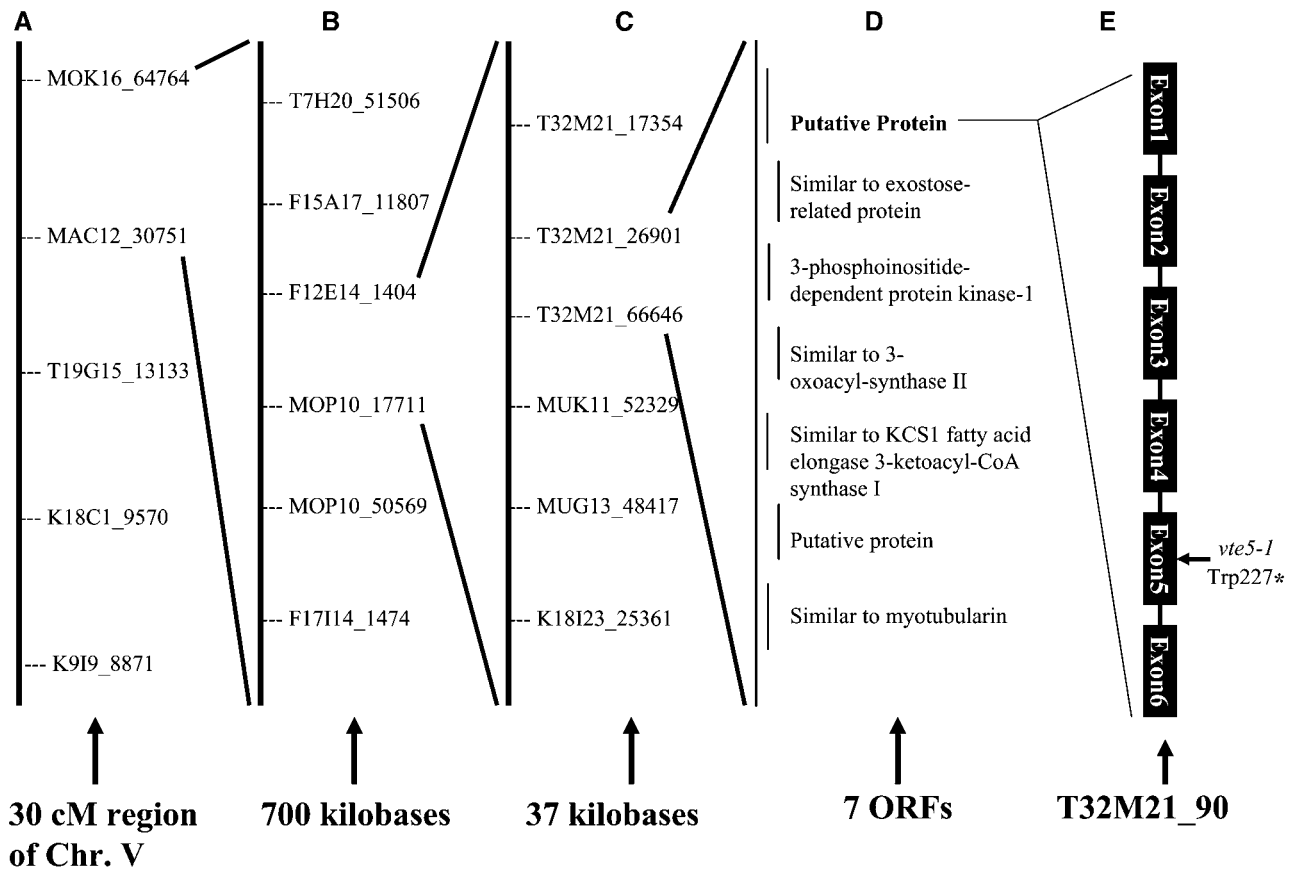


Figure 3. Map-Based Identification of the *vte5-1* Mutation.

- (A)** Low-resolution mapping. Four hundred F3 plants were genotyped to show linkage to the genetic markers MOK16_64764 and MAC12_30751 on chromosome V. cM, centimorgan.
- (B)** Narrowing the interval between two core markers. Additional markers were assayed to identify a 700-kb region containing the mutation.
- (C)** High-resolution mapping. An additional 2000 F3 plants were scored using single nucleotide polymorphism markers within the 700-kb region. Markers T32M21_26901 and T32M21_66646 were found to be the closest flanking markers based on the available recombinants, narrowing the interval to 37 kb.
- (D)** The entire 37-kb region containing seven open reading frames (ORFs) was sequenced from the *lt1* mutant.
- (E)** A single G → A point mutation was detected in exon 5 of T32M21_90. It is predicted to convert a Trp codon to an opal nonsense codon.

reinforced when the deduced amino acid sequence was analyzed using the TMHMM algorithm (Krogh et al., 2001), which predicted six transmembrane helices corresponding to amino acids 29 to 51, 66 to 88, 105 to 122, 127 to 149, 168 to 187, and 226 to 248.

A BLAST search of *VTE5* against the *Arabidopsis* genome identified a putative paralog (gi number 51970322, ATG ID At5g58560). The deduced amino acid sequences of these two genes were 38.7% identical (using GAP algorithm from the GCG Wisconsin Package; http://www.accelrys.com/products/gcg_wisconsin_package/), as shown in Figure 4A. At5g58560 was also found to contain the PFAM domain of integral membrane protein cytidylyltransferases (CTP_transf_1) and also includes six TMHMM-predicted transmembrane helices. It is interesting to note that the non-sense protein fragment predicted to be synthesized in *vte5-1* would delete approximately one-third of the conserved C-terminal sequence, including the last transmembrane domain of *Arabidopsis VTE5* (Figure 4B). A second BLAST search comparing *VTE5* with the GenBank nonredundant

amino acid database and Monsanto proprietary databases identified homologous sequences in archaea, eubacteria, cyanobacteria, and plants. A multiple sequence alignment comparing putative plant and *Synechocystis* orthologs to each other and *Arabidopsis* and yeast dolichol kinases is shown in Figure 4A. Sequence analysis of the deduced amino acid sequences of plant-derived *VTE5* orthologs using ChloroP (Emanuelsson et al., 1999) predicted chloroplast targeting for all plant genes. Phylogenetic analysis of these genes identifies two distinct clades in plants, each represented by *VTE5* or At5g58560, its related *Arabidopsis* gene. A neighbor-joining tree constructed using representative sequences is shown in Figure 5.

Accumulation of Tocopherol Pathway Intermediates and Chlorophyll

Dolichol is a long-chain isoprenoid molecule consisting of nine or more isoprenoid units and thus is similar in structure to phytol,

Table 1. Tocopherol Content of Transgenic and Mutant *Arabidopsis* Seed

Line	Generation	Event No.	n ^b	Mean Tocopherol Levels ^a (ng/mg seed)	Significance ^a
<i>vte5-1</i> mutant parent		Mean of population	17	100 ± 2.7	C
Wild type + vector control	R2	Mean of all events	4	458 ± 14.3	A
Wild type + pMON69914	R2	Mean of all events	28	476 ± 5.4	A
<i>vte5-1</i> mutant + pMON69914	R2	Mean of all events	20	365 ± 6.4	B
<i>vte5-1</i> mutant + vector control	R2	Mean of all events	4	87 ± 14.3	C

^a Means, standard error, and significance were calculated using Tukey-Kramer's honestly significant difference (HSD) test. Means followed by the same letters are not significantly different from each other ($\alpha = 0.05$).

^b Number of individual plants (for *vte5-1* mutants) or events (for transgenic lines) analyzed.

a putative precursor for tocopherol biosynthesis (Collakova and DellaPenna, 2003). Based on the similarity of *VTE5* to known dolichol kinases, we developed a working hypothesis that *VTE5* encodes a phytol kinase. If PDP is synthesized from phytol, a phytol kinase loss-of-function mutant would be expected to accumulate free phytol. Consistent with our hypothesis, *Arabidopsis* seed from the *vte5-1* mutant contained threefold more free phytol than wild-type seed, as shown in Table 2. In *Synechocystis*, this effect was much stronger: while free phytol was below the limit of detection (<1 ng/OD₇₃₀ unit) in wild-type cells, Δ *slr1652-1* and -2 mutant cells contained >200 ng free phytol/OD₇₃₀ unit (Table 2), representing a >200-fold increase.

The accumulation of free phytol in *Synechocystis* cultures and *Arabidopsis* seed gave rise to the question of how chlorophyll levels might be affected. To elucidate this question, total leaf chlorophyll levels in nine wild-type plants and 55 *vte5-1* mutants were analyzed. The average chlorophyll levels were 1.25 ± 0.05 and 1.17 ± 0.02 μ g/mg fresh leaf mass for the *Arabidopsis* wild type and the *vte5-1* mutant, respectively. Although the chlorophyll content of the mutants was on average lower than in wild-type plants, the difference was not significant within the 95% confidence interval ($\alpha = 0.05$).

Heterologous Expression of *Arabidopsis* *VTE5* and *Synechocystis* *Vte5* Proteins in *Escherichia coli*

Additional confirmation that *Arabidopsis* *VTE5* encodes a protein with phytol kinase activity was obtained by heterologous expression of the protein in *Escherichia coli* in the presence of exogenously added phytol. Extracts from treated cells were subjected to liquid chromatography–mass spectrometry (LC-MS) analysis for the presence of phytolmonophosphate (PMP), PDP, geranylgeranylmonophosphate (GGMP), and GGDP (see Methods for details regarding these assays). As shown in Figure 6, *E. coli* cells transformed with the plasmid expressing *Arabidopsis* *VTE5* (pET30b-*VTE5*) contained >70-fold more PMP than the vector control (note the log scale on the ordinate of Figure 6). Supplementation of the incubation medium with 0.2% toluene further increased PMP accumulation in the *VTE5*-expressing strain by >10%, presumably due to improved phytol uptake (data not shown). PDP, GGMP, or GGDP levels detected in these *E. coli* extracts were each <1% of PMP levels and did not increase as a result of *VTE5* expression.

Further confirmation that *VTE5* encodes a phytol kinase was obtained by enzyme assay of washed *E. coli* membrane fractions from strains expressing *Synechocystis* *Vte5* or *Arabidopsis* *VTE5*. As shown in Table 3, both enzymes exhibited highest activity using CTP as cosubstrate (Table 3). ATP and GTP did not support the phytol kinase reaction.

DISCUSSION

We describe the identification of *VTE5*, a gene encoding a novel enzyme required for seed tocopherol biosynthesis using *Arabidopsis* mutant screening and map-based gene identification. The starting *Arabidopsis* mutant has reduced seed and leaf tocopherol, and a knockout mutation of the *Synechocystis* homolog of *Arabidopsis* *VTE5* also led to reduced tocopherol accumulation in *Synechocystis*, reinforcing the general relevance of these genes for tocopherol biosynthesis.

We reasoned that the *Arabidopsis* *VTE5* and *Synechocystis* *vte5* genes might encode phytol kinases based on homology of the deduced amino acid sequences to dolichol kinases. Two lines of in vivo evidence are consistent with this hypothesis. First, gas chromatography–mass spectrometry analysis of the *Arabidopsis* and *Synechocystis* mutants demonstrated accumulation of free phytol. Second, expression of *Arabidopsis* *VTE5* protein in *E. coli* in the presence of free phytol led to the formation of PMP. These data were confirmed in enzyme assays using washed *E. coli* membranes from strains expressing *Arabidopsis* *VTE5* or *Synechocystis* *Vte5* proteins: both enzymes produced PMP in the presence of CTP or UTP, consistent with observations of a preference for CTP by dolichol kinase and farnesyl kinase (Heller et al., 1992; Thai et al., 1999). While published data indicate that farnesyl kinase also utilized UTP and GTP as cosubstrates (Thai et al., 1999), phytol kinase only utilized UTP as an alternative cosubstrate. Finally, both dolichol kinase and farnesyl kinase appear to produce the respective isoprenoid monophosphates (Heller et al., 1992; Thai et al., 1999). Taken together, the mutant phenotypes, in vitro activities, and analogy to related enzymes strongly suggest that *Arabidopsis* *VTE5* and *Synechocystis* *vte5* encode phytol kinases.

While the presence of an isoprenoid kinase for phytol activation was previously discussed (Soll et al., 1980; Hörtensteiner, 1999), it appears to be generally accepted that direct reduction of GGDP to PDP by GGR is the main pathway for the formation of

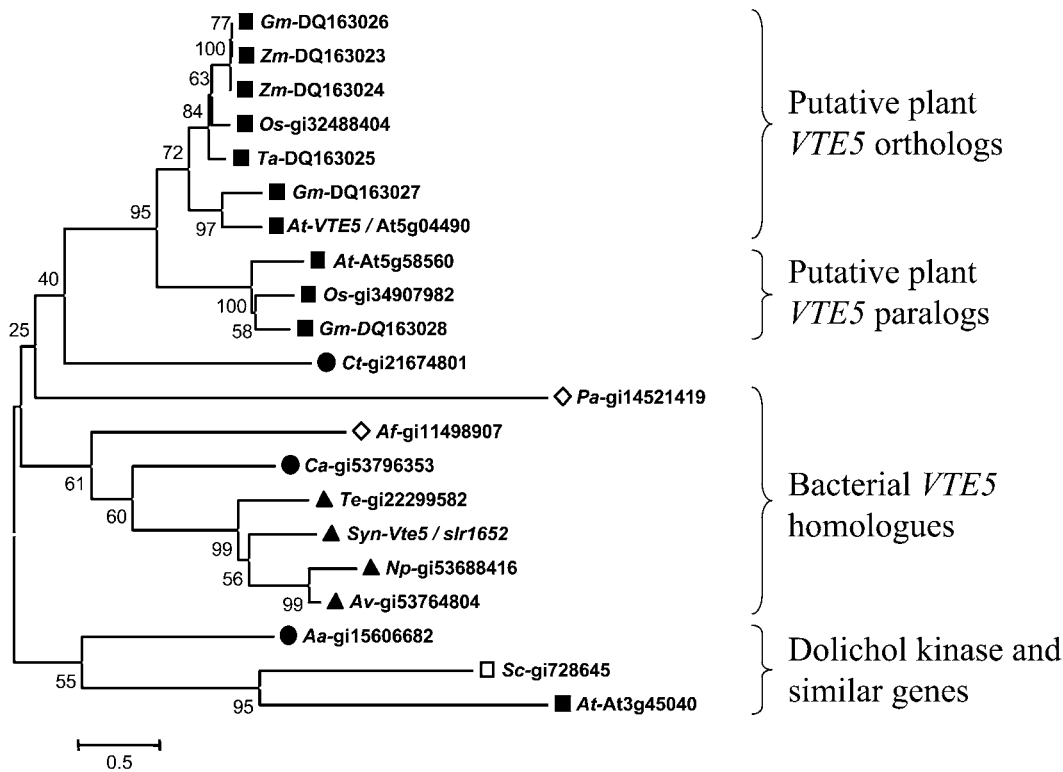


Figure 5. Neighbor-Joining Tree of VTE5 Orthologs.

The tree was constructed from representative VTE5 orthologous sequences using a p-distance amino acid distance model and pairwise deletion. For details, see Methods. The alignment used to generate this tree is provided in Supplemental Figure 1 online. Closed squares represent plant sequences, the open square indicates yeast sequence, closed triangles represent cyanobacterial sequences, closed circles show eubacterial sequences, and open diamonds indicate archaeal sequences. The relationship of yeast (*Sc*) and *Arabidopsis* (*At*) dolichol kinases to the VTE5 family is also shown. The numbers on the left side indicate percent bootstrap values. The branch lengths calculated based on 5% amino acid substitutions per site are shown by the bar labeled 0.5. Reference numbers are as follows: numbers following the species abbreviations represent accession numbers; *Synechocystis vte5*, nucleotides 3,452,461 to 3453162, accession number gi|47118304. *Aa*, *Aquifex aeolicus* VF5; *Af*, *Archaeoglobus fulgidus*; *At*, *Arabidopsis thaliana*; *Av*, *Anabaena variabilis*; *Ca*, *Chloroflexus aurantiacus*; *Ct*, *Chlorobium tepidum*; *Gm*, *Glycine max*; *Np*, *Nostoc punctiforme*; *Os*, *Oryza sativa*; *Pa*, *Pyrococcus abyssii*; *Sc*, *Saccharomyces cerevisiae*; *Syn*, *Synechocystis* sp PCC 6803; *Te*, *Thermosynechococcus elongatus*; *Zm*, *Zea mays*.

the tocopherol precursor PDP (Soll et al., 1983; Keller et al., 1998; Grusak and DellaPenna, 1999; Bramley et al., 2000; Collakova and DellaPenna, 2003; Hofius and Sonnewald, 2003; Rippert et al., 2004). By contrast, our study strongly suggests that the majority of tocopherol that accumulates in *Arabidopsis* seed and leaf and in *Synechocystis* cells is synthesized via a phytol intermediate and that PMP is converted to PDP by a second, as yet unidentified, kinase. Recycling of phytol chains during chlorophyll degradation is a logical source of substrate for phytol kinase as shown in Figure 1, and there are several lines of evidence in support of this hypothesis. For example, Rise et al. (1989) showed that accumulation of α -tocopherol was negatively correlated with chlorophyll content in several plant species during natural and artificial leaf senescence. We (Figure 7) and others (Goffman et al., 1999) have also observed an inverse correlation between seed chlorophyll and tocopherol levels during canola seed development, indicating that this phenomenon is not restricted to leaf. Analysis of ATGENEXPRESS 22K Affymetrix ATH1 transcript profiling data (<http://web.uni-frankfurt.de/fb15/botanik/mcb/AFGN/atgenex.htm>) using GENEVESTIGATOR

software (Zimmermann et al., 2004; <https://www.geneinvestigator.ethz.ch/>) revealed that VTE5 mRNA expression is relatively high in 6-week-old senescent *Arabidopsis* leaves compared with slightly younger vegetative plants (ATGENEXPRESS experiment 25). The gene is also highly expressed early in seed development (silique stages 3 to 5; ATGENEXPRESS experiments 76 to 78). Taken together, the combination of *Arabidopsis* VTE5 and *Synechocystis vte5* mutant phenotypes, the results from expression of VTE5 proteins in *E. coli*, the plausible central role for phytol kinase in chlorophyll phytol tail recycling, and correlations between conditions that enhance chlorophyll breakdown and increases in tocopherol levels and VTE5 transcript strongly suggest that phytol kinase plays an important role in tocopherol biosynthesis and phytol recycling. This role is also consistent with the observation of nearly unchanged chlorophyll levels in the *vte5-1* mutant compared with the wild type, assuming chlorophyll formation from GGDP is not limiting and GGDP is the primary source for chlorophyll biosynthesis via geranylgeranyl chlorophyll as suggested previously (Rüdiger et al., 1980).

Table 2. Free Phytol Levels in Mature *Arabidopsis* Seed and *Synechocystis* Cells

Source	Phytol Content [ng/mg]	
	<i>n</i> ^a	Mean ^b
<i>Arabidopsis</i> Col-0	2	101.7 ± 6.5
<i>Arabidopsis vte5-1</i>	2	297.4 ± 24.2
	Phytol Content (ng/OD unit)	
<i>Synechocystis</i> sp PCC 6803	2	nd ^c
<i>Synechocystis</i> sp PCC 6803 <i>Δslr1652-1</i>	2	229.5 ± 4.0
<i>Synechocystis</i> sp PCC 6803 <i>Δslr1652-2</i>	2	252.5 ± 12.5

^a Number of individual samples originating from separately grown cultures analyzed.

^b Means and standard error were calculated using Tukey-Kramer's HSD test.

^c Below the limit of detection (<1 ng/OD₇₃₀ unit in bacterial cell samples).

The relative importance of synthesis of PDP from GGDP versus from free phytol remains an open question for several reasons. First, although the *vte5-1* allele is predicted to encode a truncated peptide missing 9.7 out of 33.1 kD at the conserved C terminus, including phylogenetically conserved regions, it is unknown whether the nonsense fragment has residual enzymatic activity. A second complication is due to the possibility that other isoprenoid kinases, such as the paralog At5g58560, might partially substitute for VTE5 activity in the mutant. Substitution by farnesyl kinase is unlikely, as this enzyme was localized in the microsomal fraction (Thai et al., 1999), whereas VTE5 appears to be targeted to the plastids. Unfortunately, published data for tobacco (*Nicotiana tabacum*) antisense GGR lines (Tanaka et al., 1999) and

a *Synechocystis* GGR mutant (Shpilyov et al., 2005) with reduced tocopherols do not provide clear evidence in favor of either model. This is because of the possible dual role for GGR in PDP formation via a geranylgeranyl chlorophyll intermediate from chlorophyll recycling and in conversion of GGDP to PDP (Figure 1).

While PDP is commonly thought to be an intermediate in the biosynthesis of phytol chain-containing molecules, such as tocopherols and phylloquinone, and potentially in chlorophyll synthesis and recycling, less attention has been paid to a role for PMP. Our data suggest that PMP is indeed an intermediate in tocopherol biosynthesis and that *Arabidopsis* and *Synechocystis* presumably contain an activity that converts PMP to PDP. An alternative hypothesis is that the *Arabidopsis* VTE5 and *Synechocystis* Vte5 proteins normally convert phytol directly to PDP, and the PMP detected in our experiments is an assay artifact. Indeed, LC-MS analysis of *E. coli* extracts revealed the unexpected presence of substantial amounts of GGMP in addition to GGDP (Figure 6), raising the possibility of an interfering isoprenoid diphosphate phosphatase in the *E. coli* extracts.

Three lines of evidence argue against the phosphatase hypothesis. First, incubation of exogenous radiolabeled GGDP with the washed *E. coli* membrane fractions used for the phytol kinase assay did not result in the detection of GGMP (data not shown), arguing against the presence of a contaminating isoprenoid diphosphate phosphatase activity in the VTE5 enzyme assay. Second, the isoprenoid kinases characterized to date, SEC59 and farnesyl kinase, produce isoprenoid monophosphates, as we observed for VTE5 (Heller et al., 1992; Thai et al., 1999). Third, *E. coli* (pET30b) produced low levels of PDP and PMP when incubated with free phytol, indicating that *E. coli* harbors an enzyme or enzymes that can produce these intermediates at low levels. While the PMP level in *E. coli* expressing *Arabidopsis* VTE5 protein increased by >70-fold when incubated with phytol,

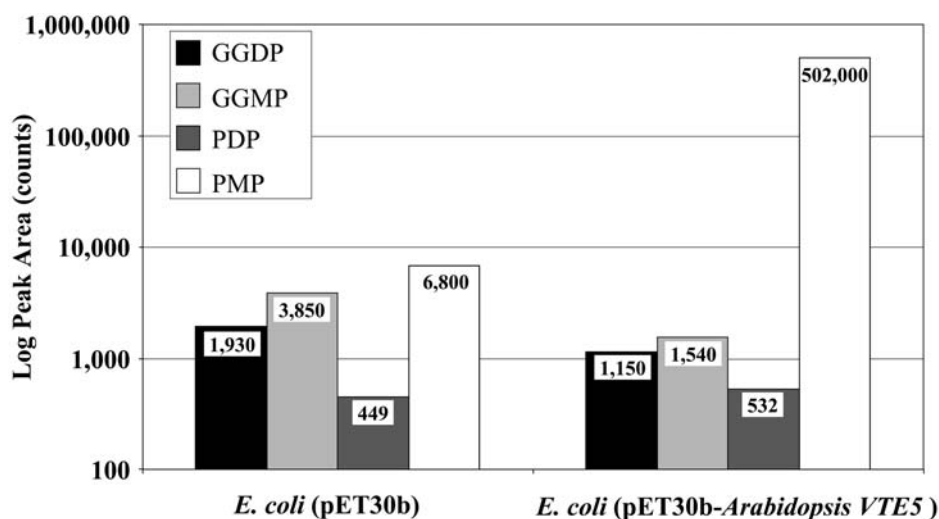


Figure 6. Contents of Isoprenoid Monophosphates and Diphosphates in Extracts of *E. coli* Expressing *Arabidopsis* VTE5 and *E. coli* Harboring the Empty Plasmid Control.

Isoprenoid phosphates were measured on lyophilized *E. coli* cells obtained from 50 mL of overnight-induced LB cultures that had been harvested and resuspended in 5 mL of fresh LB medium containing 5 mM phytol, followed by 3 h incubation at 22°C and 220 rpm shaking.

Table 3. Phytol Kinase Activity in Membrane Fractions from Transformed *E. coli* Expressing *Arabidopsis VTE5* or *Synechocystis vte5*

Vector Designation	Enzyme Activity (nmol·mg ⁻¹ ·min ⁻¹)				
	Cosubstrate				
	0.5 mM ATP	0.5 mM GTP	0.5 mM CTP	0.5 mM UTP	0.15 mM NTPs
pET30b <i>Arabidopsis VTE5</i>	nd ^a	nd	36.7 ± 2.5	21.1 ± 4.2	33.1 ± 0.6
pET30b <i>Synechocystis vte5</i>	nd	nd	16.9 ± 1.6	12.5 ± 1.2	12.8 ± 0.2
pET30b	nd	nd	nd	nd	nd

Average enzyme activities are based on four independent measurements.

^and, below the limit of detection (<32 pmol·mg⁻¹·min⁻¹).

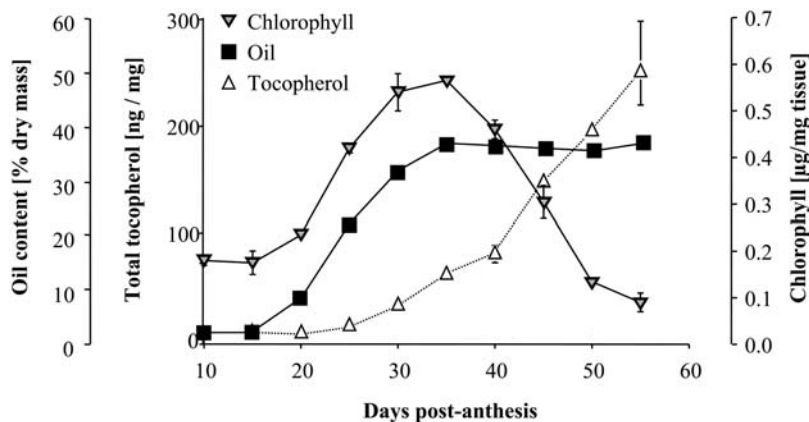
PDP levels were equivalent to the empty vector control. If PDP was the primary reaction product of *Arabidopsis VTE5* and was subsequently broken down to PMP, the PDP:PMP ratio might be expected to be equivalent to the empty vector control. The results shown in Figure 6 indicate that this is not likely to be the case; the substantial PMP increase observed in *Arabidopsis VTE5* expressing *E. coli* in the presence of free phytol was not accompanied by a comparable change in PDP. Taken together, these arguments are consistent with the hypothesis that the *Arabidopsis VTE5* and *slr1652* genes encode proteins that catalyze the conversion of phytol to PMP.

If PMP is a bona fide intermediate in tocopherol biosynthesis, both *Arabidopsis* and *Synechocystis* must contain PMP kinase activity. Indeed, an isoprenoid kinase that converts GGMP to GGDP has been previously reported in etioplast membranes (Rüdiger et al., 1980). The high degree of structural similarity between GGMP and PMP might allow for both of these substrates to be phosphorylated by this enzyme. One possibility is that the *Arabidopsis VTE5* paralog At5g58560 might encode such an enzyme, though we found no clear homolog to *slr1652* in the *Synechocystis* sp PCC 6803 genome. In fact there is precedence in the tocopherol biosynthetic pathway for related enzyme activities being encoded by genes with limited amino acid similarity in cyanobacteria and *Arabidopsis*: the 2-methyl-6-

phytylbenzoquinol methyltransferases of *Anabena* and *Synechocystis* share limited sequence similarity to *Arabidopsis VTE3* (Cheng et al., 2003; Van Eenennaam et al., 2003).

More distant *VTE5* homologs are also identifiable in archaea as well as in fungi and animals, where all of these genes, including *VTE5* and At5g58560, have been classified as members of COG0170 in the Clusters of Orthologous Genes classification system (Tatusov et al., 2001). COG0170 has been designated as dolichol kinase, based on alignment with the parent archetype, the SEC59 dolichol kinase of *Saccharomyces cerevisiae* (Heller et al., 1992). Based on the data presented in this article, we propose COG0170 to be renamed with the more inclusive name of “polyprenol kinase,” with members functioning as dolichol kinases, phytol kinases, and polyprenol kinases with as yet unidentified substrate specificities.

The results described above demonstrate an important role for phytol as a substrate in tocopherol biosynthesis. The most significant immediate impact of this study is in focusing attention on the importance of chlorophyll breakdown in producing tocopherol phytol tails. However, our data leave open significant questions. First, given that *Arabidopsis* GGR enzyme is proposed to use both GGDP and geranylgeranyl chlorophyll *a* as substrate based upon assays using *E. coli* lysates (Keller et al., 1998), it is important to determine the substrate specificities

**Figure 7.** Profile of Tocopherol, Chlorophyll, and Oil Accumulation in Developing *Brassica napus* Seed.

Seeds were harvested every 5 d from 10 to 55 d after pollination and were assayed for tocopherol (open triangles) and chlorophyll (shaded triangles) content on a fresh weight basis. Oil content (squares) measured by percentage of fatty acid methyl ester was measured on a dry weight basis. Each data point represents the average of two independent measurements, and error bars represent standard deviation.

using purified enzyme and to use genetic approaches to assess the relative in vivo contributions of GGDP and phytol in seed tocopherol accumulation. Although our studies focused on the impact of phytol kinase on seed tocopherol accumulation, this enzyme is likely to play important roles in photosynthetic tissues in tocopherol biosynthesis, recycling of chlorophyll, and synthesis of phyloquinone. Finally, it will be important to identify the kinase that is responsible for conversion of PMP to PDP. These studies reinforce the continued value of forward genetic screens in detailed characterization of biosynthetic pathways and the enzymes that regulate flux and accumulation of small molecules.

METHODS

Mutant Isolation and Gene Identification

Tocopherol mutants were screened as described by Van Eenennaam et al. (2003), and individual plant lines with decreased total tocopherol levels were selected as putative *lt* mutants. To both confirm the mutant phenotype and attempt to isolate true breeding lines, tocopherol levels were analyzed in M4 families.

Genetic Mapping and Gene Identification

A homozygous mutant line (Col-0 background) with an 80% reduction in tocopherol levels, referred to as *lt1* was selected for map-based cloning. Genetic mapping and gene identification were done according to Jander et al. (2002). DNA extraction, genotyping, and sequencing of the 37-kb region containing *vte5-1* were performed according to Van Eenennaam et al. (2003).

Bacterial Strains and Growth Conditions

Synechocystis sp PCC 6803 (ATCC 27184) was obtained from the American Type Culture Collection. *Synechocystis* cultures were grown as described (Savidge et al., 2002), and mutants were grown in medium supplemented with 5 μ g/mL kanamycin.

Generation of *Synechocystis* sp PCC 6803 Mutant Strains

A BLAST search of Cyanobase (<http://www.kazusa.or.jp/cyanobase/>) using the deduced amino acid sequence of *T32M21_90* against the *Synechocystis* sp PCC 6803 genomic sequence (Kaneko et al., 1996) identified *slr1652*, which we designated *Synechocystis vte5* as the *Synechocystis* ortholog of *Arabidopsis thaliana* *VTE5*. To generate *Synechocystis* sp PCC 6803 *vte5* deletion-insertion mutants (*Synechocystis* sp PCC 6803 Δ *slr1652*), two separate \sim 0.45-kb fragments corresponding to sequences surrounding the 5'- and 3'-regions of the *Synechocystis vte5* coding sequence were amplified from *Synechocystis* genomic DNA by PCR using primer pairs 1652-e-1-f (5'-CCGAGCGGCCGATTATCCCAAGATCACTGG-3') plus 1652-i-2-r (5'-GCCGAGGATCCACCAAGCAATCAGCACC-3'), and 1652-i-3-f (5'-GCCGAGGATCCTGGTGGGACAAAGGTG-3') plus 1652-e-4-r (5'-GCCGAGCTCGAGCCCAATTCCGGGTATTG-3'), respectively. The PCR products were cloned into pBluescript KSII+ (Stratagene) as *NotI*-*Bam*HI and *Bam*HI-*Xho*I fragments, resulting in the creation of a 236-bp deletion from *Synechocystis vte5* starting 186 bp downstream of the ATG codon. Subsequently, the 1.25-kb kanamycin resistance cassette from pKISS (Amersham Pharmacia Biotech) was excised as an *Ecl*136II fragment and cloned into the T4-DNA polymerase-blunted *Bam*HI site of the *Synechocystis vte5* deletion plasmid. The resulting plasmid was designated pMON78621. It contained the kanamycin resistance gene in the same orientation as the internally truncated *Synechocystis vte5* gene.

Knockout mutants were obtained as described by Williams (1988). Two kanamycin-resistant transconjugants (*Synechocystis* sp PCC 6803 Δ *slr1652-1* and Δ *slr1652-2*) were selected for further experimentation. For confirmation that the deletion allele had clearly replaced the wild-type *Synechocystis vte5* gene in both transconjugants, genomic DNA from those mutants was subjected to PCR with the primer pair 1652-e-1-f and 1652-e-4-r.

Bioinformatic Analysis

Sequence homology searches were performed using the GenBank nonredundant database (www.ncbi.nlm.nih.gov). Assignment of *T32M21_90* (*Arabidopsis VTE5*) and *slr1658* (*Synechocystis vte5*) to existing protein families was performed using the PFAM database (<http://pfam.wustl.edu>). Multiple alignments of representative *Arabidopsis VTE5* homolog sequences and dolichol kinase sequence from yeast and *Arabidopsis* was performed using ClustalX (Thompson et al., 1997) and visualized and edited using Genedoc (Nicholas et al., 1997). Sequences from the N-terminal region of yeast dolichol kinase and *Arabidopsis* not conserved in *Arabidopsis VTE5* were deleted from multiple alignments. In addition, the first 10 to 70 N-terminal amino acids presumed to function as cellular localization signals based on ChloroP analysis and not well conserved among *Arabidopsis VTE5* homologs were deleted from the multiple alignments. Phylogenetic analysis was performed using MEGA2 phylogenetic analysis software (Kumar et al., 2001). A neighbor-joining tree was constructed using a p-distance amino acid distance model and pairwise deletion. Bootstrap values calculated from 500 replications are shown. ChloroP 1.1 was used for predicting chloroplast target peptides (Emanuelsson et al., 1999). Transmembrane helices were predicted using TMHMM 2.0 software (Krogh et al., 2001).

Expression of *Arabidopsis VTE5* and *Synechocystis Vte5* Proteins in *E. coli*

The full-length coding sequence of *Synechocystis vte5* (nucleotides 3,452,461 to 3,453,162, accession number gi47118304) and the ChloroP predicted mature *Arabidopsis VTE5* protein coding sequence (5'-ATGTCAGCAGTTGCGACGAATTC-3' to 5'-ATTTAAGTTTCGGATATTAG-3') were amplified by PCR and subcloned in the expression plasmid pET30b (Novagen), and the sequences were confirmed by DNA sequence analysis, yielding plasmids pET30b *Synechocystis vte5* (pMON78631) and pET30b *Arabidopsis VTE5* (pMON69926), respectively. These plasmids were transformed into *Escherichia coli* Tuner (DE3) cells (Novagen) and transformants selected on Luria-Bertani (LB) medium supplemented with 25 μ g/mL kanamycin. For induction of gene expression, transformants selected from single colonies were grown in liquid LB supplemented with 25 μ g/mL kanamycin to \sim 0.8 A_{600} , and 0.5 mM isopropylthio- β -galactoside (Gold Biotechnologies) was added, followed by 18 h of incubation at 30°C and 220 rpm shaking.

For in vivo phytol feeding experiments, 50 mL of induced cells were harvested by 10 min centrifugation at 7000g and 30°C. The cell pellet was resuspended in 5 mL fresh LB-kanamycin medium (22°C) containing 5 mM phytol (Sigma-Aldrich), with or without 0.2% toluene to facilitate phytol uptake, and the culture was transferred to 50-mL Erlenmeyer flasks. The cultures were shaken at 220 rpm at 30°C for 3 h. At the end of the incubation period, cells were harvested by 10-min centrifugation at 7000g at 4°C and washed once with ice-cold LB medium supplemented with 10 mM phosphatase inhibitor sodium fluoride. The washed cells were subsequently frozen at -80°C and lyophilized to dryness. Dried cell powders were used for extraction and analysis of phytol phosphates.

Isolation of *E. coli* Membrane Fractions

Purified membrane fractions from induced *E. coli* cells were isolated as described by Moshiri et al. (1991), with the following modifications: cell

pellets from 150 mL induced *E. coli* Tuner (DE3) cultures were washed once with 20 mM Tris-HCl and 150 mM NaCl, pH 7.4, and resuspended in 6 mL of breaking buffer (20 mM Tris-HCl, containing 150 mM NaCl, 2 mM $MgCl_2$, and 200 μ M phenylmethane sulfonyl fluoride, pH 7.4) supplemented with 50 units of Benzonase protease inhibitor (Novagen). After ultracentrifugation, the membrane pellet was washed once with the same buffer lacking Benzonase. Washed membranes were resuspended in 3 mL of 20 mM Tris-HCl, pH 7.4, containing 10 mM $MgCl_2$, 5 mM mercaptoethanol, and 200 μ M phenylmethane sulfonyl fluoride and stored in aliquots at $-80^\circ C$ until use.

Tocopherol Analysis

Tocopherol analysis of *Arabidopsis* seed and *Synechocystis* cultures was performed as described by Savidge et al. (2002) and Van Eenennaam et al. (2003), respectively. For leaf tocopherol analysis, whole plants were collected and immediately frozen on dry ice. The leaf material was ground in medium Delrin tubes using a precooled three-quarter-inch steel ball (cooled in liquid nitrogen) by vigorously shaking for 60 s at 1000 strokes per minute at an amplitude of 3.81 cm, using a machine built in house. Approximately 25 to 40 mg of frozen ground leaf material was weighed into 1.4-mL Screen Mate tubes and proceeded as described (Savidge et al., 2002). Statistical data analysis was performed using JMP statistical discovery software (SAS Institute; www.jmp.com).

Determination of Free Phytol

Phytol levels in liquid extracts of various biological materials, such as plants, was performed by use of gas chromatography (GC) using an Agilent 6890 (Agilent Technologies) coupled with a Pegasus III (LECO) time-of-flight mass spectrometer. The quantification was accomplished using an external standard curve constructed using a unique mass that represents phytol and using the retention time of the phytol eluting from the gas chromatograph. The identity of the phytol was further confirmed by comparing the mass spectra at this retention time with the reference standard. The detection limit of the instrument was $0.05 \text{ ng} \times \mu\text{L}^{-1}$. The method detection limit depends on the extract solution and the amount of noise created by the extract sample itself. Thus, method detection limits were determined on a sample-by-sample basis. The analysis time was <4 min per sample.

The GC column was a DB5. The dimensions of the column were 10 m in length, with an internal diameter of 180 μ m, and a film thickness of 0.18. The carrier gas was helium and flows through the column at a rate of 1.5 mL/min. A constant flow was maintained throughout the programmed temperature ramp of the chromatograph. The initial temperature of the column was $130^\circ C$ with no hold time. The temperature was increased at a rate of $30^\circ C$ per minute until the column reached $270^\circ C$ and was held at $270^\circ C$ for 2 min. One microliter of extract was injected into the injection port of the gas chromatograph. The mode of injection was splitless. The temperature of the injector was $250^\circ C$.

The outlet of the GC column was placed through a heated transfer line ($250^\circ C$) into the time-of-flight mass spectrometer. The instrument was operated in electron impact mode with ionization energy of 70 eV. The source was operated at a temperature of $200^\circ C$, and the detector voltage was 1600 V. The mass-to-charge (m/z) range was set to be between 45 and 305.

The standard curve was constructed using commercial standards (Sigma-Aldrich). The standard curve was an external curve and ranged in concentration from $7 \text{ ng} \times \mu\text{L}^{-1}$ to $0.14 \text{ ng} \times \mu\text{L}^{-1}$. The r^2 value for the curve was 0.9993. The m/z ratio used for quantification was 71. The retention time was 178 s for the *cis*-isomer and 183 s for the *trans*-isomer.

Extraction of GGDP/PDP for LC-MS Analysis

Isoprenoid phosphates were extracted by adding 1.5 mL of 80:20 (v:v) methanol:ethyl ether to each sample vial containing 12 to 15 mg of

lyophilized *E. coli* material. A spatula was used to break up the cell pellet to aid dissolution. The samples were treated for 10 min at speed 7 on a plate vortexer (VX-2500 Multi-Tube Vortexer; VWR). Samples were then centrifuged for 4 min in an Eppendorf tabletop centrifuge 5804 R at $2500g$, and the supernatants were removed for analysis.

Determination of GGDP, PDP, and Their Monophosphates Using LC-MS

The LC-MS system consisted of an HP1100 series HPLC (Agilent Technologies) connected to an API QSTAR Pulsar-i (Applied Biosystems) mass spectrometer using their Turbolonspray (i.e., electrospray) interface. The system was operated using the Analyst QS software (Applied Biosystems). The output of the LC column was connected to the Turbolonspray source utilizing a split of $\sim 1:5$ (MS:waste) at a HPLC flow rate of 1 mL/min. The mass spectrometer was operated in negative ion TOF MS mode, scanning from 360 to 460 atomic mass units to detect the various masses for GGDP, PDP, GGMP, and PMP. A Zorbax Eclipse XDB C8 Rapid Resolution column (4.6 \times 50 mm, 3.5 μ m; Agilent Technologies) was used to separate the analytes using gradient conditions. The HPLC mobile phase components used were (1) water, (2) acetonitrile, (3) 0.5% formic acid, and (4) 2% ammonium hydroxide. The gradient conditions are detailed in Supplemental Table 2 online. The complex gradient employed the use of both acid and base modifiers to achieve good analyte retention in HPLC as well as maintain ionization efficiency for MS. An injection volume of 40 μ L was used for all standards and samples. The total run time was 7 min.

The relative quantitation was based on the peak areas derived from extracted ion chromatograms centered around the appropriate quasi-molecular ion for each analyte: GGDP = 449.05 ± 0.05 ; GGMP = 369.10 ± 0.05 ; PDP = 455.10 ± 0.05 ; and PMP = 375.15 ± 0.05 . The approximate retention times of the analytes were as follows: GGDP, 2.6 min; GGMP, 2.8 min; PDP, 2.8 min; and PMP, 2.9 min. Although GGMP and PDP coeluted from the HPLC, they could be distinguished by mass.

GGDP standard was purchased from Sigma-Aldrich, and PDP was synthesized in house according to Joo et al. (1973). Based on LC-MS analysis, both commercial GGDP and in-house-synthesized PDP contained small amounts of the respective monophosphates. Representative chromatograms for GGDP, GGMP, PDP, and PMP standards and for extracts from *E. coli* (pET30b *Arabidopsis* VTE5) that had been incubated with free phytol for 3 h are shown in Supplemental Figure 2 online. Supplemental Figure 3 online represents an LC/MS/MS chromatogram of such an *E. coli* extract (A) and two representative product ion spectra observed during the MS/MS (product ion mode) scans, set to fragment the parent ions of 369.1 m/z (B) and 375.1 m/z (C) to verify the presence of GGMP and PMP, respectively.

Phytol Kinase Enzyme Assay

Membrane protein was quantified with Bradford reagent (Bio-Rad) using BSA as standard. The phytol kinase assays were performed according to a modified procedure from Thai et al. (1999). The enzymatic reaction mixture contained 25 mM Tris-HCl, pH 7.4, 0.1 to 0.5 mM CTP, 5 mM $MgCl_2$, 0.05% CHAPS, 10 mM sodium orthovanadate, 0.5 μ Ci [3H]-phytol (20 Ci/mmol; Moravek Biochemicals), 5 μ M nonradiolabeled phytol (Sigma-Aldrich), and 100 to 250 μ g membrane protein in a total volume of 100 μ L. Where indicated, CTP was replaced with ATP, GTP, UTP, or an NTP mixture. The reaction was incubated for 25 min at $37^\circ C$ and terminated by the addition of 1.0 mL of chloroform:methanol (2:1, v/v). The samples were centrifuged for 5 min at $3000g$, and the chloroform and methanol/aqueous fractions were taken to dryness under N_2 gas. The enzyme assay products were resolved in 200 μ L methanol and analyzed on an HP1100 series HPLC system consisting of an HP G1329A auto sampler, an HP G1311A quaternary pump, an HP G1315A diode array

detector, an HP G1321A fluorescence detector (Agilent Technologies), and a Packard Radiomatic 500TR flow scintillation analyzer (Hewlett-Packard). Phytol kinase reaction products were separated by reverse-phase HPLC using a Vydac model 201TP54 C₁₈ HPLC column (4.6 × 250 mm, 5 μm) coupled with an All-tech C₁₈ guard column (P.J. Cobert Associates) and solvent system A (25 mM NaHCO₃ in water) and B (100% acetonitrile). The solvent gradient raised buffer B from 30 to 100% in the time period 0 to 20 min, held buffer B constant at 100% from 20 to 39 min, and then reduced buffer B from 100 to 30% from 39 to 40 min. Compounds of interest were detected by a diode array detector set at 210, 254, and 365 nm and by the flow scintillation analyzer set at 156 keV of upper level discriminator to detect ³H compounds. The sample injection volume was 20 μL, and the flow rate was set at 1.0 mL/min. The retention times of phytol diphosphate, phytol monophosphate, and phytol are 10.2, 11.5, and 26.4 min, respectively, under these HPLC conditions.

Accession Numbers

Sequence data from this article can be found in the GenBank/EMBL data libraries under the accession numbers provided in Figure 5.

Supplemental Data

The following materials are available in the online version of this article.

Supplemental Table 1. Tocopherol Content of Transgenic *Arabidopsis* Seed from the R3 Generation.

Supplemental Table 2. LC-MS Gradient for the Separation of Isoprenoidphosphates.

Supplemental Figure 1. Multiple Alignments of All *VTE5* Homologs and Dolichol Kinases Used to Generate the Tree Shown in Figure 5.

Supplemental Figure 2. Total and Extracted Ion Chromatograms from LC-MS Analysis of Standard Mix and *E. coli* Cell Extract.

Supplemental Figure 3. LC/MS/MS Verification of Isoprenoidmonophosphate Formation in *E. coli*.

ACKNOWLEDGMENTS

We thank Rod Croteau, Dean DellaPenna, and Yossi Hirschberg for comments on the manuscript. We wish to thank our colleagues in biochemistry, plant transformation, and the plant growth facilities for their expert assistance and support. We also wish to thank our colleagues at Renessen for their support and advice.

Received August 24, 2005; revised October 3, 2005; accepted November 14, 2005; published December 16, 2005.

REFERENCES

- Ben-Shem, A., Frolov, F., and Nelson, N.** (2003). Crystal structure of plant photosystem I. *Nature* **426**, 630–635.
- Bramley, P.M., Elmadfa, I., Kafatos, A., Kelly, F.J., Manios, Y., Roxborough, H.E., Schuch, W., Sheehy, P.J.A., and Wagner, K.-H.** (2000). Vitamin E. *J. Sci. Food Agric.* **80**, 913–938.
- Cheng, Z., Sattler, S., Maeda, H., Sakuragi, Y., Bryant, D.A., and DellaPenna, D.** (2003). Highly divergent methyltransferases catalyze a conserved reaction in tocopherol and plastoquinone synthesis in cyanobacteria and photosynthetic eukaryotes. *Plant Cell* **15**, 2343–2356.
- Collakova, E., and DellaPenna, D.** (2001). Isolation and functional analysis of homogentisate phytyltransferase from *Synechocystis* sp. PCC 6803 and *Arabidopsis*. *Plant Physiol.* **127**, 1113–1124.
- Collakova, E., and DellaPenna, D.** (2003). The role of homogentisate phytyltransferase and other tocopherol pathway enzymes in the regulation of tocopherol synthesis during abiotic stress. *Plant Physiol.* **133**, 930–940.
- Cunniff, P.A.,** ed (1990). Nomenclature rules for vitamin E (972.31). In *Official Methods of Analysis*, 15th ed. (Arlington, VA: AOAC International), pp. 1070–1071.
- Emanuelsson, O., Nielsen, H., and von Heijne, G.** (1999). ChloroP, a neural network-based method for predicting chloroplast transit peptides and their cleavage sites. *Protein Sci.* **8**, 978–984.
- Goffman, F.D., Velasco, L., and Becker, H.C.** (1999). Tocopherols accumulation in developing seeds and pods of rapeseed (*Brassica napus*). *Lipid-Fett* **101**, 400–403.
- Grusak, M.A., and DellaPenna, D.** (1999). Improving the nutrient composition of plants to enhance human nutrition and health. *Annu. Rev. Plant Physiol. Plant Mol. Biol.* **50**, 133–161.
- Heller, L., Orlean, P., and Adair, W.L., Jr.** (1992). *Saccharomyces cerevisiae sec59* cells are deficient in dolichol kinase activity. *Proc. Natl. Acad. Sci. USA* **89**, 7013–7016.
- Hofius, D., and Sonnewald, U.** (2003). Vitamin E biosynthesis: Biochemistry meets cell biology. *Trends Plant Sci.* **1**, 6–8.
- Hörtensteiner, S.** (1999). Chlorophyll breakdown in higher plants and algae. *Cell. Mol. Life Sci.* **56**, 330–347.
- IUPAC-IUP Joint Commission on Biochemical Nomenclature** (1982). Nomenclature of tocopherols and related compounds. Recommendation 1981. *Eur. J. Biochem.* **123**, 473–475.
- Jander, G., Norris, S.R., Rounsley, S.D., Bush, D.F., Levin, I.M., and Last, R.L.** (2002). *Arabidopsis* map-based cloning in the post-genome era. *Plant Physiol.* **129**, 440–450.
- Joo, C.N., Park, C.E., Kramer, J.K.G., and Kates, M.** (1973). Synthesis and acid hydrolysis of monophosphate and pyrophosphate esters of phytanol and phytol. *Can. J. Biochem.* **51**, 1527–1536.
- Kaneko, T., et al.** (1996). Sequence analysis of the genome of the unicellular cyanobacterium *Synechocystis* sp. strain PCC 6803. II. Sequence determination of the entire genome and assignment of potential protein-coding regions. *DNA Res.* **3**, 109–136.
- Kanwischer, M., Porfirova, S., Bergmüller, E., and Dörmann, P.** (2005). Alterations in tocopherol cyclase activity in transgenic and mutant plants of *Arabidopsis* affect tocopherol content, tocopherol composition, and oxidative stress. *Plant Physiol.* **137**, 713–723.
- Keller, P., Bouvier, F., D'Harlingue, A., and Camara, B.** (1998). Metabolic compartmentation of plastid prenyllipid biosynthesis. Evidence for the involvement of a multifunctional geranylgeranyl reductase. *Eur. J. Biochem.* **251**, 413–417.
- Kräutler, B.** (2002). Unravelling chlorophyll catabolism in higher plants. *Biochem. Soc. Trans.* **30**, 625–630.
- Krogh, A., Larsson, B., von Heijne, G., and Sonnhammer, E.L.L.** (2001). Predicting transmembrane protein topology with a hidden Markov model: Application to complete genomes. *J. Mol. Biol.* **305**, 567–580.
- Kumar, S., Tamura, K., Jakobsen, I.B., and Nei, M.** (2001). MEGA2: Molecular evolutionary genetics analysis software. *Bioinformatics* **17**, 1244–1245.
- Matile, P., Hörtensteiner, S., and Thomas, H.** (1999). Chlorophyll degradation. *Annu. Rev. Plant Physiol. Plant Mol. Biol.* **50**, 67–95.
- Moshiri, F., Chawla, A., and Maier, R.J.** (1991). Cloning, characterization, and expression in *Escherichia coli* of the genes encoding the cytochrome d oxidase complex from *Azotobacter vinelandii*. *J. Bacteriol.* **173**, 6230–6241.

- Nicholas, K.B., Nicholas, H.B., Jr., and Deerfield II, D.W.** (1997). GeneDoc: Analysis and visualization of genetic variation. *EMBnet.news* **4**, 1–4.
- Norris, S.R., Lincoln, K., Abad, M.S., Eilers, R., Hartsuyker, K., Kindle, K., Hirshberg, J., Karunanandaa, B., Moshiri, F., Stein, J.C., Valentin, H.E., and Venkatesh, T.V.** (2004). Plant genes for sequence homologs of phytol kinase of tocopherol biosynthesis and their use in engineering plant tocopherol profiles and drought resistance. International patent application WO 2004013312 A2.
- Norris, S.R., Shen, X., and DellaPenna, D.** (1998). Complementation of the *Arabidopsis* pds1 mutation with the gene encoding p-hydroxyphenylpyruvate dioxygenase. *Plant Physiol.* **117**, 1317–1323.
- Patterson, G.W., Hugly, S., and Harrison, D.** (1993). Sterols and phytol esters of *Arabidopsis thaliana* under normal and chilling temperatures. *Phytochemistry* **33**, 1381–1383.
- Peisker, C., Düggelin, T., Rentsch, D., and Matile, P.** (1989). Phytol and the breakdown of chlorophyll in senescent leaves. *J. Plant Physiol.* **135**, 428–432.
- Porfiriova, S., Bergmüller, E., Tropf, S., Lemke, R., and Dörmann, P.** (2002). Isolation of an *Arabidopsis* mutant lacking vitamin E and identification of a cyclase essential for all tocopherol biosynthesis. *Proc. Natl. Acad. Sci. USA* **99**, 12495–12500.
- Rippert, P., Scimemi, C., Dubald, M., and Matringe, M.** (2004). Engineering plant shikimate pathway for production of tocotrienol and improving herbicide resistance. *Plant Physiol.* **134**, 92–100.
- Rise, M., Cojocar, M., Gottlieb, H.E., and Goldschmidt, E.E.** (1989). Accumulation of α -tocopherol in senescing organs as related to chlorophyll degradation. *Plant Physiol.* **89**, 1028–1030.
- Röhmer, M.** (2003). Mevalonate-independent methylerythritol phosphate pathway for isoprenoid biosynthesis. Elucidation and distribution. *Pure Appl. Chem.* **75**, 375–388.
- Rontani, J.-F., Cuny, P., and Grossi, V.** (1996). Photodegradation of chlorophyll phytol chain in senescent leaves of higher plants. *Phytochemistry* **42**, 347–351.
- Rüdiger, W., Benz, J., and Guthoff, C.** (1980). Detection and partial characterization of activity of chlorophyll synthetase in etioplast membranes. *Eur. J. Biochem.* **109**, 193–200.
- Sattler, S.E., Cheng, Z., and DellaPenna, D.** (2004b). From *Arabidopsis* to agriculture: Engineering improved vitamin E content in soybean. *Trends Plant Sci.* **9**, 365–367.
- Sattler, S.E., Gilliland, L.U., Magallanes-Lundback, M., Pollard, M., and DellaPenna, D.** (2004a). Vitamin E is essential for seed longevity and for preventing lipid peroxidation during germination. *Plant Cell* **16**, 1419–1432.
- Savidge, B., Weiss, J.D., Wong, Y.-H.H., Lassner, M.W., Mitsky, T.A., Shewmaker, C.K., Post-Beittenmiller, D., and Valentin, H.E.** (2002). Isolation and characterization of tocopherol phytyltransferase genes from *Synechocystis* PCC 6803 and *Arabidopsis*. *Plant Physiol.* **129**, 321–333.
- Shibata, M., Tsuyama, M., Takami, T., Shimizu, H., and Kobayashi, Y.** (2004). Accumulation of menaquinones with incompletely reduced side chains and loss of α -tocopherol in rice mutants with alternations in the chlorophyll moiety. *J. Exp. Bot.* **55**, 1989–1996.
- Shintani, D., and DellaPenna, D.** (1998). Elevating the vitamin E content of plants through metabolic engineering. *Science* **282**, 2098–2100.
- Shpilyov, A.V., Zinchenko, V.V., Shestakov, S.V., Grimm, B., and Lokstein, H.** (2005). Inactivation of the geranylgeranyl reductase (*ChlP*) gene in the cyanobacterium *Synechocystis* sp. PCC 6803. *Biochim. Biophys. Acta* **1706**, 195–203.
- Soll, J., Kemmerling, M., and Schultz, G.** (1980). Tocopherol and plastoquinone synthesis in spinach chloroplasts subfractions. *Arch. Biochem. Biophys.* **204**, 544–550.
- Soll, J., and Schultz, G.** (1980). 2-Methyl-6-phytylquinol and 2,3-dimethyl-5-phytylquinol as precursors of tocopherol synthesis in spinach chloroplasts. *Phytochemistry* **19**, 215–218.
- Soll, J., Schultz, G., Joyard, J., Douce, R., and Block, M.A.** (1985). Localization and synthesis of prenylquinones in isolated outer and inner envelope membranes from spinach chloroplasts. *Arch. Biochem. Biophys.* **238**, 290–299.
- Soll, J., Schultz, G., Rüdiger, W., and Benz, J.** (1983). Hydrogenation of geranylgeraniol. *Plant Physiol.* **71**, 849–854.
- Tanaka, R., Oster, U., Kruse, E., Rüdiger, W., and Grimm, B.** (1999). Reduced activity of geranylgeranyl reductase leads to loss of chlorophyll and tocopherol and to partially geranylgeranylated chlorophyll in transgenic tobacco plants expressing antisense RNA for geranylgeranyl reductase. *Plant Physiol.* **120**, 695–704.
- Tatusov, R.L., Galperin, M.Y., Natale, D.A., and Koonin, E.V.** (2001). The COG database: A tool for genome-scale analysis of protein functions and evolution. *Nucleic Acids Res.* **29**, 22–28.
- Thai, L., Rush, J.S., Maul, J.E., Devarenne, T., Rodgers, D.L., Chappell, J., and Waechter, C.J.** (1999). Farnesol is utilized for isoprenoid biosynthesis in plant cells via farnesyl pyrophosphate formed by successive monophosphorylation reactions. *Proc. Natl. Acad. Sci. USA* **96**, 13080–13085.
- Thompson, J.D., Gibson, T.J., Plewniak, F., Jeanmougin, F., and Higgins, D.G.** (1997). The CLUSTAL X windows interface: Flexible strategies for multiple sequence alignment aided by quality analysis tools. *Nucleic Acids Res.* **25**, 4876–4882.
- Van Eenennaam, A.L., et al.** (2003). Engineering vitamin E content: From *Arabidopsis* mutant to soy oil. *Plant Cell* **15**, 3007–3019.
- Volkman, J.K., and Maxwell, J.R.** (1986). Acyclic isoprenoids as biological markers. In *Biological Markers in the Sedimentary Record*, R.B. Johns, ed (Amsterdam, The Netherlands: Elsevier), pp. 1–46.
- Williams, J.G.K.** (1988). Construction of specific mutations in photosystem II photosynthetic reaction center by genetic engineering methods in *Synechocystis* 6803. In *Methods in Enzymology*, A. Glazer, ed (New York: Academic Press), 766–778.
- Zimmermann, P., Hirsch-Hoffmann, M., Hennig, L., and Gruissem, W.** (2004). GENEVESTIGATOR. *Arabidopsis* microarray database and analysis toolbox. *Plant Physiol.* **136**, 2621–2632.

The Arabidopsis vitamin E pathway gene5-1 Mutant Reveals a Critical Role for Phytol Kinase in Seed Tocopherol Biosynthesis

Henry E. Valentin, Kim Lincoln, Farhad Moshiri, Pamela K. Jensen, Qungang Qi, Tyamagondlu V. Venkatesh, Balasulojini Karunanandaa, Susan R. Baszis, Susan R. Norris, Beth Savidge, Kenneth J. Gruys and Robert L. Last

PLANT CELL 2006;18;212-224; originally published online Dec 16, 2005;
DOI: 10.1105/tpc.105.037077

This information is current as of February 10, 2010

Supplemental Data	http://www.plantcell.org/cgi/content/full/tpc.105.037077/DC1
References	This article cites 47 articles, 24 of which you can access for free at: http://www.plantcell.org/cgi/content/full/18/1/212#BIBL
Permissions	https://www.copyright.com/ccc/openurl.do?sid=pd_hw1532298X&iissn=1532298X&WT.mc_id=pd_hw1532298X
eTOCs	Sign up for eTOCs for <i>THE PLANT CELL</i> at: http://www.plantcell.org/subscriptions/etoc.shtml
CiteTrack Alerts	Sign up for CiteTrack Alerts for <i>Plant Cell</i> at: http://www.plantcell.org/cgi/alerts/ctmain
Subscription Information	Subscription information for <i>The Plant Cell</i> and <i>Plant Physiology</i> is available at: http://www.aspb.org/publications/subscriptions.cfm