

Arabidopsis OST1 Protein Kinase Mediates the Regulation of Stomatal Aperture by Abscisic Acid and Acts Upstream of Reactive Oxygen Species Production

Anna-Chiara Mustilli,^{a,1} Sylvain Merlot,^{a,2} Alain Vavasseur,^b Francesca Fenzi,^a and Jérôme Giraudat^a

^a Institut des Sciences du Végétal, Centre National de la Recherche Scientifique, Unité Propre de Recherche 2355, 91190 Gif-sur-Yvette, France

^b Commissariat à l'Énergie Atomique, Direction des Sciences du Vivant, Laboratoire des Échanges Membranaires et Signalisation, F-13108 St. Paul lez Durance Cedex, France

During drought, the plant hormone abscisic acid (ABA) triggers stomatal closure, thus reducing water loss. Using infrared thermography, we isolated two allelic *Arabidopsis* mutants (*ost1-1* and *ost1-2*) impaired in the ability to limit their transpiration upon drought. These recessive *ost1* mutations disrupted ABA induction of stomatal closure as well as ABA inhibition of light-induced stomatal opening. By contrast, the *ost1* mutations did not affect stomatal regulation by light or CO₂, suggesting that *OST1* is involved specifically in ABA signaling. The *OST1* gene was isolated by positional cloning and was found to be expressed in stomatal guard cells and vascular tissue. In-gel assays indicated that *OST1* is an ABA-activated protein kinase related to the *Vicia faba* ABA-activated protein kinase (AAPK). Reactive oxygen species (ROS) were shown recently to be an essential intermediate in guard cell ABA signaling. ABA-induced ROS production was disrupted in *ost1* guard cells, whereas applied H₂O₂ or calcium elicited the same degree of stomatal closure in *ost1* as in the wild type. These results suggest that *OST1* acts in the interval between ABA perception and ROS production. The relative positions of *ost1* and the other ABA-insensitive mutations in the ABA signaling network (*abi1-1*, *abi2-1*, and *gca2*) are discussed.

INTRODUCTION

Stomatal pores located in the plant epidermis control the uptake of CO₂ for photosynthesis and the loss of water through transpiration. The closing and opening of the pore result from the osmotic shrinking and swelling, respectively, of the two surrounding guard cells. These guard cells integrate a variety of environmental and endogenous signals to tightly regulate the stomatal aperture (Willmer and Fricker, 1996). In response to drought, plants synthesize the hormone abscisic acid (ABA), which triggers stomatal closure, thus reducing transpirational water loss. ABA acts directly on guard cells and induces stomatal closure via the efflux of potassium and anions from guard cells and the removal of organic osmolytes (MacRobbie, 1998; Schroeder et al., 2001).

Pharmacological and cell biological studies have led to major advances in our understanding of the mechanisms of

ABA signal transduction in stomatal guard cells (Blatt, 2000; Assmann and Wang, 2001; Schroeder et al., 2001). In particular, substantial evidence indicates that the ABA regulation of plasma membrane ion channels is mediated by increases in cytosolic Ca²⁺. ABA increases cytosolic Ca²⁺ by inducing both Ca²⁺ release from intracellular stores and Ca²⁺ influx from the extracellular space. Additional second messengers that contribute to ABA-induced stomatal closure include increases in cytoplasmic pH and production of phosphatidic acid.

More recently, a number of mutations that affect ABA signaling in *Arabidopsis* guard cells were characterized. The type-2C protein phosphatases ABI1 and ABI2 were identified initially on the basis of the ABA-insensitive *abi1-1* and *abi2-1* dominant mutations (Koornneef et al., 1984; Leung et al., 1994, 1997; Meyer et al., 1994). However, subsequent characterization of loss-of-function alleles indicated that ABI1 and ABI2 are negative regulators of ABA action (Gosti et al., 1999; Merlot et al., 2001). Recessive mutations leading to ABA-supersensitive stomatal closing identified additional negative regulators of ABA signaling in guard cells. These include the farnesyltransferase β -subunit ERA1 (Cutler et al., 1996; Pei et al., 1998), the mRNA cap binding protein ABH1 (Hugouvieux et al., 2001), and the Sm-like snRNP protein SAD1 (Xiong et al., 2001).

¹ To whom correspondence should be addressed. E-mail achmustilli@libero.it; fax 33-1-69823695.

² Current address: Section of Cell and Developmental Biology and Center for Molecular Genetics, University of California, San Diego, 9500 Gilman Drive, La Jolla, CA 92093-0634.

Article, publication date, and citation information can be found at www.plantcell.org/cgi/doi/10.1105/tpc.007906.

Conversely, the recessive *gca2* mutation inhibits ABA-induced stomatal closure, indicating that GCA2 is a positive regulator of ABA signaling (Pei et al., 2000). The GCA2 gene has not been cloned. Similarly, disruption of the *GPA1* gene, which encodes a heterotrimeric GTP binding protein α -subunit, impairs the ABA inhibition of stomatal opening (Wang et al., 2001). Finally, dominant mutations in the syntaxin-related protein Nt-SYR1 from tobacco (Leyman et al., 1999), the AAPK protein kinase from *Vicia faba* (Li et al., 2000), and the small GTPase AtRAC1 from Arabidopsis (Lemichez et al., 2001) inhibit ABA-induced stomatal closure. The relative positions of these various signaling elements are not firmly established, and our knowledge of the ABA signaling cascades remains fragmentary. Nevertheless, the emerging consensus is that the ABA regulation of stomatal aperture is mediated by a ramified network made up of different signaling modules (Hetherington, 2001; Schroeder et al., 2001).

To gain further insights into ABA signaling in guard cells, we developed a novel genetic screen for Arabidopsis mutants with altered stomatal responses to drought. Transpiration causes leaf cooling because evaporation of water is associated with heat loss. Leaf surface temperature can be measured continuously and nondestructively using infrared thermography, which provides a convenient indicator of the transpiration of individual plants (Raskin and Ladyman, 1988; Jones, 1999). We used infrared thermal imaging to screen for Arabidopsis mutants that displayed a reduced ability to close their stomata in response to drought stress and hence that appeared colder than the wild type (Merlot et al., 2002). Two of the mutants recovered correspond to a novel locus designated *Open Stomata1* (*OST1*).

We report here the characterization of these recessive *ost1* mutants and of the corresponding gene. Stomata of the *ost1* mutants were insensitive to ABA but were responsive to light and CO₂. The *OST1* gene was isolated and shown to encode an ABA-activated protein kinase related to the *V. faba* AAPK. We investigated the place of OST1 in the guard cell ABA signaling network. Our results suggest that OST1 acts in the interval between ABA perception and the production of reactive oxygen species (ROS). We propose a model of this ABA signaling pathway that integrates the present data on *ost1* and previous results on other ABA-insensitive mutants.

RESULTS

Isolation of *ost1* Mutants

The *ost1* mutants were identified in a screen based on thermal imaging of drought-stressed plants (Merlot et al., 2002). Plantlets derived from an ethyl methanesulfonate-mutagenized population in the Arabidopsis accession Landsberg *erecta* (*Ler*) were subjected to drought stress. These plantlets then were analyzed by infrared thermography, and the individuals that displayed a lower leaf temperature than that

of the wild type were selected. Among several mutants recovered during this screen, two corresponded to independent recessive alleles of a novel locus that was called *OST1*. Upon drought, the leaf temperature of *ost1-1* and *ost1-2* plantlets was $\sim 1^\circ\text{C}$ lower than that of wild-type plantlets (Figure 1A). This temperature difference reflected the inability of *ost1* leaves to limit their transpirational water loss in response to water stress (Figure 1B).

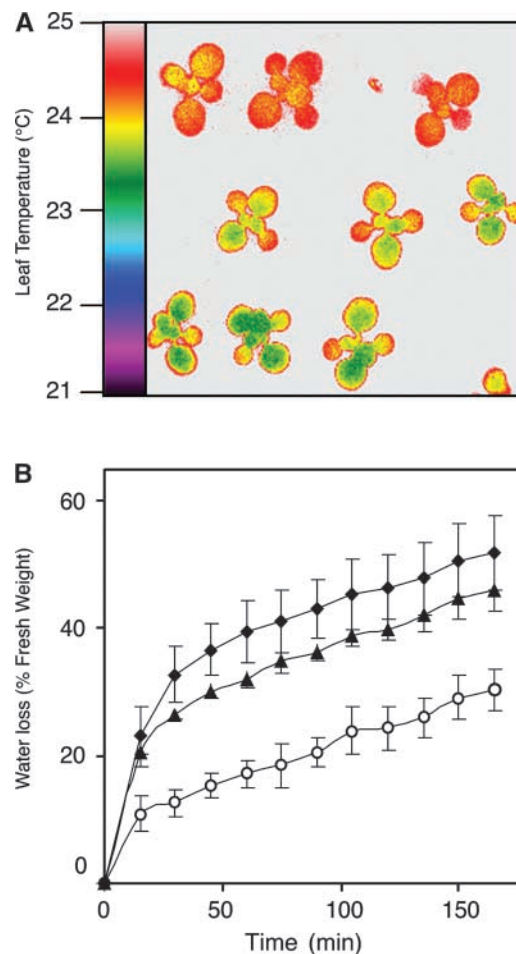


Figure 1. *ost1* Mutants Are Defective in the Regulation of Transpiration upon Water Stress.

(A) False-color infrared image of drought-stressed plantlets. Twelve-day-old *Ler* wild-type (top row), *ost1-1* (middle row), and *ost1-2* (bottom row) plantlets were subjected to drought for 4 days. As calculated from the quantification of infrared images, the leaf temperatures were $24.7 \pm 0.18^\circ\text{C}$ for the wild type, $23.66 \pm 0.24^\circ\text{C}$ for *ost1-1*, and $23.21 \pm 0.21^\circ\text{C}$ for *ost1-2* (means \pm SD of measurements on ~ 5000 square pixels).

(B) Kinetics of water loss from detached leaves of the wild type (open circles), *ost1-1* (closed diamonds), and *ost1-2* (closed triangles). Water loss is expressed as the percentage of initial fresh weight. Values are means \pm SD of four samples of three leaves each.

***ost1* Mutations Impair the ABA Regulation of Stomatal Aperture**

The responsiveness of *ost1* stomata to various stimuli was analyzed *in vitro* using isolated epidermal peels. Preopened *ost1* stomata failed to close in response to ABA (Figure 2A), which is consistent with the inability of *ost1* plants to reduce water loss upon drought. By contrast, *ost1* stomata closed to the same extent as the wild type in response to darkness (Figure 2B). Similarly, the *ost1* mutations had no effect on the ability of preclosed stomata to open in response to light (Figure 2C) or CO₂-free air (Figure 2D). However, the *ost1* mutants were impaired in the ABA inhibition of light-induced stomatal opening (Figure 2C). These data indicate that the *ost1* mutations do not cause a general defect in stomatal functioning but specifically disrupt ABA signaling in guard cells.

When grown under well-watered conditions, the *ost1* plants did not display any visible phenotypic alteration. Moreover, the *ost1* mutations did not affect the degree of seed dormancy or the sensitivity of seed germination to inhibition by exogenous ABA (data not shown), indicating that *OST1* does not control ABA responsiveness in seeds.

Map-Based Cloning of the *OST1* Gene

To genetically map the *OST1* gene, homozygous *ost1-2* mutant plants in the *Ler* accession were crossed to wild-type plants in the Columbia accession. The resulting F1 plants were allowed to self. From the segregating F2 population, *ost1* mutants were identified by thermal imaging as colder individuals under drought conditions. A mapping survey of polymorphism markers distributed throughout the five Arabidopsis chromosomes placed the *OST1* locus on chromosome 4, between markers AG and nga1139. New simple sequence length polymorphism markers in this region were designed using the Arabidopsis polymorphism database generated by Cereon Genomics (Cambridge, MA; <http://www.arabidopsis.org/cereon/>). Mapping of 1024 chromosomes narrowed *OST1* to the 119-kb region between markers CER449763 on BAC clone F1715 and CER451680 on BAC clone F28A23 (Figure 3A).

We examined the sequence of this genomic region for genes predicted to encode signal transduction elements. Among them, the protein kinase gene *At4g33950* on BAC clone F1715 was considered a likely candidate. This gene was found by sequence analysis to be mutant in both *ost1-1* and *ost1-2* (Figure 3B). Compared with wild-type *Ler*, *ost1-1* contains a G-to-A change 1486 bp downstream of the predicted translation initiation codon that disrupts the acceptor splice site of intron 6. *ost1-2* contains a G-to-A change at nucleotide 97, which converts Gly-33 to Arg. Finally, transformation with a 4.5-kb genomic fragment encompassing *At4g33950* restored the wild-type phenotype in both *ost1-1* and *ost1-2* (Figure 3C). These data demonstrate that *At4g33950* corresponds to *OST1*.

OST1 cDNA was obtained by reverse transcriptase-PCR (RT-

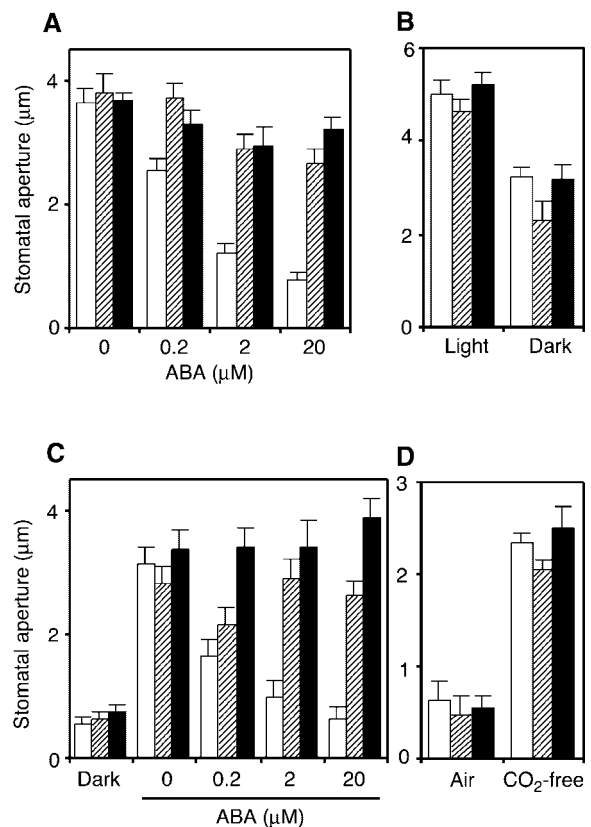


Figure 2. *ost1* Mutations Impair the ABA Induction of Stomatal Closing and the ABA Inhibition of Stomatal Opening.

Stomatal apertures were measured on epidermal peels of the wild type (white columns), *ost1-1* (hatched columns), and *ost1-2* (black columns). Values are means \pm SE ($n = 60$).

(A) ABA-induced stomatal closing. Stomata were preopened in the light for 3 h and then incubated in the indicated concentrations of ABA for 3 h in the light.

(B) Darkness-induced stomatal closing. Stomata were preopened in the light for 2.5 h and then incubated in darkness for 2.5 h.

(C) ABA inhibition of light-induced stomatal opening. Stomata were preclosed in darkness and then incubated for 2.5 h in the light at the indicated concentrations of ABA.

(D) Induction of stomatal opening by CO₂-free air. Stomata were preclosed in darkness in normal air and then incubated for 3 h in CO₂-free air in darkness.

PCR) and sequenced. Comparison of the genomic and cDNA sequences showed that *OST1* consists of 10 exons (Figure 3B). The wild-type *OST1* sequence has been deposited in GenBank.

***OST1* Kinase-Like Proteins**

OST1 encodes a 362-amino acid protein with a predicted molecular mass of 41 kD. The N-terminal region of the *OST1*

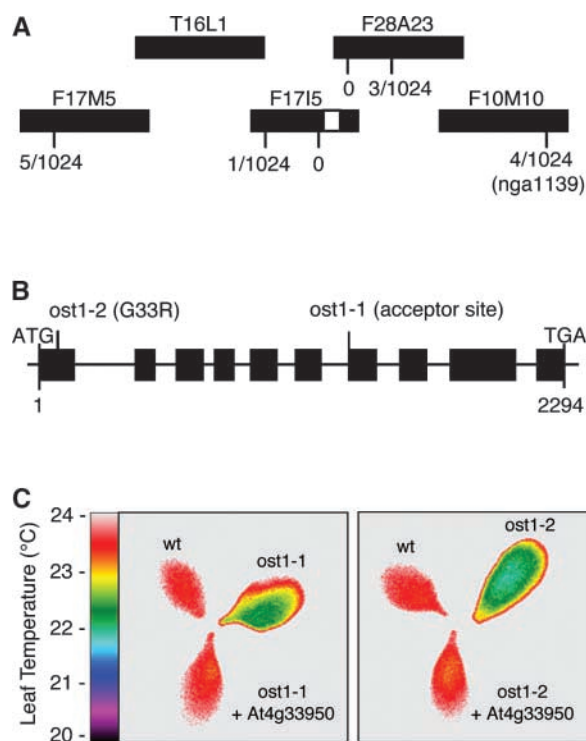


Figure 3. Map-Based Cloning of the *OST1* Gene.

(A) Genetic mapping of 1024 chromosomes localized *OST1* (white rectangle) to the 119-kb region between markers CER449763 on BAC F17I5 and CER451680 on BAC F28A23.

(B) *OST1* consists of 10 exons (rectangles). *ost1-1* is a G-to-A change at nucleotide 1486 that disrupts the acceptor splice site of intron 6. *ost1-2* is a G-to-A change at nucleotide 97 that converts Gly-33 to Arg.

(C) False-color infrared image of detached leaves from the *Ler* wild type (wt), *ost1-1* and *ost1-2* mutants, and *ost1-1* and *ost1-2* mutants transformed with the wild-type *At4g33950* gene. Functional complementation was observed in eight independent transgenic lines.

protein (amino acids 1 to 297) presents all of the conserved features of the catalytic domains of protein Ser/Thr kinases (Figure 4A). In particular, the *ost1-2* mutation affects an invariant residue required for ATP binding and thus is predicted to abolish *OST1* kinase activity (Hanks and Quinn, 1991).

Database searches revealed that *OST1* shares between 67 and 80% amino acid identity with nine other predicted protein kinases from *Arabidopsis*. We named the members of this kinase subfamily OSKL for *OST1* kinase-like proteins (Figure 4A). All of these protein sequences but OSKL5 and OSKL10 are supported by full-length cDNA sequences present in the databases. OSKL7 and OSKL8 were previously designated ASK1 and ASK2, respectively, by Park et al. (1993). OSKL2 and OSKL3 were previously designated

ATHPROKINB and ATHPROKINA, respectively. The OSKL proteins contain an N-terminal kinase domain similar to that of SNF1/AMPK (Hardie et al., 1998) and a novel C-terminal domain that presumably is regulatory. This group of plant protein kinases also has been designated subfamily 2 of SNF1-related protein kinases (SnRK2) by Hardie (1999). To date, no biological function has been assigned to any of the *Arabidopsis* *OSKL2* to *OSKL10* genes.

OST1 also is similar to kinases from various other plant species, including the *V. faba* AAPK (Li et al., 2000) and barley PKABA (Gomez-Cadenas et al., 1999) proteins, which have been proposed to act in ABA signaling (Figure 4). In particular, the AAPK protein kinase has been shown by in-gel assays to be activated by ABA in *V. faba* guard cell protoplasts (Li and Assmann, 1996; Mori and Muto, 1997).

Expression Pattern of *OST1*

Using RT-PCR analysis, the *OST1* mRNA was detected in leaves, flowers, stems, and roots (Figure 5A). The specificity of the oligonucleotides used for RT-PCR was tested on *OSKL2* and *OSKL3* cDNAs (Figure 5B). Characterization of transgenic plants harboring a transcriptional fusion between the β -glucuronidase (GUS) reporter gene and the *OST1* promoter (*pOST1::GUS*) further indicated that in leaves, *OST1* expression is confined to guard cells and the vascular system (Figures 5C and 5D). In agreement with this observation, the *OST1* mRNA was detected by RT-PCR in guard cell protoplasts but not in mesophyll cell protoplasts (Figure 5A). *pOST1::GUS* expression also was detected in the guard cells present in stems and flower sepals (data not shown) and in the root vascular system (Figure 5E).

ABA treatment had no detectable effect on *OST1* mRNA abundance (Figure 5A) or on the level of *pOST1::GUS* activity (data not shown), indicating that *OST1* expression is not regulated by ABA.

OST1 Kinase Is Activated by ABA

A recombinant *OST1* protein was produced in *Escherichia coli* and migrated at the expected molecular mass upon gel electrophoresis. However, this protein displayed no detectable kinase activity in vitro (data not shown), suggesting that *OST1* might be active only upon stimulation of the ABA signaling cascade in planta. A similar result in vitro also was observed in *V. faba* AAPK (Li et al., 2000). Based on *OST1* expression patterns, protein extracts were prepared from *Arabidopsis* root and guard cell protoplasts and were analyzed by in-gel protein kinase assays. In both roots and guard cell protoplasts from wild-type *Ler* plants, a 42-kD band with protein kinase activity was enhanced markedly in response to ABA (Figure 6A). This band also was observed when calcium was replaced by EGTA in the assay (Figure 6B). The apparent molecular mass of this kinase closely cor-

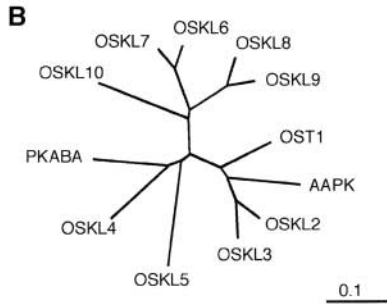
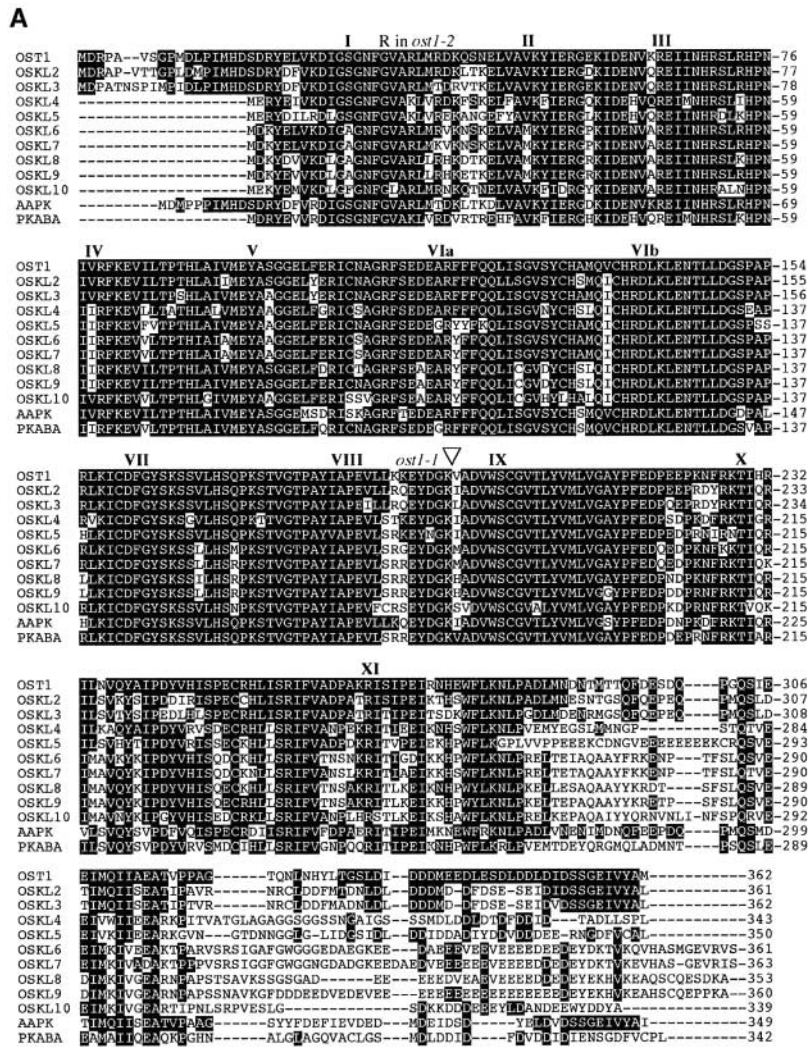


Figure 4. Structure of the OST1 Protein.

(A) Alignment of the predicted amino acid sequences of the 10 members of the Arabidopsis OSKL family, *V. faba* AAPK, and barley PKABA. Residues conserved between OST1 and at least one other sequence are shaded black. Conserved subdomains of the protein kinase family are indicated by roman numerals. Positions of the *ost1* mutations are shown. Dashed lines represent spaces that were introduced to maximize alignment. Arabidopsis Genome Initiative identification numbers of the OSKL family sequences are as follows: OST1 (At4g33950), OSKL2 (At5g66880), OSKL3 (At3g50500), OSKL4 (At1g78290), OSKL5 (At4g40010), OSKL6 (At1g60940), OSKL7 (At1g10940), OSKL8 (At5g08590), OSKL9 (At5g63650), and OSKL10 (At2g23030).

(B) Relation tree of OSKL proteins from Arabidopsis and other plant species.

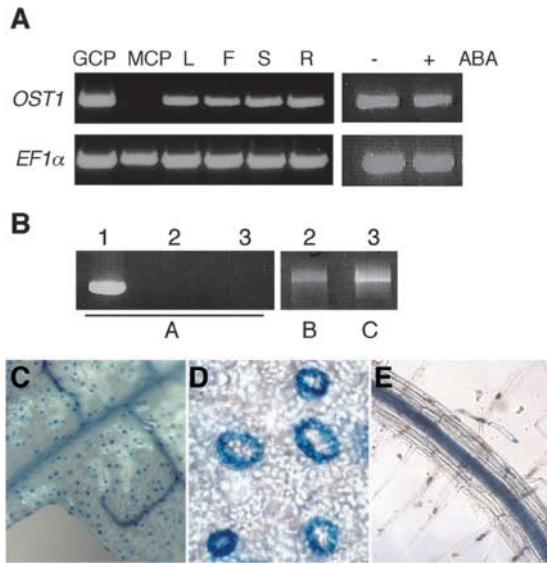


Figure 5. Expression Pattern of *OST1*.

(A) RT-PCR analysis of *OST1* mRNA expression in guard cell protoplasts (GCP), mesophyll cell protoplasts (MCP), leaf (L), flower (F), stem (S), and root (R) from 4-week-old plants and aerial parts of 2-week-old seedlings grown in vitro that were treated for 1 h with 10 μ M ABA (+) or solvent control (-). *EF1 α* was used as an internal standard for cDNA amounts.

(B) PCR amplification of *OST1* (lane 1), *OSKL2* (lane 2), and *OSKL3* (lane 3) cDNAs with oligonucleotides specific for *OST1* (A), *OSKL2* (B), and *OSKL3* (C).

(C) Expression of p*OST1*::GUS in leaf tissue.

(D) Expression of p*OST1*::GUS in leaf guard cells.

(E) Expression of p*OST1*::GUS in root tissue.

relates with the theoretical molecular mass of *OST1*. Furthermore, the ABA-activated 42-kD band was absent from extracts of the *ost1-2* mutant (Figure 6A). These data indicate that, like the *V. faba* AAPK, *OST1* is an ABA-activated Ca^{2+} -independent protein kinase (Li et al., 2000). Furthermore, we observed a band with an apparent molecular mass of <42 kD in root extracts, which seems to be down-regulated by ABA and calcium dependent. Although this band seems not to have a direct correlation with the *ost1* phenotype, it needs further investigation.

***OST1* Acts Upstream of ROS Production**

ROS emerged recently as an essential second messenger in ABA signaling (Guan et al., 2000; Pei et al., 2000; Zhang et al., 2001). In particular, ABA-induced stomatal closure involves the production of ROS that activate plasma membrane Ca^{2+} channels that mediate Ca^{2+} influx (Pei et al.,

2000; Murata et al., 2001). ROS levels were analyzed in guard cells using the fluorescent dye 2',7'-dichlorofluorescein diacetate. In agreement with previous studies (Pei et al., 2000; Murata et al., 2001), the relative fluorescence emission increased after treatment of wild-type guard cells with ABA (Figure 7A). By contrast, ABA did not increase ROS levels in *ost1* guard cells (Figure 7A).

To investigate the physiological relevance of this impairment of ABA-induced ROS production in *ost1*, we determined whether this mutation could be bypassed by an experimental increase of H_2O_2 . As shown in Figure 7B, externally applied H_2O_2 elicited the same degree of stomatal closure in *ost1* as in the wild type. Likewise, increased extracellular calcium induced similar stomatal closing in the wild type and in *ost1* (Figure 7C). Similar results have been obtained for the inhibition of stomatal opening mediated by H_2O_2 and calcium (data not shown). These data support the idea that the *ost1* mutation disrupts ABA signaling upstream of ROS production.

Like *ost1*, the ABA-insensitive *abi1-1* mutation impairs ABA-induced ROS production and stomatal closure (Murata et al., 2001). In-gel kinase assays showed that ABA activation of the 42-kD *OST1* kinase was inhibited in *abi1-1* (Figure 7D). These data indicate that *OST1* kinase acts downstream of *ABI1* in the signaling cascade linking ABA to ROS production.

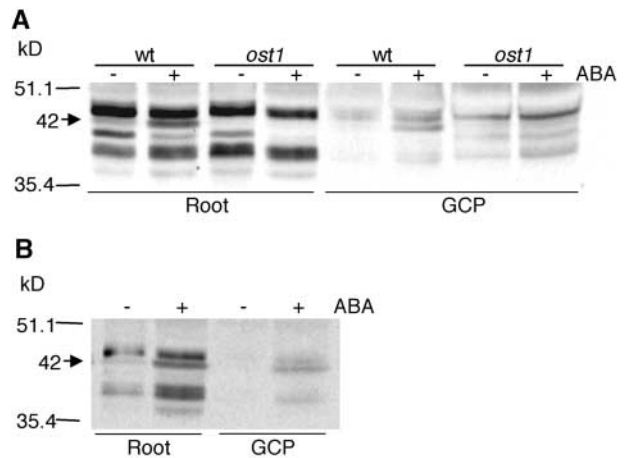


Figure 6. *OST1* Is an ABA-Activated Protein Kinase.

(A) Protein kinase activities of root and guard cell protoplasts (GCP) from the *Ler* wild type (wt) and *ost1-2* mutant were analyzed by an in-gel assay using Histone III-S as the substrate. Root extracts were obtained from 2-week-old seedlings treated for 3 h with 10 μ M ABA (+) or solvent control (-). Guard cell protoplasts were treated for 20 min with 30 μ M ABA (+) or solvent control (-). Sizes of molecular mass markers are shown at left. The arrow indicates the position of the ABA-activated 42-kD kinase.

(B) Roots and guard cell protoplast extracts from the *Ler* wild type were analyzed by replacing CaCl_2 with EGTA in the kinase buffer.

DISCUSSION

Our characterization of *ost1* recessive mutants provides genetic evidence that the OST1 protein kinase is an essential element of the ABA signaling pathway that mediates stomatal regulation in response to drought. The role of OST1 in guard cells is consistent with pharmacological studies showing that phosphorylation events are central positive regulators in ABA-induced stomatal closure (MacRobbie, 1998; Schroeder et al., 2001).

Arabidopsis OST1 shares 79% amino acid identity with *V. faba* AAPK (Li et al., 2000). AAPK, also called ABR kinase by Mori and Muto (1997), is activated by ABA (Li and Assmann, 1996; Mori and Muto, 1997). AAPK activity was detected in guard cell protoplasts but not in leaf epidermal or mesophyll cell protoplasts (Li and Assmann, 1996; Mori and Muto, 1997). Transient transformation of *V. faba* guard cells with a dominant-negative form of AAPK impaired ABA-induced stomatal closing (Li et al., 2000). All of these data are consistent with the present results on OST1. It is unknown whether any OSKL other than OST1 is expressed in Arabidopsis guard cells. However, *ost1* guard cells are essentially insensitive to ABA, suggesting that no other OSKLs have an overlapping role with OST1 in stomatal regulation. Hence, Arabidopsis OST1 and *V. faba* AAPK most likely are true functional orthologs.

The recessive *ost1* mutations and the dominant-negative form of AAPK (Li et al., 2000) have largely concordant effects on stomatal regulation in Arabidopsis and *V. faba*, respectively. In both cases, ABA-induced stomatal closure was impaired, whereas closure elicited by darkness and opening elicited by light were unaffected. Similarly, *ost1* mutations had no effect on stomatal opening in response to CO₂-free air, and dominant AAPK had no effect on stomatal closure induced by increased CO₂. Surprisingly, however, the dominant form of AAPK had no effect on the ABA inhibition of light-induced stomatal opening (Li et al., 2000), whereas this ABA response clearly was abolished in the *ost1* mutants. It is unclear to what extent these conflicting observations may result from differences between the experimental strategies used (loss-of-function *ost1* mutations versus overexpression of a dominant form of AAPK) or from differences between the ABA signaling networks in Arabidopsis and *V. faba* guard cells. In any case, although the results with the dominant AAPK suggested that ABA promotion of stomatal closure and ABA inhibition of stomatal opening may use different signaling cascades (Li et al., 2000), OST1 clearly is required for both of these ABA responses.

Like *ost1*, the *abi1-1*, *abi2-1*, and *gca2* mutations impair ABA-induced stomatal closure in Arabidopsis. As illustrated in Figure 8, the three latter mutations were shown recently to affect a signaling cascade that involves ABA-induced ROS production and ROS activation of plasma membrane Ca²⁺ channels that mediate Ca²⁺ influx (Pei et al., 2000;

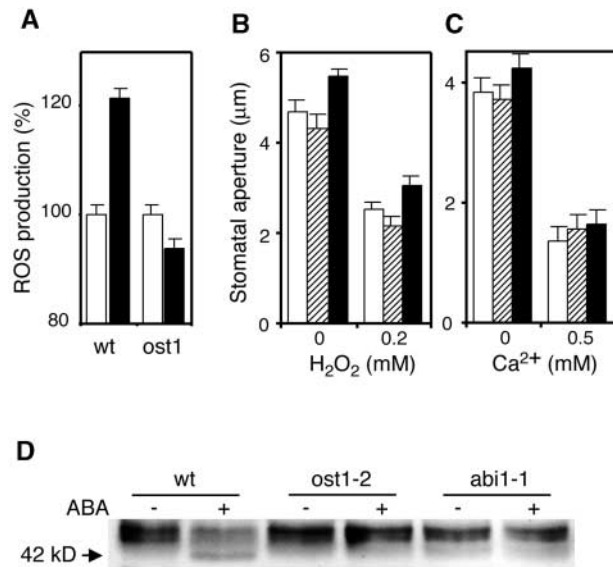


Figure 7. OST1 Acts Upstream of ROS Production.

(A) ABA-induced ROS production. Changes in ROS levels were analyzed by measuring 2',7'-dichlorofluorescein diacetate fluorescence levels in guard cells of the *Ler* wild type (wt) and *ost1-2* after treatment with 50 μM ABA (black columns) or solvent control (white columns). Values are means ± SE (*n* = 58).

(B) H₂O₂-induced stomatal closing. Stomatal apertures were measured on epidermal peels of the wild type (white columns), *ost1-1* (hatched columns), and *ost1-2* (black columns). Stomata were preopened in the light for 2 h in the presence of 0.1 mM EGTA and then incubated for 2 h in 0.2 mM CaCl₂, 0.1 mM EGTA, and the indicated concentrations of H₂O₂ (Pei et al., 2000). Values are means ± SE (*n* = 60).

(C) Extracellular Ca²⁺-induced stomatal closing. Stomatal apertures were measured on epidermal peels of the wild type (white columns), *ost1-1* (hatched columns), and *ost1-2* (black columns). Stomata were preopened in the light for 2 h and then incubated in the indicated concentrations of extracellular Ca²⁺ for 2 h. Values are means ± SE (*n* = 60).

(D) OST1 kinase activity. In-gel kinase assay of extracts from roots of the *Ler* wild type, *ost1-2*, and *abi1-1* treated for 3 h with 10 μM ABA (+) or solvent control (-). The arrow indicates the position of the ABA-activated 42-kD kinase.

Murata et al., 2001). Our results suggest that this same ABA signaling pathway is inhibited by *ost1* mutation. ABA-induced ROS production was not affected in *abi2-1* and *gca2*, but the stomata of these two mutants failed to close in response to externally applied H₂O₂ (Pei et al., 2000; Murata et al., 2001). These data suggest that *ABI2* and *GCA2* act downstream of ROS production. By contrast, both *ost1* and *abi1-1* impaired ABA-induced ROS production without affecting the ability of stomata to close in response to H₂O₂ or extracellular calcium (Allen et al., 1999; Murata et al., 2001). These results indicate that *ABI1* and *OST1* act upstream of ROS production. Finally, ABA activation of the OST1 kinase

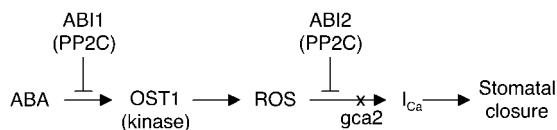


Figure 8. Model for the Position of OST1 in the ABA Signaling Cascade.

This minimal linear model integrates the present results on *ost1* mutants with previous data on *gca2* (Pei et al., 2000) and *abi1* and *abi2* mutants (Murata et al., 2001). OST1 is an ABA-activated protein kinase. The protein phosphatases 2C (PP2C) ABI1 and ABI2 are negative regulators of ABA action. The *GCA2* gene has not been cloned. The relative order of ABI2 and the *gca2* mutation is purely speculative. I_{Ca} indicates cytosolic calcium increase.

was impaired in *abi1-1*, suggesting that OST1 acts between ABI1 and ROS production. These various sets of observations are summarized in the minimal model shown in Figure 8.

The dominant *abi1-1* and *abi2-1* mutations decrease ABA responsiveness. However, characterization of loss-of-function mutant alleles (Gosti et al., 1999; Merlot et al., 2001) and overexpression studies (Sheen, 1998) support the notion that the wild-type ABI1 and ABI2 phosphatases are negative regulators of ABA signaling. By contrast, the OST1 protein kinase is a positive regulator of ABA action. Thus, it is intriguing that the OST1 kinase and ABI1 phosphatase seem to have antagonistic effects on the pathway that mediates the ABA activation of ROS production. Identifying and comparing the respective substrates of OST1 and ABI1 will be an important step in understanding the molecular basis of the genetic interactions summarized in Figure 8. Recently, an AAKP-interacting protein (AKIP1) was identified and shown to be implicated in the ABA regulation of post-transcriptional RNA metabolism (Li et al., 2002). It will be intriguing to determine whether a putative OST1-interacting protein in *Arabidopsis* plays a similar role to AKIP.

Unlike other guard cell ABA signaling mutants (Koornneef et al., 1984; Cutler et al., 1996; Pei et al., 2000; Hugouvieux et al., 2001; Xiong et al., 2001), *ost1* displays a wild-type ABA responsiveness in seeds. This is consistent with the fact that no *OST1* expression was detected in wild-type *Arabidopsis* seeds. However, the *OST1* homolog *PKABA* seems to participate in ABA signaling in barley grain. Unlike *OST1*, the *PKABA* mRNA is upregulated by ABA (Gomez-Cadenas et al., 1999). Constitutive expression of *PKABA* in aleurone cells mimicked the ABA repression of genes such as α -amylase (Gomez-Cadenas et al., 1999, 2001). These data raise the intriguing possibility that OSKs distinct from OST1 may mediate ABA signaling in *Arabidopsis* seeds. Potential candidates include OSK2 and OSK3, because corresponding cDNAs were isolated from developing seed libraries. It will be interesting to determine which OSKs contribute to ABA signaling in cell types other than guard cells and whether these OSKs are

involved in similar functional modules despite the diversity of responses elicited by ABA in distinct organs and tissues.

METHODS

Plant Material and Culture Conditions

The *ost1* (Merlot et al., 2002) and *abi1-1* (Koornneef et al., 1984) mutants are derived from the *Arabidopsis thaliana* accession Landsberg *erecta* (Ler). Plants were grown routinely in a greenhouse (22°C with a 16-h photoperiod) on soil irrigated with mineral nutrients. For aseptic growth, seeds were surface-sterilized and plated on a medium containing the inorganic salts of Murashige and Skoog (1962) at half concentrations, 100 mg/L myoinositol, 1 mg/L thiamine-HCl, 0.5 mg/L nicotinic acid, 0.5 mg/L pyridoxine-HCl, 1% Suc, 0.8% agar, and 2.5 mM Mes-KOH, pH 5.7. For abscisic acid (ABA) induction, 2-week-old seedlings were treated with 10 μ M ABA (mixed isomers; Sigma) diluted from 10 mM stock solutions prepared in ethanol; equivalent volumes of ethanol were included in the ABA-free controls.

Thermal Imaging

Thermal imaging of drought-stressed plantlets was performed as described previously (Merlot et al., 2002). In brief, plantlets were first grown under well-watered conditions (21°C, 60 to 70% RH, 16-h photoperiod) for approximately 1 week. Drought stress then was initiated by withholding watering and transferring the pots to a drier atmosphere (24°C, 50% RH, 16-h photoperiod). Thermal images were obtained using a Thermacam PM250 infrared camera (Inframetrics, North Billerica, MA). Images were saved on a Personal Computer Memory Card International Association card and were analyzed subsequently on a Macintosh computer using version 1.56 of the public domain image-analysis program NIH Image (<http://rsb.info.nih.gov/nih-image/>).

Stomatal Aperture Bioassays

Leaves from 4- to 5-week old plants (grown in 8 h of light at 22°C and 16 h of darkness at 20°C; 70% RH) were harvested in darkness at the end of the night. Paradermal sections of abaxial epidermis obtained in dim green light were incubated in 10 mM KCl, 7.5 mM potassium iminodiacetate, and 10 mM Mes-KOH, pH 6.15, at 20°C. In Figures 2 and 7, ABA, Ca^{2+} , EGTA, and H_2O_2 were added to the solution or CO_2 -free air was bubbled through the solution. Stomatal apertures were measured with an optical microscope (Optiphot-2; Nikon, Tokyo, Japan) fitted with a camera lucida and a digitizing table (TG 1017; Houston Instrument, Austin, TX) linked to a personal computer.

Protoplast Preparation

Guard cell protoplasts (GCPs) were prepared essentially as reported by Pandey et al. (2002). GCPs then were resuspended twice in 0.35 M mannitol, 10 mM KCl, and 1 mM Mes-NaOH, pH 6.1, and incubated in the same solution with ABA or ethanol solvent control. Then, GCPs were pelleted and stored at $-80^\circ C$.

To prepare *Arabidopsis* mesophyll cell protoplasts (MCPs), rosette

leaves from 4-week-old plants were excised and portions of the abaxial epidermis were peeled off. The peeled areas were floated peeled-side down on basic medium containing 0.07% cellulysin, 1.5% cellulase Onozuka RS, 0.02% pectolyase Y23, 0.1% polyvinylpyrrolidone 40, 0.25% BSA, and 0.5 mM ascorbic acid. After 2 h at 28°C with agitation, undigested material was removed by filtration through a 25- μ m nylon net, and MCPs were collected by centrifugation at 150g for 20 min. MCPs were washed with fresh basic medium, pelleted again, and stored at -80°C.

The purity of the GCP and MCP preparations was 70 to 90% on a cell number basis.

DNA and RNA Analysis

The *OST1* gene was amplified by PCR from genomic DNA using oligonucleotides 5'-CTCTGATGTCTTGGTGC-3' and 5'-GTGTAACA-TTGAGACAA-3'. The *ost1* cDNA was obtained by reverse transcription of total RNA using the Titan One Tube RT-PCR System (Roche Applied Science, Indianapolis, IN) and the same oligonucleotides as described above. The amplified DNA was cloned into PCR-TOPO.1 (Invitrogen, La Jolla, CA).

For reverse transcription PCR (RT-PCR) analysis, total RNA was extracted, treated with DNase, and purified on RNeasy columns (Qiagen, Valencia, CA). Five micrograms of total RNA was reverse transcribed with SuperScript (Gibco BRL, Life Technologies). The cDNAs obtained were diluted 10-fold, and 2 μ L was used in 50- μ L PCR steps. A 590-bp fragment of *OST1* cDNA was amplified with oligonucleotides 5'-CTTCCAGCAACTCATTTCAGGAGT-3' and 5'-ACAGTTGCTTCTGCAATGATCTGC-3'. As an internal standard for cDNA amounts, a 700-bp fragment of *EF1 α* cDNA was amplified with oligonucleotides 5'-ATGCCCCAGGACATCGTGATTCA-3' and 5'-TTGGCGGCACCCTTAGCTGGATCA-3'. For RT-PCR control, *OSKL2* and *OSKL3* cDNAs were amplified by PCR from total cDNA with the following oligonucleotides: 5'-CCACAGGTCCTAAGGCATCCTA-3' and 5'-GTTAAAAAAGGCTTTTTATTAGAGAGCGT-3' for *OSKL2*, and 5'-TCATAGATCATTGAGACATCCTA-3' and 5'-CAGACTTTGTCC-TCAGGAATCTC-3' for *OSKL3*. PCR products were confirmed by sequence and used as templates for amplification with *OST1* oligonucleotides used for RT-PCR.

Transgenic Plants

Transgenic *Arabidopsis* plants were generated by *Agrobacterium tumefaciens*-mediated transformation (Clough and Bent, 1998). For functional complementation of the *ost1* mutants, an XbaI-SalI fragment of BAC F1715 containing *At4g33950* (nucleotides 55,462 to 59,974) was subcloned into the T-DNA vector pCAMBIA1390. The *pOST1::GUS* construct was obtained by amplifying 1.4 kb of the *OST1* promoter region from BAC F1715 using oligonucleotides 5'-GCCGGATCCCTCTAGAAGAGTGTATTGGG-3' and 5'-GCCGGATCCCTTTCTCTGTCTCTTTGC-3' and cloning the amplified DNA into the BamHI site of the T-DNA vector pCAMBIA1381Z. Four independent transgenic lines were analyzed by β -glucuronidase histochemical staining (Blazquez et al., 1997).

In-Gel Kinase Assays

Protein extraction and in-gel protein kinase assays were performed as described (Droillard et al., 2000). Protein extracts (30 μ g) were

electrophoresed on 10% SDS-polyacrylamide gels embedded with 0.5 mg/mL Histone III-S (Sigma) as a substrate for the kinases. After renaturation of the proteins, kinase activity was assayed in 40 mM Hepes, pH 7.5, 2 mM DTT, 20 mM MgCl₂, 0.1 mM orthovanadate, 1 mM CaCl₂, and 25 μ M γ -³²P-ATP. Gels were dried on Whatman 3MM paper and analyzed using a Storm imager (Molecular Dynamics, Sunnyvale, CA). To test the Ca²⁺ independence of *OST1* activity, CaCl₂ was replaced by EGTA in the kinase activity buffer.

Reactive Oxygen Species Detection

Reactive oxygen species production in guard cells was analyzed using 2',7'-dichlorofluorescein diacetate essentially as described (Murata et al., 2001). Epidermal leaf peels were prepared from 5-week-old plants (grown under an 8-h photoperiod) and mounted on a microscope slide with medical adhesive (Hollister, Libertyville, IL). Epidermal tissues were incubated for 3 h in 30 mM KCl and 10 mM Mes-KOH, pH 6.15. A concentration of 30 μ M 2',7'-dichlorofluorescein diacetate was added to the incubation medium. After 20 min, the excess of dye was eliminated by two to three washes with distilled water. Epidermal tissues then were incubated for 20 to 30 min with 50 μ M ABA or with an equal volume of ethanol as a control. Guard cells were observed with an epifluorescence microscope equipped with a charge-coupled device camera. Images were captured and the relative fluorescence emission of guard cells was analyzed using Adobe Photoshop 5.0 (Mountain View, CA) (Murata et al., 2001).

Upon request, all novel materials described in this article will be made available in a timely manner for noncommercial research purposes.

Accession Numbers

The GenBank accession numbers for the sequences described in this article are AJ316009 (wild-type *OST1*), L05562 and L05561 (*OSKL2* and *OSKL3*, previously designated ATHPROKINB and ATHPROKINA), AL031032 (*At4g33950*), AAF27340 (AAPK), and BAB61735 (PKABA).

ACKNOWLEDGMENTS

We thank Marie-Jo Droillard for advice on in-gel kinase assays, Juliette Leymarie for advice on protoplast preparation, and François Parcy, Helen North, and Jeffrey Leung for discussions and comments on the manuscript. This work was supported by the Centre National de la Recherche Scientifique, a European Molecular Biology Organization long-term fellowship to A.-C.M., a fellowship from the Ministère de l'Enseignement Supérieur et de la Recherche to S.M., and an Indo-French Centre for the Promotion of Advanced Research grant to A.V.

Received September 19, 2002; accepted September 25, 2002.

REFERENCES

Allen, G.J., Kuchitsu, K., Chu, S.P., Murata, Y., and Schroeder,

- J.I. (1999). *Arabidopsis abi1-1* and *abi2-1* phosphatase mutations reduce abscisic acid-induced cytoplasmic calcium rises in guard cells. *Plant Cell* **11**, 1785–1798.
- Assmann, S.M., and Wang, X.-Q. (2001). From milliseconds to millions of years: Guard cells and environmental responses. *Curr. Opin. Plant Biol.* **4**, 421–428.
- Blatt, M.R. (2000). Cellular signaling and volume control in stomatal movements in plants. *Annu. Rev. Cell Dev. Biol.* **16**, 221–241.
- Blazquez, M.A., Soowal, L.N., Lee, I., and Weigel, D. (1997). *LEAFY* expression and flower initiation in *Arabidopsis*. *Development* **124**, 3835–3844.
- Clough, S.J., and Bent, A.F. (1998). Floral dip: A simplified method for *Agrobacterium*-mediated transformation of *Arabidopsis thaliana*. *Plant J.* **16**, 735–743.
- Cutler, S., Ghassemian, M., Bonetta, D., Cooney, S., and McCourt, P. (1996). A protein farnesyl transferase involved in abscisic acid signal transduction in *Arabidopsis*. *Science* **273**, 1239–1241.
- Droillard, M.J., Thibivilliers, S., Cazale, A.C., Barbier-Brygoo, H., and Lauriere, C. (2000). Protein kinases induced by osmotic stresses and elicitor molecules in tobacco cell suspensions: Two crossroad MAP kinases and one osmoregulation-specific protein kinase. *FEBS Lett.* **474**, 217–222.
- Gomez-Cadenas, A., Verhey, S.D., Holappa, L.D., Shen, Q., Ho, T.H., and Walker-Simmons, M.K. (1999). An abscisic acid-induced protein kinase, PKABA1, mediates abscisic acid-suppressed gene expression in barley aleurone layers. *Proc. Natl. Acad. Sci. USA* **96**, 1767–1772.
- Gomez-Cadenas, A., Zentella, R., Walker-Simmons, M.K., and Ho, T.H. (2001). Gibberellin/abscisic acid antagonism in barley aleurone cells: Site of action of the protein kinase PKABA1 in relation to gibberellin signaling molecules. *Plant Cell* **13**, 667–679.
- Gosti, F., Beaudoin, N., Serizet, C., Webb, A.A.R., Vartanian, N., and Giraudat, J. (1999). ABI1 protein phosphatase 2C is a negative regulator of abscisic acid signaling. *Plant Cell* **11**, 1897–1909.
- Guan, L.M., Zhao, J., and Scandalios, J.G. (2000). *Cis*-elements and *trans*-factors that regulate expression of the maize *Cat1* antioxidant gene in response to ABA and osmotic stress: H₂O₂ is the likely intermediary signaling molecule for the response. *Plant J.* **22**, 87–95.
- Hanks, S.K., and Quinn, A.M. (1991). Protein kinase catalytic domain sequence database: Identification of conserved features of primary structure and classification of family members. *Methods Enzymol.* **200**, 38–62.
- Hardie, D.G. (1999). Plant protein serine/threonine kinases: Classification and functions. *Annu. Rev. Plant Physiol. Plant Mol. Biol.* **50**, 97–131.
- Hardie, D.G., Carling, D., and Carlson, M. (1998). The AMP-activated/SNF1 protein kinase subfamily: Metabolic sensors of the eukaryotic cell? *Annu. Rev. Biochem.* **67**, 821–855.
- Hetherington, A.M. (2001). Guard cell signaling. *Cell* **107**, 711–714.
- Hugouvieux, V., Kwak, J.M., and Schroeder, J.I. (2001). An mRNA cap binding protein, ABH1, modulates early abscisic acid signal transduction in *Arabidopsis*. *Cell* **106**, 477–487.
- Jones, H.G. (1999). Use of thermography for quantitative studies of spatial and temporal variation of stomatal conductance over leaf surfaces. *Plant Cell Environ.* **22**, 1043–1055.
- Koornneef, M., Reuling, G., and Karssen, C.M. (1984). The isolation and characterization of abscisic acid-insensitive mutants of *Arabidopsis thaliana*. *Physiol. Plant.* **61**, 377–383.
- Lemichez, E., Wu, Y., Sanchez, J.P., Mettouchi, A., Mathur, J., and Chua, N.H. (2001). Inactivation of AtRac1 by abscisic acid is essential for stomatal closure. *Genes Dev.* **15**, 1808–1816.
- Leung, J., Bouvier-Durand, M., Morris, P.-C., Guerrier, D., Chefdor, F., and Giraudat, J. (1994). *Arabidopsis* ABA-response gene *ABI1*: Features of a calcium-modulated protein phosphatase. *Science* **264**, 1448–1452.
- Leung, J., Merlot, S., and Giraudat, J. (1997). The *Arabidopsis* *ABSCISIC ACID-INSENSITIVE 2 (ABI2)* and *ABI1* genes encode homologous protein phosphatases 2C involved in abscisic acid signal transduction. *Plant Cell* **9**, 759–771.
- Leyman, B., Geelen, D., Quintero, F.J., and Blatt, M.R. (1999). A tobacco syntaxin with a role in hormonal control of guard cell ion channels. *Science* **283**, 537–540.
- Li, J., and Assmann, S.M. (1996). An abscisic acid-activated and calcium-independent protein kinase from guard cells of fava bean. *Plant Cell* **8**, 2359–2368.
- Li, J., Kinoshita, T., Pandey, S., Ng, C.K.-Y., Gygi, S.P., Shimazaki, K.-I., and Assmann, S.M. (2002). Modulation of an RNA-binding protein by abscisic-acid-activated protein kinase. *Nature* **418**, 793–797.
- Li, J., Wang, X.Q., Watson, M.B., and Assmann, S.M. (2000). Regulation of abscisic acid-induced stomatal closure and anion channels by guard cell AAPK kinase. *Science* **287**, 300–303.
- MacRobbie, E.A. (1998). Signal transduction and ion channels in guard cells. *Philos. Trans. R. Soc. Lond. B Biol. Sci.* **353**, 1475–1488.
- Merlot, S., Gosti, F., Guerrier, D., Vavasseur, A., and Giraudat, J. (2001). The ABI1 and ABI2 protein phosphatases 2C act in a negative feedback regulatory loop of the abscisic acid signalling pathway. *Plant J.* **25**, 295–303.
- Merlot, S., Mustilli, A.-C., Genty, B., North, H., Lefebvre, V., Sotta, B., Vavasseur, A., and Giraudat, J. (2002). Use of infrared thermal imaging to isolate *Arabidopsis* mutants defective in stomatal regulation. *Plant J.* **30**, 601–609.
- Meyer, K., Leube, M.P., and Grill, E. (1994). A protein phosphatase 2C involved in ABA signal transduction in *Arabidopsis thaliana*. *Science* **264**, 1452–1455.
- Mori, I.C., and Muto, S. (1997). Abscisic acid activates a 48-kilodalton protein kinase in guard cell protoplasts. *Plant Physiol.* **113**, 833–839.
- Murashige, T., and Skoog, F. (1962). A revised medium for rapid growth and bioassays with tobacco tissue culture. *Physiol. Plant.* **15**, 493–497.
- Murata, Y., Pei, Z.-M., Mori, I.C., and Schroeder, J.I. (2001). Abscisic acid activation of plasma membrane Ca²⁺ channels in guard cells requires NAD(P)H and is differentially disrupted upstream and downstream of reactive oxygen species production in the *abi1-1* and *abi2-1* protein phosphatase 2C mutants. *Plant Cell* **13**, 2513–2523.
- Pandey, S., Wang, X.-Q., Coursol, S.A., and Assmann, S.M. (2002). Preparation and application of *Arabidopsis thaliana* guard cell protoplasts. *New Phytol.* **153**, 517–526.
- Park, Y.S., Hong, S.W., Oh, S.A., Kwak, J.M., Lee, H.H., and Nam, H.G. (1993). Two putative protein kinases from *Arabidopsis thaliana* contain highly acidic domains. *Plant Mol. Biol.* **22**, 615–624.
- Pei, Z.-M., Ghassemian, M., Kwak, C.M., McCourt, P., and Schroeder, J.I. (1998). Role of farnesyltransferase in ABA regulation of guard cell anion channels and plant water loss. *Science* **282**, 287–290.
- Pei, Z.-M., Murata, Y., Benning, G., Thomine, S., Klüsener, B.,

- Allen, G.J., Grill, E., and Schroeder, J.** (2000). Calcium channels activated by hydrogen peroxide mediate abscisic acid signalling in guard cells. *Nature* **406**, 731–734.
- Raskin, I., and Ladyman, J.A.R.** (1988). Isolation and characterization of a barley mutant with abscisic acid-insensitive stomata. *Planta* **173**, 73–78.
- Schroeder, J.I., Allen, G.J., Hugouvieux, V., Kwak, J.M., and Waner, D.** (2001). Guard cell signal transduction. *Annu. Rev. Plant Physiol. Plant Mol. Biol.* **52**, 627–658.
- Sheen, J.** (1998). Mutational analysis of protein phosphatase 2C involved in abscisic acid signal transduction in higher plants. *Proc. Natl. Acad. Sci. USA* **95**, 975–980.
- Wang, X.Q., Ullah, H., Jones, A.M., and Assmann, S.M.** (2001). G protein regulation of ion channels and abscisic acid signaling in *Arabidopsis* guard cells. *Science* **292**, 2070–2072.
- Willmer, C., and Fricker, M.** (1996). *Stomata*, 2nd ed. (London: Chapman & Hall).
- Xiong, L., Gong, Z., Rock, C.D., Subramanian, S., Guo, Y., Xu, W., Galbraith, D., and Zhu, J.K.** (2001). Modulation of abscisic acid signal transduction and biosynthesis by an Sm-like protein in *Arabidopsis*. *Dev. Cell* **1**, 771–781.
- Zhang, X., Zhang, L., Dong, F., Gao, J., Galbraith, D.W., and Song, C.P.** (2001). Hydrogen peroxide is involved in abscisic acid-induced stomatal closure in *Vicia faba*. *Plant Physiol.* **126**, 1438–1448.

Arabidopsis OST1 Protein Kinase Mediates the Regulation of Stomatal Aperture by Abscisic Acid and Acts Upstream of Reactive Oxygen Species Production

Anna-Chiara Mustilli, Sylvain Merlot, Alain Vavasseur, Francesca Fenzi and Jérôme Giraudat
Plant Cell 2002;14;3089-3099; originally published online November 20, 2002;
DOI 10.1105/tpc.007906

This information is current as of June 27, 2019

References	This article cites 42 articles, 19 of which can be accessed free at: /content/14/12/3089.full.html#ref-list-1
Permissions	https://www.copyright.com/ccc/openurl.do?sid=pd_hw1532298X&ciissn=1532298X&WT.mc_id=pd_hw1532298X
eTOCs	Sign up for eTOCs at: http://www.plantcell.org/cgi/alerts/ctmain
CiteTrack Alerts	Sign up for CiteTrack Alerts at: http://www.plantcell.org/cgi/alerts/ctmain
Subscription Information	Subscription Information for <i>The Plant Cell</i> and <i>Plant Physiology</i> is available at: http://www.aspb.org/publications/subscriptions.cfm