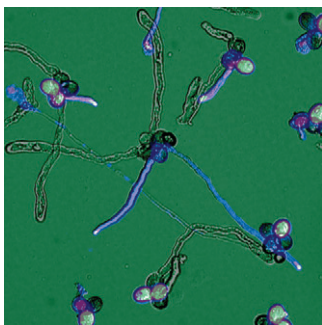


T H E  
**PLANT**  
C E L L

Volume 21 Number 2 February 2009

The electronic form of this issue, available at [www.plantcell.org](http://www.plantcell.org), is the journal of record.

**ON THE COVER**



In flowering plants, male gametes are delivered to the embryo sac by the pollen tube. The pollen tube develops from a pollen grain after it lands on a compatible stigma and grows rapidly from the stigmatic surface through the style and into the ovary. Growth of the pollen tube is focused at the tip, and Szumlanski and Nielsen (pages 526–544) show that the Rab GTPase RabA4d plays an important role in the regulation of this growth process. The cover image shows *in vitro*-germinated *rabA4d* mutant pollen grains in the quartet background. Half of the pollen grains express EYFP-RabA4d.




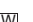


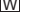
**IN BRIEF**

- Glutaredoxin Functions in Floral Development** 363  
Nancy R. Hofmann
- A Receptor-Like Kinase That Functions in Adaptation to Salt Stress in Legumes** 364  
Nancy A. Eckardt
- Functions of DNA Polymerase  $\epsilon$**  365  
Nancy A. Eckardt
- Functional ER Chaperone Required in Rice Blast Disease** 366  
Gregory Bertoni
- Nodulation Signaling in Legumes Depends on an NSP1-NSP2 Complex** 367  
Nancy A. Eckardt

**MEETING REPORT**

- The Future of Science: Food and Water for Life** 368  
Nancy A. Eckardt, Eleonora Cominelli, Massimo Galbiati, and Chiara Tonelli

**RESEARCH ARTICLES**

- Genetic Regulation of Meiotic Cross-Overs between Related Genomes in *Brassica napus* Haploids and Hybrids**  373  
Stéphane D. Nicolas, Martine Leflon, Hervé Monod, Frédérique Eber, Olivier Coriton, Virginie Huteau, Anne-Marie Chèvre, and Eric Jenczewski
- Epigenetic Regulation, Somatic Homologous Recombination, and Abscisic Acid Signaling Are Influenced by DNA Polymerase  $\epsilon$  Mutation in *Arabidopsis***   386  
Haibo Yin, Xia Zhang, Jun Liu, Youqun Wang, Junna He, Tao Yang, Xuhui Hong, Qing Yang, and Zhizhong Gong
- Genome-Wide Analysis of Genes Targeted by PHYTOCHROME INTERACTING FACTOR 3-LIKE5 during Seed Germination in *Arabidopsis***  403  
Eunkyoo Oh, Hyojin Kang, Shinjiro Yamaguchi, Jeongmoo Park, Doheon Lee, Yuji Kamiya, and Giltso Choi
- Tendril-less* Regulates Tendril Formation in Pea Leaves**   420  
Julie Hofer, Lynda Turner, Carol Moreau, Mike Ambrose, Peter Isaac, Susan Butcher, James Weller, Adeline Dupin, Marion Dalmais, Christine Le Signor, Abdelhafid Bendahmane, and Noel Ellis
- Nuclear Activity of ROXY1, a Glutaredoxin Interacting with TGA Factors, Is Required for Petal Development in *Arabidopsis thaliana***  429  
Shutian Li, Andrea Lauri, Mark Ziemann, Andrea Busch, Mrinal Bhawe, and Sabine Zachgo

## EDITORIAL BOARD

### Editor in Chief

Cathie Martin

### Coeditors

Sarah M. Assmann  
Jody Banks  
Alice Barkan  
Kathy Barton  
David Baum  
Sebastian Bednarek  
James Birchler  
Ulla Bonas  
Christopher Bowler  
Nigel Crawford  
Xing Wang Deng  
Allan Downie  
Mark Estelle  
Alisdair Fernie  
Pascal Genschik  
Jean T. Greenberg  
Thomas Guilfoyle  
Ann Hirsch  
David Jackson  
Martin Kater  
Patricia Leon  
Clive Lloyd  
William Lucas  
Marjori Matzke  
Blake Meyers  
Joseph Noel  
Michael Palmgren  
Markus Pauly  
Scott C. Peck  
Barry Pogson  
David Smyth  
Chris J. Staiger  
Keiko Sugimoto  
Nicholas J. Talbot

### Managing Editor

John Long

### Senior Features Editor

Nancy A. Eckardt

### Science Editors

Greg Berton  
Kathleen L. Farquharson  
Nancy R. Hofmann  
Jennifer M. Mach

### Production Manager

Susan L. Entwistle

### Manuscript Manager

Annette Kessler

### Publications Director

Nancy A. Winchester

### Publisher

American Society of  
Plant Biologists  
Executive Director,  
Crispin Taylor

### Editorial Office

15501 Monona Drive  
Rockville, Maryland 20855-2768  
Telephone: 301/296-0908  
Fax: 301/279-2996  
<http://www.aspb.org>

Online at [www.plantcell.org](http://www.plantcell.org)

- The *Arabidopsis* Proteasome RPT5 Subunits Are Essential for Gametophyte Development and Show Accession-Dependent Redundancy** [W](#) 442  
Jean-Luc Gallois, Anouchka Guyon-Debast, Alain Lécureuil, Daniel Vezon, Virginie Carpentier, Sandrine Bonhomme, and Philippe Guerche
- The RPN5 Subunit of the 26s Proteasome Is Essential for Gametogenesis, Sporophyte Development, and Complex Assembly in *Arabidopsis*** [W](#) 460  
Adam J. Book, Jan Smalle, Kwang-Hee Lee, Peizhen Yang, Joseph M. Walker, Sarah Casper, James H. Holmes, Laura A. Russo, Zachri W. Buzzinotti, Pablo D. Jenik, and Richard D. Vierstra
- Zea mays* Annexins Modulate Cytosolic Free Ca<sup>2+</sup> and Generate a Ca<sup>2+</sup>-Permeable Conductance** [W](#) 479  
Anuphon Laohavisit, Jennifer C. Mortimer, Vadim Demidchik, Katy M. Coxon, Matthew A. Stancombe, Neil Macpherson, Colin Brownlee, Andreas Hofmann, Alex A.R. Webb, Henk Miedema, Nicholas H. Battey, and Julia M. Davies
- Phytochrome A Mediates Rapid Red Light-Induced Phosphorylation of *Arabidopsis* FAR-RED ELONGATED HYPOCOTYL1 in a Low Fluence Response** [C](#) [W](#) 494  
Yunping Shen, Zhenzhen Zhou, Suhua Feng, Jigang Li, Anna Tan-Wilson, Li-Jia Qu, Haiyang Wang, and Xing Wang Deng
- A Novel Fatty Acyl-CoA Synthetase Is Required for Pollen Development and Sporopollenin Biosynthesis in *Arabidopsis*** [C](#) [W](#) 507  
Clarice de Azevedo Souza, Sung Soo Kim, Stefanie Koch, Lucie Kienow, Katja Schneider, Sarah M. McKim, George W. Haughn, Erich Kombrink, and Carl J. Douglas
- The Rab GTPase RabA4d Regulates Pollen Tube Tip Growth in *Arabidopsis thaliana*** [W](#) 526  
Amy L. Szumlanski and Erik Nielsen
- GRAS Proteins Form a DNA Binding Complex to Induce Gene Expression during Nodulation Signaling in *Medicago truncatula*** [W](#) 545  
Sibylle Hirsch, Jiyoung Kim, Alfonso Muñoz, Anne B. Heckmann, J. Allan Downie, and Giles E.D. Oldroyd
- A DYW Domain-Containing Pentatricopeptide Repeat Protein Is Required for RNA Editing at Multiple Sites in Mitochondria of *Arabidopsis thaliana*** [W](#) 558  
Anja Zehrmann, Daniil Verbitskiy, Johannes A. van der Merwe, Axel Brennicke, and Mizuki Takenaka
- The E3 Ubiquitin Ligase SCF<sup>TIR1/AFB</sup> and Membrane Sterols Play Key Roles in Auxin Regulation of Endocytosis, Recycling, and Plasma Membrane Accumulation of the Auxin Efflux Transporter PIN2 in *Arabidopsis thaliana*** [C](#) [W](#) 568  
Jianwei Pan, Shozo Fujioka, Jianling Peng, Jianghua Chen, Guangming Li, and Rujin Chen
- An *Arabidopsis* GPI-Anchor Plasmodesmal Neck Protein with Callose Binding Activity and Potential to Regulate Cell-to-Cell Trafficking** [W](#) 581  
Clare Simpson, Carole Thomas, Kim Findlay, Emmanuelle Bayer, and Andrew J. Maule
- Arabidopsis* Photorespiratory Serine Hydroxymethyltransferase Activity Requires the Mitochondrial Accumulation of Ferredoxin-Dependent Glutamate Synthase** [W](#) 595  
Aziz Jamaï, Patrice A. Salomé, Stephen H. Schilling, Andreas P.M. Weber, and C. Robertson McClung
- Ethylene Mediates Response and Tolerance to Potassium Deprivation in *Arabidopsis*** [W](#) 607  
Ji-Yul Jung, Ryoung Shin, and Daniel P. Schachtman
- Drought Stress-Induced Rma1H1, a RING Membrane-Anchored E3 Ubiquitin Ligase Homolog, Regulates Aquaporin Levels via Ubiquitination in Transgenic *Arabidopsis* Plants** [C](#) [W](#) 622  
Hyun Kyung Lee, Seok Keun Cho, Ora Son, Zhengyi Xu, Inhwan Hwang, and Woo Taek Kim
- The Cytosolic Protein Response as a Subcomponent of the Wider Heat Shock Response in *Arabidopsis*** [W](#) 642  
Akiko Sugio, René Dreos, Frederic Aparicio, and Andrew J. Maule

- A Bacterial-Type ABC Transporter Is Involved in Aluminum Tolerance in Rice** <sup>W</sup> 655  
 Chao Feng Huang, Naoki Yamaji, Namiki Mitani, Masahiro Yano, Yoshiaki Nagamura, and Jian Feng Ma
- A Novel Plant Leucine-Rich Repeat Receptor Kinase Regulates the Response of *Medicago truncatula* Roots to Salt Stress** <sup>W</sup> 668  
 Laura de Lorenzo, Francisco Merchan, Philippe Laporte, Richard Thompson, Jonathan Clarke, Carolina Sousa, and Martin Crespi
- The ER Chaperone LHS1 Is Involved in Asexual Development and Rice Infection by the Blast Fungus *Magnaporthe oryzae*** <sup>C</sup> <sup>W</sup> <sup>OA</sup> 681  
 Mihwa Yi, Myoung-Hwan Chi, Chang Hyun Khang, Sook-Young Park, Seogchan Kang, Barbara Valent, and Yong-Hwan Lee

<sup>C</sup> Some figures in this article are displayed in color online but in black and white in the print edition.

<sup>W</sup> Online version contains Web-only data.

<sup>OA</sup> Open Access articles can be viewed online without a subscription.



© 2009 American Society of Plant Biologists. All rights reserved. Printed on acid-free paper effective with Volume 1, Number 1, January 1989. Printed in the United States of America.

**The Plant Cell** (ISSN 1040-4651, online ISSN 1531-298X) is published monthly (one volume per year) by the American Society of Plant Biologists, 15501 Monona Drive, Rockville, MD 20855-2768, and is produced by Dartmouth Journal Services, Waterbury, VT. The institutional price for the print and online versions is based on type of institution; contact [institution@aspb.org](mailto:institution@aspb.org). A subscription includes both *The Plant Cell* and *Plant Physiology*; single copies may be purchased for \$95 each, plus \$10 shipping (U.S.) or \$12 (outside U.S.). Members of the American Society of Plant Biologists may subscribe to *The Plant Cell* for \$185. Nonmember individuals may subscribe for \$375. For matters regarding subscriptions, contact Suzanne Cholwek, ASPB, 15501 Monona Drive, Rockville, MD 20855-2768; telephone 301/296-0926; fax 301/251-6740; e-mail [scholwek@aspb.org](mailto:scholwek@aspb.org). Notify ASPB in writing within 3 months (domestic) or 6 months (foreign) of issue date, and defective copies or copies lost in the mail will be replaced. Send all inquiries regarding display advertising to FASEB AdNet, 9650 Rockville Pike, Bethesda, MD 20814-3998; telephone 301/634-7791; fax 301/634-7153; e-mail [adnet@faseb.org](mailto:adnet@faseb.org). Periodicals postage paid at Rockville, MD 20850, and at additional mailing offices.

**Postmaster:** Send address changes to *The Plant Cell*, American Society of Plant Biologists, 15501 Monona Drive, Rockville, MD 20855-2768. The online version of *The Plant Cell* is available at [www.plantcell.org](http://www.plantcell.org).

**Permission to Reprint:** Permission to make digital or hard copies of part or all of a work published in *The Plant Cell* is granted without fee for personal or classroom use provided that copies are not made or distributed for profit or commercial advantage and that copies bear the full citation and the following notice on the first page: "Copyright American Society of Plant Biologists." For all other kinds of copying, request permission in writing from Nancy A. Winchester, Publications Director, ASPB headquarters.

This information is current as of March 25, 2019

|                                 |   |
|---------------------------------|---|
| <b>Permissions</b>              | <a href="https://www.copyright.com/ccc/openurl.do?sid=pd_hw1532298X&amp;issn=1532298X&amp;WT.mc_id=pd_hw1532298X">https://www.copyright.com/ccc/openurl.do?sid=pd_hw1532298X&amp;issn=1532298X&amp;WT.mc_id=pd_hw1532298X</a> |
| <b>eTOCs</b>                    | Sign up for eTOCs at:<br><a href="http://www.plantcell.org/cgi/alerts/ctmain">http://www.plantcell.org/cgi/alerts/ctmain</a>  |
| <b>CiteTrack Alerts</b>         | Sign up for CiteTrack Alerts at:<br><a href="http://www.plantcell.org/cgi/alerts/ctmain">http://www.plantcell.org/cgi/alerts/ctmain</a>   |
| <b>Subscription Information</b> | Subscription Information for <i>The Plant Cell</i> and <i>Plant Physiology</i> is available at:<br><a href="http://www.aspb.org/publications/subscriptions.cfm">http://www.aspb.org/publications/subscriptions.cfm</a>        |