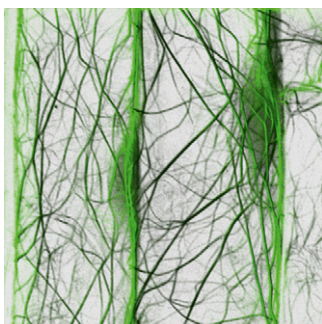


T H E
PLANT
C E L L

Volume 22 Number 9 September 2010

The electronic form of this issue, available at www.plantcell.org, is the journal of record.

ON THE COVER



The actin cytoskeleton is a complex network whose organization and dynamics are finely regulated by numerous actin-binding proteins. Papuga et al. (pages 3034–3052) provide evidence that the six members of the *Arabidopsis* LIM protein family are specialized in the cross-linking of actin filaments in parallel arrays also called actin bundles. Actin bundles are assumed to provide the main tracks for myosin-dependent transport and to stabilize transvacuolar strands of cytoplasm. The cover displays a cortical section in primary root cells expressing a green fluorescent protein-fused WLIM1 protein, showing that WLIM1 decorates a filamentous network of highly bundled actin fibers.

IN BRIEF

- Copper Transport and Bacterial Pathogenesis in Rice** 2923
Jennifer Mach
- The *Chlorella* Genome: Big Surprises from a Small Package** 2924
Nancy A. Eckardt
- Maize Viviparous14: Structure Meets Function** 2925
Gregory Berton

COMMENTARY

- Implementing a Rational and Consistent Nomenclature for Serine/Arginine-Rich Protein Splicing Factors (SR Proteins) in Plants** 2926
Andrea Barta, Maria Kalyna, and Anireddy S.N. Reddy

REVIEW

- Endoplasmic Reticulum Protein Quality Control and Its Relationship to Environmental Stress Responses in Plants** 2930
Jian-Xiang Liu and Stephen H. Howell

RESEARCH ARTICLES

- The *Chlorella variabilis* NC64A Genome Reveals Adaptation to Photosymbiosis, Coevolution with Viruses, and Cryptic Sex** 2943
Guillaume Blanc, Garry Duncan, Irina Agarkova, Mark Borodovsky, James Gurnon, Alan Kuo, Erika Lindquist, Susan Lucas, Jasmyn Pangilinan, Juergen Polle, Asaf Salamov, Astrid Terry, Takashi Yamada, David D. Dunigan, Igor V. Grigoriev, Jean-Michel Claverie, and James L. Van Etten
- Cytokinin Regulation of Auxin Synthesis in *Arabidopsis* Involves a Homeostatic Feedback Loop Regulated via Auxin and Cytokinin Signal Transduction** 2956
Brian Jones, Sara Andersson Gunnerås, Sara V. Petersson, Petr Tarkowski, Neil Graham, Sean May, Karel Dolezal, Göran Sandberg, and Karin Ljung
- Structural Insights into Maize Viviparous14, a Key Enzyme in the Biosynthesis of the Phytohormone Abscisic Acid** 2970
Simon A.J. Messing, Sandra B. Gabelli, Ignacia Echeverria, Jonathan T. Vogel, Jiahn Chou Guan, Bao Cai Tan, Harry J. Klee, Donald R. McCarty, and L. Mario Amzel
- Hydrogen Peroxide-Mediated Activation of MAP Kinase 6 Modulates Nitric Oxide Biosynthesis and Signal Transduction in *Arabidopsis*** 2981
Pengcheng Wang, Yanyan Du, Yuan Li, Dongtao Ren, and Chun-Peng Song

EDITORIAL BOARD

Editor in Chief

Cathie Martin

Coeditors

Sarah M. Assmann
Jody Banks
Alice Barkan
Kathy Barton
David Baum
Sebastian Bednarek
James Birchler
Ulla Bonas
Christopher Bowler
Judy Callis
XiaoFeng Cao
Nigel Crawford
Vincenzo De Luca
Xing Wang Deng
Xinnian Dong
Allan Downie
Alisdair Fernie
Pascal Genschik
Jean T. Greenberg
Thomas Guilfoyle
David Jackson
Martin Kater
Patricia Leon
Clive Lloyd
William Lucas
Blake Meyers
Ortrun Mittelsten-Scheid
Joseph Noel
Michael Palmgren
Markus Pauly
Scott C. Peck
Barry Pogson
David Smyth
Chris J. Staiger
Keiko Sugimoto

Managing Editor

John Long

Senior Features Editor

Nancy A. Eckardt

Features Editor

Mary Williams

Science Editors

Greg Bertoni
Kathleen L. Farquharson
Nancy R. Hofmann
Jennifer M. Mach

Production Manager

Susan L. Entwistle

Manuscript Manager

Annette Kessler

Publications Director

Nancy A. Winchester

Publisher

American Society of
Plant Biologists
Executive Director,
Crispin Taylor

Editorial Office

15501 Monona Drive
Rockville, Maryland 20855-2768
Telephone: 301/296-0908
Fax: 301/279-2996
<http://www.aspb.org>

Online at www.plantcell.org

- Structural Sterols Are Involved in Both the Initiation and Tip Growth of Root Hairs in *Arabidopsis thaliana*** [W](#) 2999
Miroslav Ovečka, Tobias Berson, Martina Beck, Jan Derksen, Jozef Šamaj, František Baluška, and Irene K. Lichtscheidl
- Distinct Roles of the ATR Kinase and the Mre11-Rad50-Nbs1 Complex in the Maintenance of Chromosomal Stability in *Arabidopsis*** 3020
Simon Amiard, Cyril Charbonnel, Elisabeth Allain, Annie Depeiges, Charles I. White, and Maria Eugenia Gallego
- Arabidopsis* LIM Proteins: A Family of Actin Bundlers with Distinct Expression Patterns and Modes of Regulation** [W](#) [OA](#) 3034
Jessica Papuga, Céline Hoffmann, Monika Dieterle, Danièle Moes, Flora Moreau, Stéphane Tholl, André Steinmetz, and Clément Thomas
- The *Arabidopsis* Exocyst Complex Is Involved in Cytokinesis and Cell Plate Maturation** 3053
Matyáš Fendrych, Lukáš Synek, Tamara Pečenková, Hana Toupalová, Rex Cole, Edita Drdová, Jana Nebesářová, Miroslava Šedinová, Michal Hála, John E. Fowler, and Viktor Žárský
- Arabidopsis* ABCG Transporters, Which Are Required for Export of Diverse Cuticular Lipids, Dimerize in Different Combinations** [W](#) 3066
Heather E. McFarlane, John J.H. Shin, David A. Bird, and A. Lacey Samuels
- A Novel Motif Essential for SNARE Interaction with the K⁺ Channel KC1 and Channel Gating in *Arabidopsis*** [W](#) 3076
Christopher Grefen, Zhonghua Chen, Annegret Honsbein, Naomi Donald, Adrian Hills, and Michael R. Blatt
- Crystal Structures of a *Populus tomentosa* 4-Coumarate:CoA Ligase Shed Light on Its Enzymatic Mechanisms** 3093
Yonglin Hu, Ying Gai, Lei Yin, Xiaoxue Wang, Chunyan Feng, Lei Feng, Defeng Li, Xiang-Ning Jiang, and Da-Cheng Wang
- Expression of a Low CO₂-Inducible Protein, LCI1, Increases Inorganic Carbon Uptake in the Green Alga *Chlamydomonas reinhardtii*** [W](#) [OA](#) 3105
Norikazu Ohnishi, Bratati Mukherjee, Tomoki Tsujikawa, Mari Yanase, Hirobumi Nakano, James V. Moroney, and Hideya Fukuzawa
- Epigenetic Regulation of Repetitive Elements Is Attenuated by Prolonged Heat Stress in *Arabidopsis*** [W](#) [OA](#) 3118
Ales Pecinka, Huy Q. Dinh, Tuncay Baubec, Marisa Rosa, Nicole Lettner, and Ortrun Mittelsten Scheid
- HIGS: Host-Induced Gene Silencing in the Obligate Biotrophic Fungal Pathogen *Blumeria graminis*** [W](#) [OA](#) 3130
Daniela Nowara, Alexandra Gay, Christophe Lacomme, Jane Shaw, Christopher Ridout, Dimitar Douchkov, Götz Hensel, Jochen Kumlehn, and Patrick Schweizer
- The Ubiquitin-Proteasome System Regulates the Accumulation of Turnip yellow mosaic virus RNA-Dependent RNA Polymerase during Viral Infection** [W](#) 3142
Laurent Camborde, Séverine Planchais, Vincent Tournier, Anna Jakubiec, Gabrièle Drugeon, Emmanuelle Lacassagne, Stéphanie Pflieger, Mélanie Chenon, and Isabelle Jupin
- Arabidopsis snc2-1D* Activates Receptor-Like Protein-Mediated Immunity Transduced through WRKY70** [W](#) [OA](#) 3153
Yaxi Zhang, Yuanai Yang, Bin Fang, Patrick Gannon, Pingtao Ding, Xin Li, and Yuelin Zhang

The Bacterial Pathogen *Xanthomonas oryzae* Overcomes Rice Defenses by Regulating Host Copper Redistribution ^W^{OA}

3164

Meng Yuan, Zhaohui Chu, Xianghua Li, Caiguo Xu, and Shiping Wang

Tissue-Adapted Invasion Strategies of the Rice Blast Fungus *Magnaporthe oryzae* ^W

3177

Sylvain Marcel, Ruairidh Sawers, Edward Oakeley, Herbert Angliker, and Uta Paszkowski

^C Some figures in this article are displayed in color online but in black and white in the print edition.

^W Online version contains Web-only data.

^{OA} Open Access articles can be viewed online without a subscription.



© 2010 American Society of Plant Biologists. All rights reserved. Printed on acid-free paper effective with Volume 1, Number 1, January 1989.

Printed in the United States of America.

The Plant Cell (ISSN 1040-4651, online ISSN 1531-298X) is published monthly (one volume per year) by the American Society of Plant Biologists, 15501 Monona Drive, Rockville, MD 20855-2768, and is produced by Dartmouth Journal Services, Waterbury, VT. The institutional price for the print and online versions is based on type of institution; contact institution@aspb.org. A subscription includes both *The Plant Cell* and *Plant Physiology*; single copies may be purchased for \$95 each, plus \$10 shipping (U.S.) or \$12 (outside U.S.). Members of the American Society of Plant Biologists may subscribe to *The Plant Cell* for \$185. Nonmember individuals may subscribe for \$375. For matters regarding subscriptions, contact Suzanne Cholwek, ASPB, 15501 Monona Drive, Rockville, MD 20855-2768; telephone 301/296-0926; fax 301/251-6740; e-mail scholwek@aspb.org. Notify ASPB in writing within 3 months (domestic) or 6 months (foreign) of issue date, and defective copies or copies lost in the mail will be replaced. Send all inquiries regarding display advertising to FASEB AdNet, 9650 Rockville Pike, Bethesda, MD 20814-3998; telephone 301/634-7791; fax 301/634-7153; e-mail adnet@faseb.org. Periodicals postage paid at Rockville, MD 20850, and at additional mailing offices.

Postmaster: Send address changes to *The Plant Cell*, American Society of Plant Biologists, 15501 Monona Drive, Rockville, MD 20855-2768. The online version of *The Plant Cell* is available at www.plantcell.org.

Permission to Reprint: Permission to make digital or hard copies of part or all of a work published in *The Plant Cell* is granted without fee for personal or classroom use provided that copies are not made or distributed for profit or commercial advantage and that copies bear the full citation and the following notice on the first page: "Copyright American Society of Plant Biologists." For all other kinds of copying, request permission in writing from Nancy A. Winchester, Publications Director, ASPB headquarters.

This information is current as of October 19, 2020

Permissions	https://www.copyright.com/ccc/openurl.do?sid=pd_hw1532298X&issn=1532298X&WT.mc_id=pd_hw1532298X
eTOCs	Sign up for eTOCs at: http://www.plantcell.org/cgi/alerts/ctmain
CiteTrack Alerts	Sign up for CiteTrack Alerts at: http://www.plantcell.org/cgi/alerts/ctmain
Subscription Information	Subscription Information for <i>The Plant Cell</i> and <i>Plant Physiology</i> is available at: http://www.aspb.org/publications/subscriptions.cfm