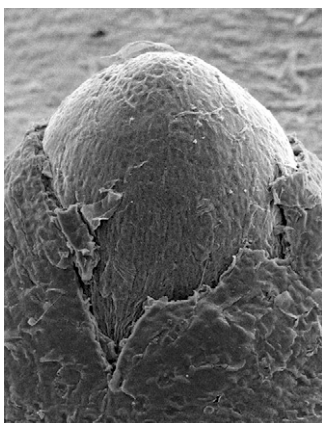


T H E
PLANT
C E L L

Volume 24 Number 8 August 2012

The electronic form of this issue, available at www.plantcell.org, is the journal of record.

ON THE COVER



In rice (*Oryza sativa*), the emergence of adventitious roots in response to submergence is preceded by localized death of epidermal cells. Steffens et al. (pages 3296–3306) show that the crucial decision of rice root epidermal cells to abandon their protective function and enter a cell death program depends on two signals: a mechanical signal from the root to overlying epidermal cells, which provides spatial resolution, and ethylene signaling, mediated by reactive oxygen species, which promotes cell death in mechano-stimulated cells. The cover shows an SEM image of an emerging adventitious root.

IN BRIEF

Calcium Channels and Acquired Thermotolerance: Here Comes the Sun and It's All Right 3167
Jennifer Mach

Maize *opaque1* and Protein Body Formation 3168
Gregory Berton

Transcriptome Study Outlines Ontogeny of the Maize Shoot Apical Meristem 3169
Nancy A. Eckardt

The GSK3-Type Kinase ASK α Targets GLUCOSE-6-PHOSPHATE DEHYDROGENASE to Mediate Oxidative Stress Responses in *Arabidopsis* 3170
Nancy R. Hofmann

Insight into Ribulose 1,5-Bis-Phosphate Carboxylase/Oxygenase Assembly in Maize 3171
Kathleen L. Farquharson

EDITORIAL

Commentaries and Letters to the Editor of *The Plant Cell* 3172
Cathie Martin

LETTERS TO THE EDITOR

FLS2-Mediated Responses to Ax21-Derived Peptides: Response to the Mueller et al. Commentary 3174
Cristian H. Danna, Xue-Cheng Zhang, Ashok Khatri, Andrew F. Bent, Pamela C. Ronald, and Frederick M. Ausubel

Complexity in Differential Peptide–Receptor Signaling: Response to Segonzac et al. and Mueller et al. Commentaries 3177
Horim Lee, Ashok Khatri, Julia M. Plotnikov, Xue-Cheng Zhang, and Jen Sheen

COMMENTARY

The Shoot Apical Meristem Regulatory Peptide CLV3 Does Not Activate Innate Immunity 3186
Cécile Segonzac, Zachary L. Nimchuk, Martina Beck, Paul T. Tarr, Silke Robatzek, Elliot M. Meyerowitz, and Cyril Zipfel

EDITORIAL BOARD

Editor in Chief

Cathie Martin

Coeditors

Sarah M. Assmann
Jody Banks
David Baum
Sebastian Bednarek
James Birchler
Ulla Bonas
Christopher Bowler
Judy Callis
XiaoFeng Cao
Vincenzo De Luca
Xing Wang Deng
Xinnian Dong
Allan Downie
Alisdair Fernie
Pascal Genschik
Jean T. Greenberg
Thomas Guilfoyle
Herman R. Höfte
David Jackson
Regine Kahmann
Martin Kater
Daniel J. Kliebenstein
Patricia Leon
Clive Lloyd
William Lucas
Blake Meyers
Ortrun Mittelsten Scheid
Michael Palmgren
Markus Pauly
Scott C. Peck
Barry Pogson
Zhaohui Qin
Karin Schumacher
David Smyth
Chris J. Staiger
Keiko Sugimoto

Managing Editor

Patti Lockhart

Senior Features Editor

Nancy A. Eckardt

Features Editor

Mary Williams

Science Editors

Greg Bertoni
Kathleen L. Farquharson
Nancy R. Hofmann
Jennifer M. Mach

Production Manager

Susan L. Entwistle

Manuscript Manager

Annette Kessler

Publications Director

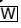
Nancy A. Winchester

Publisher

American Society of
Plant Biologists
Executive Director,
Crispin Taylor

Editorial Office

15501 Monona Drive
Rockville, Maryland 20855-2768
Telephone: 301/296-0908
Fax: 301/279-2996
<http://www.aspb.org>
Online at www.plantcell.org

Contamination Risks in Work with Synthetic Peptides: flg22 as an Example of a Pirate in Commercial Peptide Preparations  3193
Katharina Mueller, Delphine Chinchilla, Markus Albert, Anna K. Jehle, Hubert Kalbacher, Thomas Boller, and Georg Felix

REVIEW

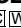
Small Signaling Peptides in *Arabidopsis* Development: How Cells Communicate Over a Short Distance 3198
Evan Murphy, Stephanie Smith, and Ive De Smet

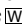
LARGE-SCALE BIOLOGY ARTICLE

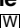
Ontogeny of the Maize Shoot Apical Meristem   3219
Elizabeth M. Takacs, Jie Li, Chuanlong Du, Lalit Ponnala, Diane Janick-Buckner, Jianming Yu, Gary J. Muehlbauer, Patrick S. Schnable, Marja C.P. Timmermans, Qi Sun, Dan Nettleton, and Michael J. Scanlon

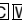

RESEARCH ARTICLES

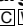

The Histone Methyltransferase SDG724 Mediates H3K36me2/3 Deposition at *MADS50* and *RFT1* and Promotes Flowering in Rice   3235
Changhui Sun, Jun Fang, Taolan Zhao, Bo Xu, Fantao Zhang, Linchuan Liu, Jiuyou Tang, Genfa Zhang, Xiaojian Deng, Fan Chen, Qian Qian, Xiaofeng Cao, and Chengcai Chu

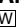
The Phytochrome-Interacting VASCULAR PLANT ONE-ZINC FINGER1 and VOZ2 Redundantly Regulate Flowering in *Arabidopsis*   3248
Yukiko Yasui, Keiko Mukougawa, Mitsuhiro Uemoto, Akira Yokofuji, Ryota Suzuri, Aiko Nishitani, and Takayuki Kohchi

Molecular Characterization of the *glauce* Mutant: A Central Cell-Specific Function Is Required for Double Fertilization in *Arabidopsis*  3264
Yehoram Leshem, Cameron Johnson, Samuel E. Wuest, Xiaoya Song, Quy A. Ngo, Ueli Grossniklaus, and Venkatesan Sundaresan

SKIP Is a Component of the Spliceosome Linking Alternative Splicing and the Circadian Clock in *Arabidopsis*  3278
Xiaoxue Wang, Fangming Wu, Qiguang Xie, Huamei Wang, Ying Wang, Yanling Yue, Ondrej Gahura, Shuangshuang Ma, Lei Liu, Ying Cao, Yuling Jiao, Frantisek Puta, C. Robertson McClung, Xiaodong Xu, and Ligeng Ma

Emerging Roots Alter Epidermal Cell Fate through Mechanical and Reactive Oxygen Species Signaling   3296
Bianka Steffens, Alexander Kovalev, Stanislav N. Gorb, and Margret Sauter

The *Arabidopsis* DELLA *RGALIKE3* Is a Direct Target of MYC2 and Modulates Jasmonate Signaling Responses   3307
Michael Wild, Jean-Michel Davière, Soizic Cheminant, Thomas Regnault, Nicolas Baumberger, Dimitri Heintz, Rachel Baltz, Pascal Genschik, and Patrick Achard

Gibberellin Regulates the *Arabidopsis* Floral Transition through miR156-Targeted SQUAMOSA PROMOTER BINDING-LIKE Transcription Factors  3320
Sha Yu, Vinicius C. Galvão, Yan-Chun Zhang, Daniel Horrer, Tian-Qi Zhang, Yan-Hong Hao, Yu-Qi Feng, Shui Wang, Schmid Markus, and Jia-Wei Wang

- Plasma Membrane Cyclic Nucleotide Gated Calcium Channels Control Land Plant Thermal Sensing and Acquired Thermotolerance** [C](#) [W](#) 3333
 Andrija Finka, America Farinia Henriquez Cuendet, Frans J.M. Maathuis, Younouss Saidi, and Pierre Goloubinoff
- Mutations in an *Arabidopsis* Mitochondrial Transcription Termination Factor-Related Protein Enhance Thermotolerance in the Absence of the Major Molecular Chaperone HSP101** [W](#) 3349
 Minsoo Kim, Ung Lee, Ian Small, Catherine Colas des Francs-Small, and Elizabeth Vierling
- A Missense Mutation in the Glucosamine-6-Phosphate N-Acetyltransferase-Encoding Gene Causes Temperature-Dependent Growth Defects and Ectopic Lignin Deposition in *Arabidopsis*** [C](#) [W](#) 3366
 Mamoru Nozaki, Munetaka Sugiyama, Jun Duan, Hiroshi Uematsu, Tatsuya Genda, and Yasushi Sato
- Stress-Induced GSK3 Regulates the Redox Stress Response by Phosphorylating Glucose-6-Phosphate Dehydrogenase in *Arabidopsis*** [C](#) [W](#) [OA](#) 3380
 Silvia Dal Santo, Hansjörg Stampfl, Julia Krasensky, Stefan Kempa, Yves Gibon, Elena Petutschnig, Wilfried Rozhon, Alexander Heuck, Tim Clausen, and Claudia Jonak
- Arabidopsis* GROWTH-REGULATING FACTOR7 Functions as a Transcriptional Repressor of Abscisic Acid- and Osmotic Stress-Responsive Genes, Including *DREB2A*** [W](#) 3393
 June-Sik Kim, Junya Mizoi, Satoshi Kidokoro, Kyonoshin Maruyama, Jun Nakajima, Kazuo Nakashima, Nobutaka Mitsuda, Yuko Takiguchi, Masaru Ohme-Takagi, Youichi Kondou, Takeshi Yoshizumi, Minami Matsui, Kazuo Shinozaki, and Kazuko Yamaguchi-Shinozaki
- Lysin Motif-Containing Proteins LYP4 and LYP6 Play Dual Roles in Peptidoglycan and Chitin Perception in Rice Innate Immunity** [W](#) [OA](#) 3406
 Bing Liu, Jian-Feng Li, Ying Ao, Jinwang Qu, Zhangqun Li, Jianbin Su, Yang Zhang, Jun Liu, Dongru Feng, Kangbiao Qi, Yanming He, Jinfa Wang, and Hong-Bin Wang
- Host Protein BSL1 Associates with *Phytophthora infestans* RXLR Effector AVR2 and the *Solanum demissum* Immune Receptor R2 to Mediate Disease Resistance** [C](#) [W](#) 3420
 Diane G.O. Saunders, Susan Breen, Joe Win, Sebastian Schornack, Ingo Hein, Tolga O. Bozkurt, Nicolas Champouret, Vivianne G.A.A. Vleeshouwers, Paul R.J. Birch, Eleanor M. Gilroy, and Sophien Kamoun
- Ribulose-1,5-Bis-Phosphate Carboxylase/Oxygenase Accumulation Factor1 Is Required for Holoenzyme Assembly in Maize** [C](#) [W](#) 3435
 Leila Feiz, Rosalind Williams-Carrier, Katia Wostrickoff, Susan Belcher, Alice Barkan, and David B. Stern
- Opaque1* Encodes a Myosin XI Motor Protein That Is Required for Endoplasmic Reticulum Motility and Protein Body Formation in Maize Endosperm** [C](#) [W](#) [OA](#) 3447
 Guifeng Wang, Fang Wang, Gang Wang, Fei Wang, Xiaowei Zhang, Mingyu Zhong, Jin Zhang, Dianbin Lin, Yuanping Tang, Zhengkai Xu, and Rentao Song
- Selective Regulation of Maize Plasma Membrane Aquaporin Trafficking and Activity by the SNARE SYP121** [W](#) 3463
 Arnaud Besserer, Emeline Burnotte, Gerd Patrick Bienert, Adrien S. Chevalier, Abdelmounaim Errachid, Christopher Grefen, Michael R. Blatt, and François Chaumont

CORRECTIONS

3482

Yasuyuki Yamaji, Kensaku Maejima, Johji Ozeki, Ken Komatsu, Takuya Shiraishi, Yukari Okano, Misako Himeno, Kyoko Sugawara, Yutaro Neriya, Nami Minato, Chihiro Miura, Masayoshi Hashimoto, and Shigetou Namba (2012) Lectin-Mediated Resistance Impairs Plant Virus Infection at the Cellular Level. *Plant Cell* 24: 778–793.

Andrew J. Brueggeman, Dayananda S. Gangadharaiyah, Matyas F. Cserhati, David Casero, Donald P. Weeks, and Istvan Ladunga (2012) Activation of the Carbon Concentrating Mechanism by CO₂ Deprivation Coincides with Massive Transcriptional Restructuring in *Chlamydomonas reinhardtii*. *Plant Cell* 24: 1860–1875.

3483

☐ Some figures in this article are displayed in color online but in black and white in the print edition.

☐ Online version contains Web-only data.

☐ Open Access articles can be viewed online without a subscription.



© 2012 American Society of Plant Biologists. All rights reserved. Printed on acid-free paper effective with Volume 1, Number 1, January 1989. Printed in the United States of America.

The Plant Cell (ISSN 1040-4651, online ISSN 1532-298X) is published monthly (one volume per year) by the American Society of Plant Biologists, 15501 Monona Drive, Rockville, MD 20855-2768, and is produced by Dartmouth Journal Services, Waterbury, VT. The institutional price for the print and online versions is based on type of institution; contact institution@aspb.org. A subscription includes both *The Plant Cell* and *Plant Physiology*; single copies may be purchased for \$95 each, plus \$10 shipping (U.S.) or \$12 (outside U.S.). Members of the American Society of Plant Biologists may subscribe to *The Plant Cell* for \$240. Nonmember individuals may subscribe for \$375. For matters regarding subscriptions, contact Suzanne Cholwek, ASPB, 15501 Monona Drive, Rockville, MD 20855-2768; telephone 301/296-0926; fax 301/251-6740; e-mail scholwek@aspb.org. Notify ASPB in writing within 3 months (domestic) or 6 months (foreign) of issue date, and defective copies or copies lost in the mail will be replaced. Send all inquiries regarding display advertising to FASEB AdNet, 9650 Rockville Pike, Bethesda, MD 20814-3998; telephone 301/634-7791; fax 301/634-7153; e-mail adnet@faseb.org. Periodicals postage paid at Rockville, MD 20850, and at additional mailing offices.

Postmaster: Send address changes to *The Plant Cell*, American Society of Plant Biologists, 15501 Monona Drive, Rockville, MD 20855-2768. The online version of *The Plant Cell* is available at www.plantcell.org.

Permission to Reprint: Permission to make digital or hard copies of part or all of a work published in *The Plant Cell* is granted without fee for personal or classroom use provided that copies are not made or distributed for profit or commercial advantage and that copies bear the full citation and the following notice on the first page: "Copyright American Society of Plant Biologists." For all other kinds of copying, request permission in writing from Nancy A. Winchester, Publications Director, ASPB headquarters.

This information is current as of September 26, 2020

Permissions	https://www.copyright.com/ccc/openurl.do?sid=pd_hw1532298X&issn=1532298X&WT.mc_id=pd_hw1532298X
eTOCs	Sign up for eTOCs at: http://www.plantcell.org/cgi/alerts/ctmain
CiteTrack Alerts	Sign up for CiteTrack Alerts at: http://www.plantcell.org/cgi/alerts/ctmain
Subscription Information	Subscription Information for <i>The Plant Cell</i> and <i>Plant Physiology</i> is available at: http://www.aspb.org/publications/subscriptions.cfm