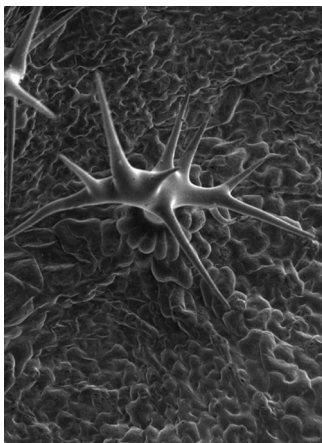


T H E
PLANT
C E L L

Volume 25 Number 5 May 2013

The electronic form of this issue, available at www.plantcell.org, is the journal of record.

ON THE COVER




Epidermal cells differentiate into various shapes. Trichomes and petal conical cells are formed by cell outgrowth regulated by MIXTA-like MYB transcription factors. Oshima et al. present evidence that two *Arabidopsis* MIXTA-like MYB transcription factors, MYB106 and MYB16, regulate cuticle development by inducing expression of cutin and wax biosynthetic genes. Expression of MYB106 chimeric repressor and knockout/down of *MYB106* and *MYB16* induced not only cell outgrowth abnormality but also organ adhesion, reduction of epicuticular wax crystal and cutin nanoridges. The cover shows a trichome of *MYB16-amiRNA myb106* knockout/down with many more branches and a much smoother cell surface without papillae.



IN BRIEF

- Frenemies: Antagonistic bHLH/bZIP Transcription Factors Integrate Light and Reactive Oxygen Species Signaling in *Arabidopsis*** 1483
Jennifer Lockhart
- Reconstruction of the *Brassica rapa* Ancestral Genome** 1484
Nancy R. Hofmann
- Deciphering the Role of CGI-58 in Lipid Metabolism in *Arabidopsis*** 1485
Kathleen L. Farquharson
- Chlorophyll Breakdown Branches Out: Identification of a Major Catabolic Route Involving Cytochrome P450 CYP89A9** 1486
Jennifer Mach
- Ribosomal Regulation of Mitochondrial Gene Expression** 1487
Nancy R. Hofmann


REVIEW

- Plant Immune Responses Against Viruses: How Does a Virus Cause Disease?**  1489
Kranthi K. Mandadi and Karen-Beth G. Scholthof

LARGE-SCALE BIOLOGY ARTICLES

- Comprehensive Protein-Based Artificial MicroRNA Screens for Effective Gene Silencing in Plants**  1507
Jian-Feng Li, Hoo Sun Chung, Yajie Niu, Jenifer Bush, Matthew McCormack, and Jen Sheen
- Advanced Proteomic Analyses Yield a Deep Catalog of Ubiquitylation Targets in *Arabidopsis***  1523
Do-Young Kim, Mark Scalf, Lloyd M. Smith, and Richard D. Vierstra

RESEARCH ARTICLES

- Deciphering the Diploid Ancestral Genome of the Mesohexaploid *Brassica rapa***  1541
Feng Cheng, Terezie Mandáková, Jian Wu, Qi Xie, Martin A. Lysak, and Xiaowu Wang

EDITORIAL BOARD

Editor in Chief

Cathie Martin

Coeditors

Sarah M. Assmann

Jody Banks

Sebastian Bednarek

James Birchler

Ulla Bonas

Christopher Bowler

Judy Callis

XiaoFeng Cao

Vincenzo De Luca

Xing Wang Deng

Xinnian Dong

Allan Downie

Alisdair Fernie

Pascal Genschik

Jean T. Greenberg

Thomas Guilfoyle

Herman R. Höfte

David Jackson

Regine Kahmann

Martin Kater

Daniel J. Kliebenstein

Patricia Leon

Clive Lloyd

William Lucas

Blake Meyers

Ortrun Mittelsten Scheid

Michael Palmgren

Markus Pauly

Scott C. Peck

Barry Pogson

Zhaohui Qin

Karin Schumacher

David Smyth

Chris J. Staiger

Keiko Sugimoto

Managing Editor

Patti Lockhart

Senior Features Editor

Nancy A. Eckardt

Features Editor

Mary Williams

Science Editors

Greg Bertoni

Kathleen L. Farquharson

Nancy R. Hofmann

Jennifer Lockhart

Jennifer M. Mach

Production Manager

Susan L. Entwistle

Manuscript Manager

Annette Kessler

Publications Director

Nancy A. Winchester

Publisher

American Society of

Plant Biologists

Executive Director,

Crispin Taylor

Editorial Office

15501 Monona Drive

Rockville, Maryland 20855-2768

Telephone: 301/296-0908

Fax: 301/279-2996

http://www.aspb.org

Online at www.plantcell.org


- MicroRNA Superfamilies Descended from miR390 and Their Roles in Secondary Small Interfering RNA Biogenesis in Eudicots** ^W 1555
Rui Xia, Blake C. Meyers, Zhongchi Liu, Eric P. Beers, Songqing Ye, and Zongrang Liu
- oiwa*, a Female Gametophytic Mutant Impaired in a Mitochondrial Manganese-Superoxide Dismutase, Reveals Crucial Roles for Reactive Oxygen Species during Embryo Sac Development and Fertilization in *Arabidopsis*** ^{CW} 1573
María Victoria Martin, Diego Fernando Fiol, Venkatesan Sundaresan, Eduardo Julián Zabaleta, and Gabriela Carolina Pagnussat
- Inactivation of Plasma Membrane-Localized CDPK-RELATED KINASE5 Decelerates PIN2 Exocytosis and Root Gravitropic Response in *Arabidopsis*** ^{CW} 1592
Gábor Rigó, Ferhan Ayaydin, Olaf Tietz, Laura Zsigmond, Hajnalka Kovács, Anikó Páy, Klaus Salchert, Zsuzsanna Darula, Katalin F. Medzihradzsky, László Szabados, Klaus Palme, Csaba Koncz, and Ágnes Cséplő
- MIXTA-Like Transcription Factors and WAX INDUCER1/SHINE1 Coordinately Regulate Cuticle Development in *Arabidopsis* and *Torenia fournieri*** ^{CW} 1609
Yoshimi Oshima, Masahito Shikata, Tomotsugu Koyama, Norihiro Ohtsubo, Nobutaka Mitsuda, and Masaru Ohme-Takagi
- Seed Architecture Shapes Embryo Metabolism in Oilseed Rape** ^{W CA} 1625
Ljudmilla Borisjuk, Thomas Neuberger, Jörg Schwender, Nicolas Heinzl, Stephanie Sunderhaus, Johannes Fuchs, Jordan O. Hay, Henning Tschiersch, Hans-Peter Braun, Peter Denolf, Bart Lambert, Peter M. Jakob, and Hardy Rolletschek
- A bHLH-Type Transcription Factor, ABA-INDUCIBLE BHLH-TYPE TRANSCRIPTION FACTOR/JA-ASSOCIATED MYC2-LIKE1, Acts as a Repressor to Negatively Regulate Jasmonate Signaling in *Arabidopsis*** ^{CW} 1641
Masaru Nakata, Nobutaka Mitsuda, Marco Herde, Abraham J.K. Koo, Javier E. Moreno, Kaoru Suzuki, Gregg A. Howe, and Masaru Ohme-Takagi
- Antagonistic Basic Helix-Loop-Helix/bZIP Transcription Factors Form Transcriptional Modules That Integrate Light and Reactive Oxygen Species Signaling in *Arabidopsis*** ^W 1657
Dongqin Chen, Gang Xu, Weijiang Tang, Yanjun Jing, Qiang Ji, Zhangjun Fei, and Rongcheng Lin
- D6PK AGCVIII Kinases Are Required for Auxin Transport and Phototropic Hypocotyl Bending in *Arabidopsis*** ^{CW} 1674
Björn C. Willige, Siv Ahlers, Melina Zourelidou, Inês C.R. Barbosa, Emilie Demarsy, Martine Trevisan, Philip A. Davis, M. Rob G. Roelfsema, Roger Hangarter, Christian Fankhauser, and Claus Schwechheimer
- Increased Expression of a Phloem Membrane Protein Encoded by *NHL26* Alters Phloem Export and Sugar Partitioning in *Arabidopsis*** ^{CW} 1689
Françoise Vilaine, Pavel Kerchev, Gilles Clément, Brigitte Batailler, Thibaud Cayla, Laurence Bill, Lionel Gissot, and Sylvie Dinant
- RICE SALT SENSITIVE3 Forms a Ternary Complex with JAZ and Class-C bHLH Factors and Regulates Jasmonate-Induced Gene Expression and Root Cell Elongation** ^{CW} 1709
Yosuke Toda, Maiko Tanaka, Daisuke Ogawa, Kyo Kurata, Ken-ichi Kurotani, Yoshiki Habu, Tsuyu Ando, Kazuhiko Sugimoto, Nobutaka Mitsuda, Etsuko Katoh, Kiyomi Abe, Akio Miyao, Hirohiko Hirochika, Tsukaho Hattori, and Shin Takeda


- The α/β Hydrolase CGI-58 and Peroxisomal Transport Protein PXA1 Coregulate Lipid Homeostasis and Signaling in *Arabidopsis*** [W](#) 1726
 Sunjung Park, Satinder K. Gidda, Christopher N. James, Patrick J. Horn, Nicholas Khuu, Damien C. Seay, Jantana Keereetaweep, Kent D. Chapman, Robert T. Mullen, and John M. Dyer
- Light-Regulated Hypocotyl Elongation Involves Proteasome-Dependent Degradation of the Microtubule Regulatory Protein WDL3 in *Arabidopsis*** [C](#)[W](#)[O](#)[A](#) 1740
 Xiaomin Liu, Tao Qin, Qianqian Ma, Jingbo Sun, Ziqiang Liu, Ming Yuan, and Tonglin Mao
- Golgi Traffic and Integrity Depend on N-Myristoyl Transferase-1 in *Arabidopsis*** [W](#) 1756
 Luciana Renna, Giovanni Stefano, Wojciech Majeran, Chiara Micalella, Thierry Meinel, Carmela Giglione, and Federica Brandizzi
- EXO70A1-Mediated Vesicle Trafficking Is Critical for Tracheary Element Development in *Arabidopsis*** [W](#)[O](#)[A](#) 1774
 Shipeng Li, Min Chen, Dali Yu, Shichao Ren, Shufeng Sun, Linde Liu, Tijs Ketelaar, Anne-Mie C. Emons, and Chun-Ming Liu
- Chloroplast Division Protein ARC3 Regulates Chloroplast FtsZ-Ring Assembly and Positioning in *Arabidopsis* through Interaction with FtsZ2** [C](#)[W](#) 1787
 Min Zhang, Aaron J. Schmitz, Deena K. Kadirjan-Kalbach, Allan D. TerBush, and Katherine W. Osteryoung
- Arabidopsis* Villins Promote Actin Turnover at Pollen Tube Tips and Facilitate the Construction of Actin Collars** [W](#) 1803
 Xiaolu Qu, Hua Zhang, Yurong Xie, Juan Wang, Naizhi Chen, and Shanjin Huang
- Loss of Plastoglobule Kinases ABC1K1 and ABC1K3 Causes Conditional Degreening, Modified Prenyl-Lipids, and Recruitment of the Jasmonic Acid Pathway** [W](#) 1818
 Peter K. Lundquist, Anton Poliakov, Lisa Giacomelli, Giulia Friso, Mason Appel, Ryan P. McQuinn, Stuart B. Krasnoff, Elden Rowland, Lalit Ponnala, Qi Sun, and Klaas J. van Wijk
- ABCC1, an ATP Binding Cassette Protein from Grape Berry, Transports Anthocyanidin 3-*O*-Glucosides** [W](#)[O](#)[A](#) 1840
 Rita Maria Francisco, Ana Regalado, Agnès Ageorges, Bo J. Burla, Barbara Bassin, Cornelia Eisenach, Olfa Zarrouk, Sandrine Vialet, Thérèse Marlin, Maria Manuela Chaves, Enrico Martinoia, and Réka Nagy
- Silencing of the Nuclear *RPS10* Gene Encoding Mitochondrial Ribosomal Protein Alters Translation in *Arabidopsis* Mitochondria** [W](#) 1855
 Malgorzata Kwasniak, Pawel Majewski, Renata Skibior, Aleksandra Adamowicz, Malgorzata Czarna, Elwira Sliwinska, and Hanna Janska
- Cytochrome P450 CYP89A9 Is Involved in the Formation of Major Chlorophyll Catabolites during Leaf Senescence in *Arabidopsis*** [W](#)[O](#)[A](#) 1868
 Bastien Christ, Iris Süssenbacher, Simone Moser, Nicole Bichsel, Aurelie Egert, Thomas Müller, Bernhard Kräutler, and Stefan Hörtensteiner
- Abnormal Glycosphingolipid Mannosylation Triggers Salicylic Acid-Mediated Responses in *Arabidopsis*** [W](#)[O](#)[A](#) 1881
 Jenny C. Mortimer, Xiaolan Yu, Sandra Albrecht, Francesca Sicilia, Mariela Huichalaf, Diego Ampuero, Louise V. Michaelson, Alex M. Murphy, Toshiro Matsunaga, Samantha Kurz, Elaine Stephens, Timothy C. Baldwin, Tadashi Ishii, Johnathan A. Napier, Andreas P.M. Weber, Michael G. Handford, and Paul Dupree

Deletion of a Tandem Gene Family in *Arabidopsis*: Increased MEKK2 Abundance Triggers Autoimmunity when the MEKK1-MKK1/2-MPK4 Signaling Cascade Is Disrupted 

1895

Shih-Heng Su, Susan M. Bush, Najia Zaman, Kelly Stecker,
Michael R. Sussman, and Patrick Krysan

 Some figures in this article are displayed in color online but in black and white in the print edition.

 Online version contains Web-only data.

 Open Access articles can be viewed online without a subscription.



© 2013 American Society of Plant Biologists. All rights reserved. Printed on acid-free paper effective with Volume 1, Number 1, January 1989. Printed in the United States of America.

The Plant Cell (ISSN 1040-4651, online ISSN 1532-298X) is published monthly (one volume per year) by the American Society of Plant Biologists, 15501 Monona Drive, Rockville, MD 20855-2768, and is produced by Dartmouth Journal Services, Waterbury, VT. The institutional price for the print and online versions is based on type of institution; contact institution@aspb.org. A subscription includes both *The Plant Cell* and *Plant Physiology*; single copies may be purchased for \$95 each, plus \$10 shipping (U.S.) or \$12 (outside U.S.). Members of the American Society of Plant Biologists may subscribe to *The Plant Cell* for \$185. Nonmember individuals may subscribe for \$375. For matters regarding subscriptions, contact Suzanne Cholwek, ASPB, 15501 Monona Drive, Rockville, MD 20855-2768; telephone 301/296-0926; fax 301/251-6740; e-mail scholwek@aspb.org. Notify ASPB in writing within 3 months (domestic) or 6 months (foreign) of issue date, and defective copies or copies lost in the mail will be replaced. Send all inquiries regarding display advertising to FASEB AdNet, 9650 Rockville Pike, Bethesda, MD 20814-3998; telephone 301/634-7791; fax 301/634-7153; e-mail adnet@faseb.org. Periodicals postage paid at Rockville, MD 20850, and at additional mailing offices.

Postmaster: Send address changes to *The Plant Cell*, American Society of Plant Biologists, 15501 Monona Drive, Rockville, MD 20855-2768. The online version of *The Plant Cell* is available at www.plantcell.org.

Permission to Reprint: Permission to make digital or hard copies of part or all of a work published in *The Plant Cell* is granted without fee for personal or classroom use provided that copies are not made or distributed for profit or commercial advantage and that copies bear the full citation and the following notice on the first page: "Copyright American Society of Plant Biologists." For all other kinds of copying, request permission in writing from Nancy A. Winchester, Publications Director, ASPB headquarters.

This information is current as of January 22, 2019

Permissions	https://www.copyright.com/ccc/openurl.do?sid=pd_hw1532298X&issn=1532298X&WT.mc_id=pd_hw1532298X
eTOCs	Sign up for eTOCs at: http://www.plantcell.org/cgi/alerts/ctmain
CiteTrack Alerts	Sign up for CiteTrack Alerts at: http://www.plantcell.org/cgi/alerts/ctmain
Subscription Information	Subscription Information for <i>The Plant Cell</i> and <i>Plant Physiology</i> is available at: http://www.aspb.org/publications/subscriptions.cfm