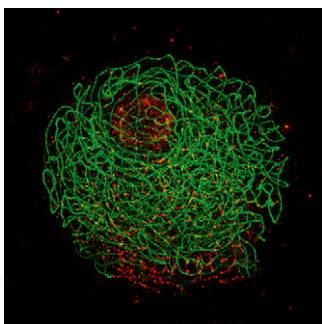


T H E
PLANT
C E L L

Volume 26 Number 2 February 2014

The electronic form of this issue, available at www.plantcell.org, is the journal of record.

ON THE COVER



During meiosis, physical connections between homologous chromosomes stabilize homolog pairing and the exchange of genetic information at crossovers. Barakate et al. (pages 729–740) show that the number of genetic crossovers during meiosis, and the potential for creating novel variation, is influenced by the synaptonemal complex protein ZYP1 in barley. The cover image shows initiation of synapsis in a barley meiocyte, when chromosomes are brought together at one side of the nucleus for homology recognition and pairing prior to full alignment and crossover formation. ASY1 (green) labels the axial element of the synaptonemal complex, a proteinaceous axis that is formed along pairs of sister chromatids. The ZYP1 protein (red) polymerizes to create the transverse filaments of the synaptonemal complex that “zips” homologous chromosomes together. The image was taken on the Dundee OMX super-resolution microscope.

IN BRIEF

No Scalpel Needed: Translatome of Pollen Tubes Growing within the Flower in *Arabidopsis* 517
Nancy Hofmann

True Love or Just a Surface Charge? FLOWERING LOCUS T Helps *Arabidopsis* Say It with Flowers 518
Jennifer Mach

Breaking “Bad” Proteins to Modulate Abscisic Acid Signaling 519
Jennifer Lockhart

LARGE-SCALE BIOLOGY ARTICLE

Machine Learning–Based Differential Network Analysis: A Study of Stress-Responsive Transcriptomes in *Arabidopsis* [W](#) 520
Chuang Ma, Mingming Xin, Kenneth A. Feldmann, and Xiangfeng Wang

RESEARCH ARTICLES

The BAF60 Subunit of the SWI/SNF Chromatin-Remodeling Complex Directly Controls the Formation of a Gene Loop at FLOWERING LOCUS C in *Arabidopsis* [W](#) 538
Teddy Jégu, David Latrasse, Marianne Delarue, Heribert Hirt, Séverine Domenichini, Federico Ariel, Martin Crespi, Catherine Bergounioux, Cécile Raynaud, and Moussa Benhamed

Structural Features Determining Flower-Promoting Activity of *Arabidopsis* FLOWERING LOCUS T [W](#) [I](#) [O](#) [P](#) [E](#) [N](#) 552
William Wing Ho Ho and Detlef Weigel

Photoperiodic Control of Carbon Distribution during the Floral Transition in *Arabidopsis* [C](#) [W](#) [I](#) [O](#) [P](#) [E](#) [N](#) 565
M. Isabel Ortiz-Marchena, Tomás Albi, Eva Lucas-Reina, Fatima E. Said, Francisco J. Romero-Campero, Beatriz Cano, M. Teresa Ruiz, José M. Romero, and Federico Valverde

Tomato GOLDEN2-LIKE Transcription Factors Reveal Molecular Gradients That Function during Fruit Development and Ripening [W](#) [I](#) [O](#) [P](#) [E](#) [N](#) 585
Cuong V. Nguyen, Julia T. Vrebalov, Nigel E. Gapper, Yi Zheng, Silin Zhong, Zhangjun Fei, and James J. Giovannoni

Profiling of Translatomes of in Vivo–Grown Pollen Tubes Reveals Genes with Roles in Micropylar Guidance during Pollination in *Arabidopsis* [W](#) [I](#) [O](#) [P](#) [E](#) [N](#) 602
Shih-Yun Lin, Pei-Wei Chen, Ming-Hsiang Chuang, Piyada Juntawong, Julia Bailey-Serres, and Guang-Yuh Jauh

EDITORIAL BOARD

Editor in Chief

Cathie Martin

Coeditors

Sarah M. Assmann

Jody Banks

Alice Barkan

Sebastian Bednarek

James Birchler

Ulla Bonas

Christopher Bowler

Judy Callis

XiaoFeng Cao

Vincenzo De Luca

Xing Wang Deng

Xinnian Dong

Allan Downie

Alisdair Fernie

Pascal Genschik

Jean T. Greenberg

Thomas Guilfoyle

Herman R. Höfte

David Jackson

Regine Kahmann

Martin Kater

Daniel J. Kliebenstein

William Lucas

Blake Meyers

Ortrun Mittelsten Scheid

Giles Oldroyd

Michael Palmgren

Markus Pauly

Scott C. Peck

Barry Pogson

Zhaohui Qin

Karin Schumacher

David Smyth

Chris J. Staiger

Keiko Sugimoto

Managing Editor

Patti Lockhart

Senior Features Editor

Nancy A. Eckardt

Features Editor

Mary Williams

Science Editors

Greg Bertoni

Kathleen L. Farquharson

Nancy R. Hofmann

Jennifer Lockhart

Jennifer M. Mach

Production Manager

Susan L. Entwistle

Manuscript Manager

Annette Kessler

Publications Director

Nancy A. Winchester

Publisher

American Society of
Plant Biologists

Executive Director,
Crispin Taylor

Editorial Office

15501 Monona Drive

Rockville, Maryland 20855-2768

Telephone: 301/296-0908

Fax: 301/279-2996

http://www.aspb.org

Online at www.plantcell.org

- Arabidopsis* DAYU/ABERRANT PEROXISOME MORPHOLOGY9 Is a Key Regulator of Peroxisome Biogenesis and Plays Critical Roles during Pollen Maturation and Germination in Planta** [W](#) 619
Xin-Ran Li, Hong-Ju Li, Li Yuan, Man Liu, Dong-Qiao Shi, Jie Liu, and Wei-Cai Yang
- A Pollen Coat–Inducible Autoinhibited Ca²⁺-ATPase Expressed in Stigmatic Papilla Cells Is Required for Compatible Pollination in the Brassicaceae** [W](#) 636
Megumi Iwano, Motoko Igarashi, Yoshiaki Tarutani, Pulla Kaothien-Nakayama, Hideki Nakayama, Hideki Moriyama, Ryo Yakabe, Tetsuyuki Entani, Hiroko Shimosato-Asano, Masao Ueki, Gen Tamiya, and Seiji Takayama
- STENOFOLIA Recruits TOPLESS to Repress *ASYMMETRIC LEAVES2* at the Leaf Margin and Promote Leaf Blade Outgrowth in *Medicago truncatula*** [C](#)[W](#) 650
Fei Zhang, Yewei Wang, Guifen Li, Yuhong Tang, Elena M. Kramer, and Million Tadege
- The Ubiquitin Receptor DA1 Regulates Seed and Organ Size by Modulating the Stability of the Ubiquitin-Specific Protease UBP15/SOD2 in *Arabidopsis*** [W](#) 665
Liang Du, Na Li, Liangliang Chen, Yingxiu Xu, Yu Li, Yueying Zhang, Chuanyou Li, and Yunhai Li
- Lotus japonicus* Cytokinin Receptors Work Partially Redundantly to Mediate Nodule Formation** [W](#)[OPEN](#) 678
Mark Held, Hongwei Hou, Mandana Miri, Christian Huynh, Loretta Ross, Md Shakhawat Hossain, Shusei Sato, Satoshi Tabata, Jillian Perry, Trevor L. Wang, and Krzysztof Szczyglowski
- ABD1 Is an *Arabidopsis* DCAF Substrate Receptor for CUL4-DDB1–Based E3 Ligases That Acts as a Negative Regulator of Abscisic Acid Signaling** [W](#) 695
Kyoung-In Seo, Jae-Hoon Lee, Cynthia D. Nezames, Shangwei Zhong, Eunyong Song, Myung-Ok Byun, and Xing Wang Deng
- Targeted Degradation of Abscisic Acid Receptors Is Mediated by the Ubiquitin Ligase Substrate Adaptor DDA1 in *Arabidopsis*** [W](#) 712
María Luisa Irigoyen, Elisa Iniesto, Lesia Rodriguez, María Isabel Puga, Yuki Yanagawa, Elah Pick, Elizabeth Strickland, Javier Paz-Ares, Ning Wei, Geert De Jaeger, Pedro L. Rodriguez, Xing Wang Deng, and Vicente Rubio
- The Synaptonemal Complex Protein ZYP1 Is Required for Imposition of Meiotic Crossovers in Barley** [W](#)[OPEN](#) 729
Abdellah Barakate, James D. Higgins, Sebastian Vivera, Jennifer Stephens, Ruth M. Perry, Luke Ramsay, Isabelle Colas, Helena Oakey, Robbie Waugh, F. Chris H. Franklin, Susan J. Armstrong, and Claire Halpin
- Analysis of Complementarity Requirements for Plant MicroRNA Targeting Using a *Nicotiana benthamiana* Quantitative Transient Assay** [W](#)[OPEN](#) 741
Qikun Liu, Feng Wang, and Michael J. Axtell
- Imaging of Endogenous Messenger RNA Splice Variants in Living Cells Reveals Nuclear Retention of Transcripts Inaccessible to Nonsense-Mediated Decay in *Arabidopsis*** [C](#)[W](#)[OPEN](#) 754
Janett Göhring, Jaroslaw Jacak, and Andrea Barta
- Synthetic Lethality in the Tobacco Plastid Ribosome and Its Rescue at Elevated Growth Temperatures** [W](#) 765
Miriam Ehrnthaler, Lars B. Scharff, Tobias T. Fleischmann, Claudia Hasse, Stephanie Ruf, and Ralph Bock
- RAP, the Sole Octotricopeptide Repeat Protein in *Arabidopsis*, Is Required for Chloroplast 16S rRNA Maturation** [W](#) 777
Laura Kleinknecht, Fei Wang, Roland Stübe, Katrin Philippar, Jörg Nickelsen, and Alexandra-Viola Bohne
- AUTOPHAGY-RELATED11 Plays a Critical Role in General Autophagy- and Senescence-Induced Mitophagy in *Arabidopsis*** [W](#) 788
Faqiang Li, Taijoon Chung, and Richard D. Vierstra
- SnRK1A-Interacting Negative Regulators Modulate the Nutrient Starvation Signaling Sensor SnRK1 in Source-Sink Communication in Cereal Seedlings under Abiotic Stress** [C](#)[W](#) 808
Chien-Ru Lin, Kuo-Wei Lee, Chih-Yu Chen, Ya-Fang Hong, Jyh-Long Chen, Chung-An Lu, Ku-Ting Chen, Tuan-Hua David Ho, and Su-May Yu

The bHLH Transcription Factor HBI1 Mediates the Trade-Off between Growth and Pathogen-Associated Molecular Pattern-Triggered Immunity in *Arabidopsis* ^{W|OPEN}

828

Min Fan, Ming-Yi Bai, Jung-Gun Kim, Tina Wang, Eunkyoo Oh, Lawrence Chen, Chan Ho Park, Seung-Hyun Son, Seong-Ki Kim, Mary Beth Mudgett, and Zhi-Yong Wang

^CSome figures in this article are displayed in color online but in black and white in the print edition.

^WOnline version contains Web-only data.

^OArticles can be viewed online without a subscription.



© 2014 American Society of Plant Biologists. All rights reserved. Printed on acid-free paper effective with Volume 1, Number 1, January 1989.

Printed in the United States of America.

The Plant Cell (ISSN 1040-4651, online ISSN 1532-298X) is published monthly (one volume per year) by the American Society of Plant Biologists, 15501 Monona Drive, Rockville, MD 20855-2768, and is produced by Dartmouth Journal Services, Waterbury, VT. The institutional price for the print and online versions is based on type of institution; contact institution@aspb.org. Single copies may be purchased for \$40 each, plus \$10 shipping (U.S.) or \$12 (outside U.S.). Members of the American Society of Plant Biologists may subscribe to *The Plant Cell* for \$240. Nonmember individuals may subscribe for \$500. Students may subscribe for \$165. For matters regarding subscriptions, contact Suzanne Cholwek, ASPB, 15501 Monona Drive, Rockville, MD 20855-2768; telephone 301/296-0926; fax 301/251-6740; e-mail scholwek@aspb.org. Notify ASPB in writing within 3 months (domestic) or 6 months (foreign) of issue date, and defective copies or copies lost in the mail will be replaced. Send all inquiries regarding display advertising to FASEB AdNet, 9650 Rockville Pike, Bethesda, MD 20814-3998; telephone 301/634-7791; fax 301/634-7153; e-mail adnet@faseb.org. Periodicals postage paid at Rockville, MD 20850, and at additional mailing offices.

Postmaster: Send address changes to *The Plant Cell*, American Society of Plant Biologists, 15501 Monona Drive, Rockville, MD 20855-2768. The online version of *The Plant Cell* is available at www.plantcell.org.

Permission to Reprint: Permission to make digital or hard copies of part or all of a work published in *The Plant Cell* is granted without fee for personal or classroom use provided that copies are not made or distributed for profit or commercial advantage and that copies bear the full citation and the following notice on the first page: "Copyright American Society of Plant Biologists." For all other kinds of copying, request permission in writing from Nancy A. Winchester, Publications Director, ASPB headquarters.

This information is current as of February 17, 2019

Permissions	https://www.copyright.com/ccc/openurl.do?sid=pd_hw1532298X&issn=1532298X&WT.mc_id=pd_hw1532298X
eTOCs	Sign up for eTOCs at: http://www.plantcell.org/cgi/alerts/ctmain
CiteTrack Alerts	Sign up for CiteTrack Alerts at: http://www.plantcell.org/cgi/alerts/ctmain
Subscription Information	Subscription Information for <i>The Plant Cell</i> and <i>Plant Physiology</i> is available at: http://www.aspb.org/publications/subscriptions.cfm