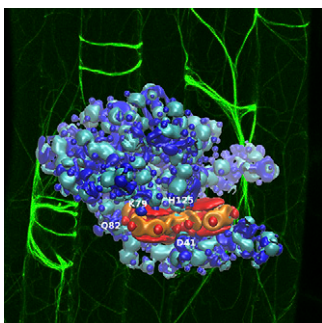


T H E  
**PLANT**  
C E L L

Volume 28 Number 4 April 2016

The electronic form of this issue, available at [www.plantcell.org](http://www.plantcell.org), is the journal of record.

**ON THE COVER**



Both polar auxin transport and vesicle cycling are inhibited by synthetic auxin transport inhibitors, such as 1-*N*-naphthylphthalamic acid (NPA); however, underlying targets and mechanisms are unclear. By using NMR and in silico docking, Zhu et al. (pages 930–948) mapped the NPA binding surface on the chaperone of an ABCB-type auxin transporter, TWISTED DWARF1 (TWD1), and identified ACTIN7 as a relevant TWD1 interactor. TWD1 determines downstream locations of auxin efflux transporters by adjusting actin filament debundling and dynamizing processes and mediates NPA action on the latter. The cover shows increased cortical actin bundling of hypocotyls upon NPA treatments visualized using the GFP-fABD2 actin marker (green fluorescence). Quantum chemical analysis of the electron density components identifies the NPA contact region (electronic density deformation for NPA in orange and red and for the amino acid residues in cyan and blue).

**IN BRIEF**

**How Plants Take the Bad with the Good: Conserved UV-B Perception and Signaling in *Chlamydomonas*** [OPEN](#) 825  
Jennifer Mach

**Special Delivery: A Crucial Protein That Transports Manganese to the Oxygen-Evolving Complex of Photosystem II** [OPEN](#) 826  
Jennifer Lockhart

**3D Visualization of Thylakoid Membrane Development** [OPEN](#) 827  
Gregory Bertoni

**LETTERS TO THE EDITOR**

**Interactions between Brassinosteroids and Gibberellins: Synthesis or Signaling?** [OPEN](#) 829  
John J. Ross and Laura J. Quittenden

**Reply: Brassinosteroid Regulates Gibberellin Synthesis to Promote Cell Elongation in Rice: Critical Comments on Ross and Quittenden's Letter** [OPEN](#) 833  
Hongning Tong and Chengcai Chu

**Reply: Interaction between Brassinosteroids and Gibberellins: Synthesis or Signaling? In *Arabidopsis*, Both!** [OPEN](#) 836  
Simon J. Unterholzner, Wilfried Rozhon, and Brigitte Poppenberger

## EDITORIAL BOARD

### Editor in Chief

Sabeeha Merchant

### Senior Editors

Sebastian Bednarek  
James Birchler  
George Coupland  
Pascal Genschik  
Jean Greenberg  
Joseph Kieber  
Daniel J. Kliebenstein  
Barry Pogson

### Reviewing Editors

Michael Axtell  
Magdalena Bezanilla  
Ralph Bock  
Siobhan Brady  
Robin Buell  
XiaoFeng Cao  
Clint Chapple  
Sean Cutler  
Dean Della Penna  
Xinnian Dong  
Herman R. Hofte  
Inwhan Hwang  
Regine Kahmann  
Ute Kraemer  
Barbara Kunkel  
J. Clark Lagarias  
Zach Lippman  
Tesyfaye Mengiste  
Blake Meyers  
Harvey Millar  
Ortrun Mittelsten Scheid  
Nathan Nelson  
Giles E. Oldroyd  
Naomi Ori  
Markus Pauly  
Scott Peck  
Eugenia (Jenny) Russinova  
Dale Sanders  
Karin Schumacher  
Keiko Sugimoto  
Tai-ping Sun  
Marja Timmermans  
Michael Udvardi  
Andreas Weber

### Guest Editors

Alice Barkan  
Judy Callis  
Kent Chapman  
Ram Dixit  
Alisdair Fernie  
Elizabeth Haswell  
Liwen Jiang  
Jim Leebens-Mack  
Yonghua Li-Beisson  
Damon Lisch  
Peter Nagy  
Erik Nielsen  
Michael Palmgren  
David Smyth  
Pam Soltis  
Dan Voytas  
Sam Zeeman  
Xiaoyu Zhang

### Consulting Editors

Volker Brendel  
Erin Connolly  
Oliver Jensen

## LARGE-SCALE BIOLOGY ARTICLE

**xGDBvm: A Web GUI-Driven Workflow for Annotating Eukaryotic Genomes in the Cloud** <sup>OPEN</sup> 840

Jon Duvick, Daniel S. Standage, Nirav Merchant, and Volker P. Brendel

## RESEARCH ARTICLES

**A Negative Feedback Loop between PHYTOCHROME INTERACTING FACTORS and HECATE Proteins Fine-Tunes Photomorphogenesis in Arabidopsis** 855

Ling Zhu, Ruijiao Xin, Qingyun Bu, Hui Shen, Jonathan Dang, and Enamul Huq

**Three-Dimensional Visualization of the Tubular-Lamellar Transformation of the Internal Plastid Membrane Network during Runner Bean Chloroplast Biogenesis** 875

Łucja Kowalewska, Radosław Mazur, Szymon Suski, Maciej Garstka, and Agnieszka Mostowska

**The Evolutionarily Conserved Protein PHOTOSYNTHESIS AFFECTED MUTANT71 Is Required for Efficient Manganese Uptake at the Thylakoid Membrane in Arabidopsis** 892

Anja Schneider, Iris Steinberger, Andrei Herdean, Chiara Gandini, Marion Eisenhut, Samantha Kurz, Anna Morper, Natalie Hoecker, Thilo Rühle, Mathias Labs, Ulf-Ingo Flügge, Stefan Geimer, Sidsel Birkelund Schmidt, Søren Husted, Andreas P.M. Weber, Cornelia Spetea, and Dario Leister

**Spontaneous Chloroplast Mutants Mostly Occur by Replication Slippage and Show a Biased Pattern in the Plastome of *Oenothera*** <sup>OPEN</sup> 911

Amid Massouh, Julia Schubert, Liliya Yaneva-Roder, Elena S. Ulbricht-Jones, Arkadiusz Zupok, Marc T.J. Johnson, Stephen I. Wright, Tommaso Pellizzer, Johanna Sobanski, Ralph Bock, and Stephan Greiner

**TWISTED DWARF1 Mediates the Action of Auxin Transport Inhibitors on Actin Cytoskeleton Dynamics** 930

Jinsheng Zhu, Aurelien Bailly, Marta Zwiewka, Valpuri Sovero, Martin Di Donato, Pei Ge, Jacqueline Oehri, Bibek Aryal, Pengchao Hao, Miriam Linnert, Noelia Inés Burgardt, Christian Lücke, Matthias Weiwad, Max Michel, Oliver H. Weiergräber, Stephan Pollmann, Elisa Azzarello, Stefano Mancuso, Noel Ferro, Yoichiro Fukao, Céline Hoffmann, Roland Wedlich-Söldner, Jiří Friml, Clément Thomas, and Markus Geisler

**S-Type Anion Channels SLAC1 and SLAH3 Function as Essential Negative Regulators of Inward K<sup>+</sup> Channels and Stomatal Opening in Arabidopsis** 949

An Zhang, Hui-Min Ren, Yan-Qiu Tan, Guo-Ning Qi, Fen-Yong Yao, Gui-Li Wu, Lu-Wen Yang, Jamshaid Hussain, Shu-Jing Sun, and Yong-Fei Wang

**UV-B Perception and Acclimation in *Chlamydomonas reinhardtii*** <sup>OPEN</sup> 966

Kimberley Tilbrook, Marine Dubois, Carlos D. Crocco, Ruohe Yin, Richard Chappuis, Guillaume Allorent, Emanuel Schmid-Siegert, Michel Goldschmidt-Clermont, and Roman Ulm

**Senior Features Editor**

Nancy A. Eckardt

**Features Editor**

Mary Williams

**Science Editors**

Greg Bertoni

Kathleen L. Farquharson

Nancy R. Hofmann

Jennifer Lockhart

Jennifer M. Mach

**Managing Editor**

Patti Lockhart

**Issue Manager**

Felicia Dadak

**Production Manager**

Susan L. Entwistle

**Manuscript Manager**

Annette Kessler

**Publications Director**

Nancy A. Winchester

**Publisher**

American Society of

Plant Biologists

Executive Director,

Crispin Taylor

**Editorial Office**

15501 Monona Drive

Rockville, Maryland 20855-2768

Telephone: 301/296-0908

Online at [www.plantcell.org](http://www.plantcell.org)**CORRECTIONS**

Kleinknecht, L., Wang, F., Stübe, R., Philippar, K., Nickelsen, J., and Bohne, A.-V. (2014). RAP, the sole octotricopeptide repeat protein in *Arabidopsis*, is required for chloroplast 16S rRNA maturation. *Plant Cell* 26: 777–787. [OPEN](#) **984**

Zou, J.-J., Li, X.-D., Ratnasekera, D., Wang, C., Liu, W.-X., Song, L.-F., Zhang, W.-Z., and Wu, W.-H. (2015). Arabidopsis CALCIUM-DEPENDENT PROTEIN KINASE8 and CATALASE3 function in abscisic acid-mediated signaling and H<sub>2</sub>O<sub>2</sub> homeostasis in stomatal guard cells under drought stress. *Plant Cell* 27: 1445–1460. [OPEN](#) **990**

[OPEN](#) Articles can be viewed without a subscription.



© 2016 American Society of Plant Biologists. All rights reserved.

---

**The Plant Cell** (eISSN 1532-298X) is published monthly (one volume per year) by the American Society of Plant Biologists, 15501 Monona Drive, Rockville, MD 20855-2768, and is produced by Dartmouth Journal Services, Waterbury, VT. The institutional subscription price is based on type of institution; contact [institution@aspb.org](mailto:institution@aspb.org). Members of the American Society of Plant Biologists may subscribe to *The Plant Cell* for \$240. Nonmember individuals may subscribe for \$500. Students may subscribe for \$165. For matters regarding subscriptions, contact Suzanne Cholwek, ASPB, 15501 Monona Drive, Rockville, MD 20855-2768; telephone 301/296-0926; fax 301/251-6740; e-mail [scholwek@aspb.org](mailto:scholwek@aspb.org). Send all inquiries regarding display advertising to FASEB AdNet, 9650 Rockville Pike, Bethesda, MD 20814-3998; telephone 301/634-7791; fax 301/634-7153; e-mail [adnet@faseb.org](mailto:adnet@faseb.org). The online version of *The Plant Cell* is available at [www.plantcell.org](http://www.plantcell.org).

**Permission to Reprint:** Permission to make digital or hard copies of part or all of a work published in *The Plant Cell* is granted without fee for personal or classroom use provided that copies are not made or distributed for profit or commercial advantage and that copies bear the full citation and the following notice on the first page: "Copyright American Society of Plant Biologists." For all other kinds of copying, request permission in writing from Nancy A. Winchester, Publications Director, ASPB headquarters.

This information is current as of October 26, 2020

<b>Permissions</b>	<a href="https://www.copyright.com/ccc/openurl.do?sid=pd_hw1532298X&amp;iissn=1532298X&amp;WT.mc_id=pd_hw1532298X">https://www.copyright.com/ccc/openurl.do?sid=pd_hw1532298X&amp;iissn=1532298X&amp;WT.mc_id=pd_hw1532298X</a>
<b>eTOCs</b>	Sign up for eTOCs at: <a href="http://www.plantcell.org/cgi/alerts/ctmain">http://www.plantcell.org/cgi/alerts/ctmain</a>
<b>CiteTrack Alerts</b>	Sign up for CiteTrack Alerts at: <a href="http://www.plantcell.org/cgi/alerts/ctmain">http://www.plantcell.org/cgi/alerts/ctmain</a>
<b>Subscription Information</b>	Subscription Information for <i>The Plant Cell</i> and <i>Plant Physiology</i> is available at: <a href="http://www.aspb.org/publications/subscriptions.cfm">http://www.aspb.org/publications/subscriptions.cfm</a>