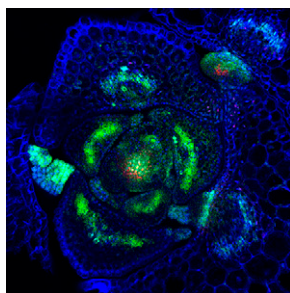


T H E
PLANT
C E L L

Volume 29 Number 6 June 2017

The electronic form of this issue, available at www.plantcell.org, is the journal of record.

ON THE COVER



Wang et al. (pages 1373–1387) show that cytokinin signaling activates de novo *WUSCHEL* expression in the Arabidopsis leaf axil, enabling axillary meristem initiation. This requires a permissive epigenetic environment and is directly activated by B-type ARABIDOPSIS RESPONSE REGULATOR transcription factors. The cover image shows localization of the cytokinin signaling reporter TCS (green) and *WUSCHEL* (red) in a transverse cross section of an Arabidopsis shoot apex.

IN BRIEF

- An Emerging Paradigm? RxLR Cleavage before Effector Secretion** [OPEN](#) 1177
Nancy R. Hofmann
- Technology Turbocharges Functional Genomics** [OPEN](#) 1179
C. Robin Buell and Daniel Voytas
- Secrets of the Forest: Volatiles First Discovered in Pine Trees Propagate Defense Signals within and between Plants** [OPEN](#) 1181
Kathleen L. Farquharson
- CONSTANS Companion: CO Binds the NF-YB/NF-YC Dimer and Confers Sequence-Specific DNA Binding** [OPEN](#) 1183
Jennifer Mach

BREAKTHROUGH REPORT

- The RxLR Motif of the Host Targeting Effector AVR3a of *Phytophthora infestans* Is Cleaved before Secretion** [OPEN](#) 1184
Stephan Wawra, Franziska Trusch, Anja Matena, Kostis Apostolakis, Uwe Linne, Igor Zhukov, Jan Stanek, Wiktor Koźmiński, Ian Davidson, Chris J. Secombes, Peter Bayer, and Pieter van West

LARGE-SCALE BIOLOGY ARTICLES

- A Multipurpose Toolkit to Enable Advanced Genome Engineering in Plants** [OPEN](#) 1196
Tomáš Čermák, Shaun J. Curtin, Javier Gil-Humanes, Radim Čegan, Thomas J.Y. Kono, Eva Konečná, Joseph J. Belanto, Colby G. Starker, Jade W. Mathre, Rebecca L. Greenstein, and Daniel F. Voytas
- The Sequences of 1504 Mutants in the Model Rice Variety Kitaake Facilitate Rapid Functional Genomic Studies** 1218
Guotian Li, Rashmi Jain, Mawsheng Chern, Nikki T. Pham, Joel A. Martin, Tong Wei, Wendy S. Schackwitz, Anna M. Lipzen, Phat Q. Duong, Kyle C. Jones, Liangrong Jiang, Deling Ruan, Diane Bauer, Yi Peng, Kerrie W. Barry, Jeremy Schmutz, and Pamela C. Ronald
- The Emergence, Evolution, and Diversification of the miR390-*TAS3-ARF* Pathway in Land Plants** 1232
Rui Xia, Jing Xu, and Blake C. Meyers

EDITORIAL BOARD

Editor in Chief

Sabeeha Merchant

Senior Editors

Sebastian Bednarek
James Birchler
Ralph Bock
George Coupland
Pascal Genschik
Jean Greenberg
Joseph Kieber
Daniel J. Kliebenstein
Blake Meyers

Reviewing Editors

Michael Axtell
Magdalena Bezanilla
Siobhan Brady
Robin Buell
Kent Chapman
Clint Chapple
Sean Cutler
Dean Della Penna
Elizabeth Haswell
Herman R. Hofte
Inwhan Hwang
Regine Kahmann
Ute Kraemer
Barbara Kunkel
J. Clark Lagarias
Jim Leebens-Mack
Zach Lippman
Tefaye Mengiste
Harvey Millar
Ortrun Mittelsten Scheid
Giles E. Oldroyd
Naomi Ori
Markus Pauly
Eugenia (Jenny) Russinova
Dale Sanders
Karin Schumacher
Keiko Sugimoto
Marja Timmermans
Michael Udvardi
Andreas Weber

Guest Editors

Alice Barkan
Andrea Barta
Judy Callis
XiaoFeng Cao
Katherine Denby
Ram Dixit
Xinnian Dong
Angela Falciatore
Brian Gregory
Rodrigo Gutierrez
Liwen Jiang
Thomas Juenger
Jinsheng Lai
Andrew Leakey
Yonghua Li-Beisson
Damon Lisch
Hongtao Liu
Peter Moffett
Peter Nagy
Erik Nielsen
Michael Palmgren
Barry Pogson
Marcela Rojas-Pierce
Hitoshi Sakakibura
Tai-ping Sun

Evolutionary Footprints Reveal Insights into Plant MicroRNA Biogenesis 1248

Uciel Chorostecki, Belen Moro, Arantxa M.L. Rojas,
Juan M. Debernardi, Arnaldo L. Schapire, Cedric Notredame,
and Javier F. Palatnik

Noncanonical Alternative Polyadenylation Contributes to Gene Regulation in Response to Hypoxia [OPEN](#) 1262

Laura de Lorenzo, Reed Sorenson, Julia Bailey-Serres,
and Arthur G. Hunt

Phylogenomic Synteny Network Analysis of MADS-Box Transcription Factor Genes Reveals Lineage-Specific Transpositions, Ancient Tandem Duplications, and Deep Positional Conservation [OPEN](#) 1278

Tao Zhao, Rens Holmer, Suzanne de Bruijn, Gerco C. Angenent,
Harrold A. van den Burg, and M. Eric Schranz

RESEARCH ARTICLES

Repression of miR156 by miR159 Regulates the Timing of the Juvenile-to-Adult Transition in Arabidopsis 1293

Changkui Guo, Yunmin Xu, Min Shi, Yongmin Lai, Xi Wu, Huasen Wang,
ZhuJun Zhu, R. Scott Poethig, and Gang Wu

Cellulose Synthesis and Cell Expansion Are Regulated by Different Mechanisms in Growing Arabidopsis Hypocotyls [OPEN](#) 1305

Alexander Ivakov, Anna Flis, Federico Apelt, Maximilian Fünfgeld,
Ulrike Scherer, Mark Stitt, Friedrich Kragler, Kris Vissenberg,
Staffan Persson, and Dmitry Suslov

The Jasmonate-Activated Transcription Factor MdMYC2 Regulates ETHYLENE RESPONSE FACTOR and Ethylene Biosynthetic Genes to Promote Ethylene Biosynthesis during Apple Fruit Ripening [OPEN](#) 1316

Tong Li, Yaxiu Xu, Lichao Zhang, Yinglin Ji, Dongmei Tan, Hui Yuan,
and Aide Wang

Carbonic Anhydrases Function in Anther Cell Differentiation Downstream of the Receptor-Like Kinase EMS1 1335

Jian Huang, Zhiyong Li, Gabriel Biener, Erhui Xiong, Shikha Malik,
Nathan Eaton, Catherine Z. Zhao, Valerica Raicu, Hongzhi Kong,
and Dazhong Zhao

Type-B ARABIDOPSIS RESPONSE REGULATORS Specify the Shoot Stem Cell Niche by Dual Regulation of WUSCHEL [OPEN](#) 1357

Wen Jing Meng, Zhi Juan Cheng, Ya Lin Sang, Miao Miao Zhang,
Xiao Fei Rong, Zhi Wei Wang, Ying Ying Tang, and Xian Sheng Zhang

Cytokinin Signaling Activates WUSCHEL Expression during Axillary Meristem Initiation [OPEN](#) 1373

Jin Wang, Caihuan Tian, Cui Zhang, Bihai Shi, Xiuwei Cao,
Tian-Qi Zhang, Zhong Zhao, Jia-Wei Wang, and Yuling Jiao

SH3 Domain-Containing Protein 2 Plays a Crucial Role at the Step of Membrane Tubulation during Cell Plate Formation 1388

Gyeongik Ahn, Hyeran Kim, Dae Heon Kim, Hong Hanh,
Youngdae Yoon, Indira Singaram, Kaveesha J. Wijesinghe,
Kristen A. Johnson, Xiaohong Zhuang, Zizhen Liang,
Robert V. Stahelin, Liwen Jiang, Wonhwa Cho, Byung-Ho Kang,
and Inhwan Hwang

The Deubiquitinating Enzymes UBP12 and UBP13 Positively Regulate MYC2 Levels in Jasmonate Responses 1406

Jin Seo Jeong, Choonkyun Jung, Jun Sung Seo, Ju-Kon Kim,
and Nam-Hai Chua

Arabidopsis WRKY46, WRKY54, and WRKY70 Transcription Factors Are Involved in Brassinosteroid-Regulated Plant Growth and Drought Responses 1425

Jiani Chen, Trevor M. Nolan, Huaxun Ye, Mingcai Zhang,
Hongning Tong, Peiyong Xin, Jinfang Chu, Chengcai Chu, Zhaohu Li,
and Yanhai Yin

Klaas van Wijk
Jeanmarie Verchot
Dan Voytas
Sam Zeeman
Xiaoyu Zhang

Consulting Editors

Volker Brendel
Erin Connolly
Oliver Jensen
Nathan Nelson
Scott Peck
Uwe Rascher
David Smyth
Pam Soltis
Frances-Andre Wollman

Senior Features Editor

Nancy A. Eckardt

Features Editor

Mary Williams

Science Editors

Greg Bertoni
Kathleen L. Farquharson
Nancy R. Hofmann
Jennifer Lockhart
Jennifer M. Mach

Managing Editor

Patti Lockhart

Issue Manager

Felicia Dadak

Production Manager

Susan L. Entwistle

Manuscript Manager

Annette Kessler

Publications Director

Nancy A. Winchester

Publisher

American Society of
Plant Biologists
Executive Director,
Crispin Taylor

Editorial Office

15501 Monona Drive
Rockville, Maryland 20855-2768
Telephone: 301/296-0908
Online at www.plantcell.org



© 2017 American Society of Plant Biologists. All rights reserved.

Monoterpenes Support Systemic Acquired Resistance within and between Plants 1440

Marlies Riedlmeier, Andrea Ghirardo, Marion Wenig, Claudia Knappe, Kerstin Koch, Elisabeth Georgii, Sanjukta Dey, Jane E. Parker, Jörg-Peter Schnitzler, and A. Corina Vlot

Interplay of Plasma Membrane and Vacuolar Ion Channels, Together with BAK1, Elicits Rapid Cytosolic Calcium Elevations in Arabidopsis during Aphid Feeding [OPEN](#) 1460

Thomas R. Vincent, Marieta Avramova, James Canham, Peter Higgins, Natasha Bilkey, Sam T. Mugford, Marco Pitino, Masatsugu Toyota, Simon Gilroy, Anthony J. Miller, Saskia A. Hogenhout, and Dale Sanders

A Regulatory Hierarchy of the Arabidopsis Branched-Chain Amino Acid Metabolic Network [OPEN](#) 1480

Anqi Xing and Robert L. Last

Coevolution of Domain Interactions in the Chloroplast TGD1, 2, 3 Lipid Transfer Complex Specific to Brassicaceae and Poaceae Plants 1500

Yang Yang, Agnieszka Zienkiewicz, Anastasiya Lavell, and Christoph Benning

CONSTANS Imparts DNA Sequence Specificity to the Histone Fold NF-YB/NF-YC Dimer [OPEN](#) 1516

Nerina Gnesutta, Roderick W. Kumimoto, Swadhin Swain, Matteo Chiara, Chamindika Siriwardana, David S. Horner, Ben F. Holt III, and Roberto Mantovani

Protection of Arabidopsis Blunt-Ended Telomeres Is Mediated by a Physical Association with the Ku Heterodimer [OPEN](#) 1533

Sona Valuchova, Jaroslav Fulnecek, Zbynek Prokop, Peggy Stolt-Bergner, Eliska Janouskova, Ctirad Hofr, and Karel Riha

[OPEN](#) Articles can be viewed without a subscription.

The Plant Cell (eISSN 1532-298X) is published monthly (one volume per year) by the American Society of Plant Biologists, 15501 Monona Drive, Rockville, MD 20855-2768, and is produced by The Sheridan Group, Waterbury, VT. For matters regarding library subscriptions, contact Suzanne Cholwek, ASPB, 15501 Monona Drive, Rockville, MD 20855-2768; telephone 301/296-0926; fax 301/251-6740; e-mail scholwek@aspb.org. Send all inquiries regarding advertising to FASEB AdNet, 9650 Rockville Pike, Bethesda, MD 20814-3998; telephone 301/634-7791; fax 301/634-7153; e-mail adnet@faseb.org. The online version of *The Plant Cell* is available at www.plantcell.org.

Permission to Reprint: Permission to make digital or hard copies of part or all of a work published in *The Plant Cell* is granted without fee for personal or classroom use provided that copies are not made or distributed for profit or commercial advantage and that copies bear the full citation and the following notice on the first page: "Copyright American Society of Plant Biologists." For all other kinds of copying, request permission in writing from Nancy A. Winchester, Publications Director, ASPB headquarters.

This information is current as of December 10, 2018

Permissions	https://www.copyright.com/ccc/openurl.do?sid=pd_hw1532298X&issn=1532298X&WT.mc_id=pd_hw1532298X
eTOCs	Sign up for eTOCs at: http://www.plantcell.org/cgi/alerts/ctmain
CiteTrack Alerts	Sign up for CiteTrack Alerts at: http://www.plantcell.org/cgi/alerts/ctmain
Subscription Information	Subscription Information for <i>The Plant Cell</i> and <i>Plant Physiology</i> is available at: http://www.aspb.org/publications/subscriptions.cfm