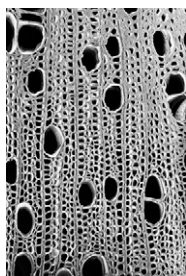


T H E
PLANT
C E L L

Volume 31 Number 3 March 2019

The electronic form of this issue, available at www.plantcell.org, is the journal of record.

ON THE COVER



Wood is a specialized tissue in forest tree species and plays a major role in sustaining our economy and ecosystem, but the genetic regulation underlying wood formation remains largely unknown. Integrating a series of transcriptome and transregulation analyses in wood forming cells and transgenic *Populus trichocarpa*, Chen et al. (pages 602–626) unravel a transcription factor (TF) PtrSND1-B1-mediated transcriptional regulatory network. PtrSND1-B1 mediates 57 TF-DNA and 9 TF-TF (protein-protein) interactions through 17 TFs in a 4-layer regulatory hierarchy for transregulating 27 effector genes for wood formation. All of these protein-protein interactions and 55 of the 57 TF-DNA interactions are newly discovered wood formation-specific interactions. The cover image shows a transverse section of stem wood from 6-month-old greenhouse-grown *P. trichocarpa*. Photo by Ilona Peszlen, North Carolina State University.

EDITOR PROFILE

Roger W. Innes^[OPEN] 555
Sonal Roy

IN BRIEF

tyRNA Bubbles: Extracellular Vesicles Carry 10–15-Nucleotide Small RNAs and Specific Groups of MicroRNAs^[OPEN] 558
Jennifer Mach

The AREB1-ADA2b-GCN5 Complex Regulates Gene Expression during Drought Stress^[OPEN] 559
Christian Danve M. Castroverde

It's an Uphill Battle: The MYB59-NPF7.3 Regulatory Module and its Role in Nutrient Transport^[OPEN] 561
Christian Danve M. Castroverde

LARGE-SCALE BIOLOGY ARTICLES

Evolutionary Origins of Pseudogenes and Their Association with Regulatory Sequences in Plants^[OPEN] 563
Jianbo Xie, Ying Li, Xiaomin Liu, Yiyang Zhao, Bailian Li, Pär K. Ingvarsson, and Deqiang Zhang

Regulation of Oxygenic Photosynthesis during Trophic Transitions in the Green Alga *Chromochloris zofingiensis*^[OPEN] 579
Melissa S. Roth, Sean D. Gallaher, Daniel J. Westcott, Masakazu Iwai, Katherine B. Louie, Maria Mueller, Andreas Walter, Fatima Foflonker, Benjamin P. Bowen, Nassim N. Ataii, Junha Song, Jian-Hua Chen, Crysten E. Blaby-Haas, Carolyn Larabell, Manfred Auer, Trent R. Northen, Sabeeha S. Merchant, and Krishna K. Niyogi

Hierarchical Transcription Factor and Chromatin Binding Network for Wood Formation in *Populus trichocarpa*^[OPEN] 602
Hao Chen, Jack P. Wang, Huizi Liu, Huiyu Li, Ying-Chung Jimmy Lin, Rui Shi, Chenmin Yang, Jinghui Gao, Chenguang Zhou, Quanzi Li, Ronald R. Sederoff, Wei Li, and Vincent L. Chiang

Editor in Chief
Sabeeha Merchant

Senior Features Editor
Nancy A. Eckardt

Features Editor
Mary Williams

Science Editors
Greg Bertoni
Kathleen L. Farquharson
Nancy R. Hofmann
Jennifer Lockhart
Jennifer M. Mach

Managing Editor
Jennifer A. Regala

Production Manager
Susan L. Entwistle

Manuscript Manager
Annette Kessler

Publications Director
Nancy A. Winchester

Publisher
American Society of
Plant Biologists
Executive Director,
Crispin Taylor

Editorial Office
15501 Monona Drive
Rockville, Maryland 20855-2768
Telephone: 301/296-0908

Online at www.plantcell.org

A Hybrid Approach Enabling Large-Scale Glycomic Analysis of Post-Golgi Vesicles Reveals a Transport Route for Polysaccharides^[OPEN] 627
Thomas Wilkop, Sivakumar Pattathil, Guangxi Ren, Destiny J. Davis, Wenlong Bao, Dechao Duan, Angelo G. Peralta, David S. Domozych, Michael G. Hahn, and Georgia Drakakaki

RESEARCH ARTICLES

Historical Meiotic Crossover Hotspots Fueled Patterns of Evolutionary Divergence in Rice 645
Alexandre P. Marand, Hainan Zhao, Wenli Zhang, Zixian Zeng, Chao Fang, and Jiming Jiang

The AREB1 Transcription Factor Influences Histone Acetylation to Regulate Drought Responses and Tolerance in *Populus trichocarpa*^[OPEN] 663
Shuang Li, Ying-Chung Jimmy Lin, Pengyu Wang, Baofeng Zhang, Meng Li, Su Chen, Rui Shi, Sermsawat Tunlaya-Anukit, Xinying Liu, Zhifeng Wang, Xiufang Dai, Jing Yu, Chenguang Zhou, Baoguang Liu, Jack P. Wang, Vincent L. Chiang, and Wei Li

Molecular Dissection of Early Defense Signaling Underlying Volatile-Mediated Defense Regulation and Herbivore Resistance in Rice^[OPEN] 687
Meng Ye, Gaétan Glauser, Yonggen Lou, Matthias Erb, and Lingfei Hu

The Transcription Factor MYB59 Regulates K⁺/NO₃⁻ Translocation in the Arabidopsis Response to Low K⁺ Stress^[OPEN] 699
Xin-Qiao Du, Feng-Liu Wang, Hong Li, Si Jing, Miao Yu, Jigang Li, Wei-Hua Wu, Jörg Kudla, and Yi Wang

RNA Binding Motif Protein 48 Is Required for U12 Splicing and Maize Endosperm Differentiation 715
Fang Bai, Jacob Corll, Donya N. Shodja, Ruth Davenport, Guanqiao Feng, Janaki Mudunkothge, Christian J. Brigolin, Federico Martin, Gertraud Spielbauer, Chi-Wah Tseung, Amy E. Siebert, W. Brad Barbazuk, Shailesh Lal, and A. Mark Settles

AMP and GMP Catabolism in Arabidopsis Converge on Xanthosine, Which Is Degraded by a Nucleoside Hydrolase Heterocomplex 734
Chiara Baccolini and Claus-Peter Witte

^[OPEN] Articles can be viewed without a subscription.



The Plant Cell (eISSN 1532-298X) is published monthly (one volume per year) by the American Society of Plant Biologists, 15501 Monona Drive, Rockville, MD 20855-2768, and is produced by Dartmouth Journal Services, Waterbury, VT. The institutional subscription price is based on type of institution; contact institution@aspb.org. Members of the American Society of Plant Biologists may subscribe to *The Plant Cell* for \$240. Nonmember individuals may subscribe for \$500. Students may subscribe for \$165. For matters regarding subscriptions, contact Suzanne Cholwek, ASPB, 15501 Monona Drive, Rockville, MD 20855-2768; telephone 301/296-0926; fax 301/251-6740; e-mail scholwek@aspb.org. Send all inquiries regarding display advertising to FASEB AdNet, 9650 Rockville Pike, Bethesda, MD 20814-3998; telephone 301/634-7791; fax 301/634-7153; e-mail adnet@faseb.org. The online version of *The Plant Cell* is available at www.plantcell.org.

Permission to Reprint: Permission to make digital or hard copies of part or all of a work published in *The Plant Cell* is granted without fee for personal or classroom use provided that copies are not made or distributed for profit or commercial advantage and that copies bear the full citation and the following notice on the first page: "Copyright American Society of Plant Biologists." For all other kinds of copying, request permission in writing from Nancy A. Winchester, Publications Director, ASPB headquarters.

This information is current as of November 28, 2020

Permissions	https://www.copyright.com/ccc/openurl.do?sid=pd_hw1532298X&issn=1532298X&WT.mc_id=pd_hw1532298X
eTOCs	Sign up for eTOCs at: http://www.plantcell.org/cgi/alerts/ctmain
CiteTrack Alerts	Sign up for CiteTrack Alerts at: http://www.plantcell.org/cgi/alerts/ctmain
Subscription Information	Subscription Information for <i>The Plant Cell</i> and <i>Plant Physiology</i> is available at: http://www.aspb.org/publications/subscriptions.cfm