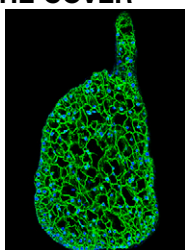


T H E
PLANT
C E L L

Volume 31 Number 6 June 2019

The electronic form of this issue, available at www.plantcell.org, is the journal of record.

ON THE COVER



Maize endosperm development at 4 DAP. At 4 DAP, cellularization is complete and early mitotic divisions begin. Early mitotic divisions are a critical step to determine maize kernel size. Huang, et al. (pp.1238–1256) cloned the *varied kernel size (vks1)* gene, which encodes ZmKIN11, a kinesin-14 motor protein. ZmKIN11 is essential for early endosperm development by regulating mitosis and cytokinesis.

EDITORIAL

- Reflections on *The Plant Cell Classics***^[OPEN] 1185
Sabeeha S. Merchant, Mary Williams, and Nancy A. Eckardt
- EDITORIALS: REFLECTIONS ON *THE PLANT CELL CLASSICS***
- Genomic Balance Plays Out in Evolution**^[OPEN] 1186
James A. Birchler
- Auxin-Mediated Cell Cycle Activation during Early Lateral Root Initiation**^[OPEN] 1188
Siobhan M. Brady
- FLOWERING LOCUS C* Isolation and Characterization: Two Articles That Opened Many Doors**^[OPEN] 1190
George Coupland
- Genes Directing Flower Development in *Arabidopsis***^[OPEN] 1192
Liz Dennis and Jim Peacock
- The Discovery of Plant D-Type Cyclins**^[OPEN] 1194
Lieven De Veylder
- DREB Duo Defines Distinct Drought and Cold Response Pathways**^[OPEN] 1196
Nancy A. Eckardt
- Auspicious Beginnings for the Defense Hormone Jasmonate**^[OPEN] 1198
Gregg A. Howe
- Reverse Genetics of *IRT1*, or How to Catch an Iron Transporter and Pin It Down**^[OPEN] 1200
Patrice A. Salomé
- Identification of *cup-shaped cotyledon*: New Ways to Think about Organ Initiation**^[OPEN] 1202
Sarah Hake
- Flor-iculture: Ellis and Dodds' Illumination of Gene-for-Gene Biology**^[OPEN] 1204
Jonathan D.G. Jones

Editor in Chief
Sabeeha Merchant

Senior Features Editor
Nancy A. Eckardt

Features Editor
Mary Williams

Science Editors
Greg Bertoni
Kathleen L. Farquharson
Nancy R. Hofmann
Jennifer Lockhart
Jennifer M. Mach

Managing Editor
Jennifer A. Regala

Production Manager
Susan L. Entwistle

Manuscript Manager
Annette Kessler

Publications Director
Nancy A. Winchester

Publisher
American Society of
Plant Biologists
Executive Director,
Crispin Taylor

Editorial Office
15501 Monona Drive
Rockville, Maryland 20855-2768
Telephone: 301/296-0908

Online at www.plantcell.org

MicroRNAs in Plants: Key Findings from the Early Years^[OPEN] 1206
Blake C. Meyers and Michael J. Axtell

Illuminating (White and) Purple Patches^[OPEN] 1208
Ortrun Mittelsten Scheid

Dissecting the Biological Functions of ARF and Aux/IAA Genes^[OPEN] 1210
Naomi Ori

All in the Family: The First Whole-Genome Survey of NLR Genes^[OPEN] 1212
Detlef Weigel

IN BRIEF

Six Days, Seven Nights: The Transcriptional Speed of Seed Development^[OPEN] 1214
Alex Harkess

Too Close to the Flame: Duplicated *ICARUS* Genes and Growth at Higher Temperatures^[OPEN] 1216
Patrice A. Salomé

Letting Sleeping DOGs Lie: Regulation of *DOG1* during Seed Dormancy^[OPEN] 1218
Emily Breeze

A Growing Reputation for *FRUITFULL* Genes^[OPEN] 1220
Diarmuid S. Ó'Maoiléidigh

RESEARCH ARTICLES

Genetic Interactions and Molecular Evolution of the Duplicated Genes *ICARUS2* and *ICARUS1* Help Arabidopsis Plants Adapt to Different Ambient Temperatures 1222
Belén Méndez-Vigo, Israel Ausín, Wangsheng Zhu, Almudena Mollá-Morales, Sureshkumar Balasubramanian, and Carlos Alonso-Blanco

Maize VKS1 Regulates Mitosis and Cytokinesis During Early Endosperm Development^[CC-BY] 1238
Yongcai Huang, Haihai Wang, Xing Huang, Qiong Wang, Jiechen Wang, Dong An, Jiqin Li, Wenqin Wang, and Yongrui Wu

OsSPL3, an SBP-Domain Protein, Regulates Crown Root Development in Rice^[OPEN] 1257
Yanlin Shao, Hong-Zhu Zhou, Yunrong Wu, Hui Zhang, Jian Lin, Xiaoyan Jiang, Qiuju He, Jianshu Zhu, Yong Li, Hao Yu, and Chuanzao Mao

Basic LEUCINE ZIPPER TRANSCRIPTION FACTOR67 Transactivates *DELAY OF GERMINATION1* to Establish Primary Seed Dormancy in Arabidopsis^[OPEN] 1276
Fiona M. Bryant, David Hughes, Keywan Hassani-Pak, and Peter J. Eastmond

A Functional Allele of *CsFUL1* Regulates Fruit Length through Repressing *CsSUP* and Inhibiting Auxin Transport in Cucumber 1289
Jianyu Zhao, Li Jiang, Gen Che, Yupeng Pan, Yanqiang Li, Yu Hou, Wensheng Zhao, Yanting Zhong, Lian Ding, Shuangshuang Yan, Chengzhen Sun, Renyi Liu, Liying Yan, Tao Wu, Xuexian Li, Yiqun Weng, and Xiaolan Zhang

An RNA Chaperone-Like Protein Plays Critical Roles in Chloroplast mRNA Stability and Translation in Arabidopsis and Maize 1308
Jingjing Jiang, Xin Chai, Nikolay Manavski, Rosalind Williams-Carrier, Baoye He, Andreas Brachmann, Daili Ji, Min Ouyang, Yini Liu, Alice Barkan, Jörg Meurer, Lixin Zhang, and Wei Chi

- A Subsidiary Cell-Localized Glucose Transporter Promotes Stomatal Conductance and Photosynthesis** 1328
 Hai Wang, Shijuan Yan, Hongjia Xin, Wenjie Huang, Hao Zhang, Shouzhen Teng, Ya-Chi Yu, Alisdair R. Fernie, Xiaoduo Lu, Pengcheng Li, Shengyan Li, Chunyi Zhang, Yong-Ling Ruan, Li-Qing Chen, and Zhihong Lang
- Cytochrome b_5 Is an Obligate Electron Shuttle Protein for Syringyl Lignin Biosynthesis in Arabidopsis**^[OPEN] 1344
 Mingyue Gou, Xiaoman Yang, Yunjun Zhao, Xiuzhi Ran, Yanzhai Song, and Chang-Jun Liu
- The Ca^{2+} Sensor ScaBP3/CBL7 Modulates Plasma Membrane H^+ -ATPase Activity and Promotes Alkali Tolerance in Arabidopsis** 1367
 Yongqing Yang, Yujiao Wu, Liang Ma, Zhijia Yang, Qiuyan Dong, Qinpei Li, Xuping Ni, Jörg Kudla, ChunPeng Song, and Yan Guo
- CORRECTION**^[OPEN] 1385
 Urzica, E.I., Casero, D., Yamasaki, H., Hsieh, S.I., Adler, L.N., Karpowicz, S.J., Blaby-Haas, C.E., Clarke, S.G., Loo, J.A., Pellegrini, M., and Merchant, S.S. (2012). Systems and trans-system level analysis identifies conserved iron deficiency responses in the plant lineage. *Plant Cell* 24: 3921–3948 (DOI: <https://doi.org/10.1105/tpc.112.102491>).
- CORRECTION**^[OPEN] 1386
 Capron, A., Serralbo, O., Fülöp, K., Frugier, F., Parmentier, Y., Dong, A., Lecureuil, A., Guerche, P., Kondorosi, E., Scheres, B., and Genschik, P. (2012). The Arabidopsis Anaphase-Promoting Complex or Cyclosome: Molecular and Genetic Characterization of the APC2 Subunit. *Plant Cell* 15: 2370–2382 (DOI: <https://doi.org/10.1105/tpc.013847>).

^[OPEN] Articles can be viewed without a subscription.

^[CC-BY] Article free via Creative Commons CC-BY 4.0 license.



The Plant Cell (eISSN 1532-298X) is published monthly (one volume per year) by the American Society of Plant Biologists, 15501 Monona Drive, Rockville, MD 20855-2768, and is produced by Dartmouth Journal Services, Waterbury, VT. The institutional subscription price is based on type of institution; contact institution@aspb.org. Members of the American Society of Plant Biologists may subscribe to *The Plant Cell* for \$240. Nonmember individuals may subscribe for \$500. Students may subscribe for \$165. For matters regarding subscriptions, contact Suzanne Cholwek, ASPB, 15501 Monona Drive, Rockville, MD 20855-2768; telephone 301/296-0926; fax 301/251-6740; e-mail scholwek@aspb.org. Send all inquiries regarding display advertising to FASEB AdNet, 9650 Rockville Pike, Bethesda, MD 20814-3998; telephone 301/634-7791; fax 301/634-7153; e-mail adnet@faseb.org. The online version of *The Plant Cell* is available at www.plantcell.org.

Permission to Reprint: Permission to make digital or hard copies of part or all of a work published in *The Plant Cell* is granted without fee for personal or classroom use provided that copies are not made or distributed for profit or commercial advantage and that copies bear the full citation and the following notice on the first page: "Copyright American Society of Plant Biologists." For all other kinds of copying, request permission in writing from Nancy A. Winchester, Publications Director, ASPB headquarters.

This information is current as of October 23, 2019

Permissions	https://www.copyright.com/ccc/openurl.do?sid=pd_hw1532298X&issn=1532298X&WT.mc_id=pd_hw1532298X
eTOCs	Sign up for eTOCs at: http://www.plantcell.org/cgi/alerts/ctmain
CiteTrack Alerts	Sign up for CiteTrack Alerts at: http://www.plantcell.org/cgi/alerts/ctmain
Subscription Information	Subscription Information for <i>The Plant Cell</i> and <i>Plant Physiology</i> is available at: http://www.aspb.org/publications/subscriptions.cfm